

LEA Name : York City SD  
Address : 31 N Pershing Avenue  
York, PA 17401

County : York  
AUN Number : 112679002  
LEA Type : SD

## Annual Financial Report Accuracy Certification Statement

For Fiscal Year Ending

**6/30/2020**

Pennsylvania Department of Education

&

Office of Comptroller Operations

PDE-2056: Intermediate Unit

PDE-2057: School District, AVTS/CTC, Charter School,  
and Special Program Jointure

**CERTIFICATION: By signing this page I agree that the electronic data submitted is a complete and accurate statement of the financial operations and status of the local education agency for the fiscal year. It has been prepared in accordance with generally accepted accounting principles and established Commonwealth of PA reporting guidelines.**

Andrea Berry  
Chief School Administrator Signature

Date 11/19/2020

Lori A. Ferrell  
Board Secretary Signature

Date 11-19-2020

SHAWN HAIN

Contact Person

hainsha@ycs.k12.pa.us

Contact Person E-mail Address

(717)849-1258 Ext :

Contact Person Telephone Number

(717)849-1394

Contact Person Fax Number

**Audit Certification**  
**Annual Financial Report:**  
For Fiscal Year Ending **6/30/2020**  
**(Pursuant to PA School Code Section 218(b))**

LEA Name : York City SD  
AUN Number : 112679002  
County : York

<b>Audit Certification Due:</b> 12/31/2020
---

This certification is applicable to the Annual Financial Report data submitted through the Consolidated Financial Reporting System (CFRS).

CERTIFICATION: By signing this page I agree that the financial statements of the school have been properly audited as noted above pursuant to Article XXIV, and in the auditor's professional opinion, the Annual Financial Report (PDE-2057) submitted through CFRS is materially consistent with the audited financial statements.

Chief School Administrator

Andrea Berry  
Signature

Date

11/19/2020

Board Secretary

Lari A. Kennel  
Signature

Date

11-19-20

SHAWN HAIN

Contact Person

hainsha@ycs.k12.pa.us

Contact Person E-mail Address

(717)849-1258

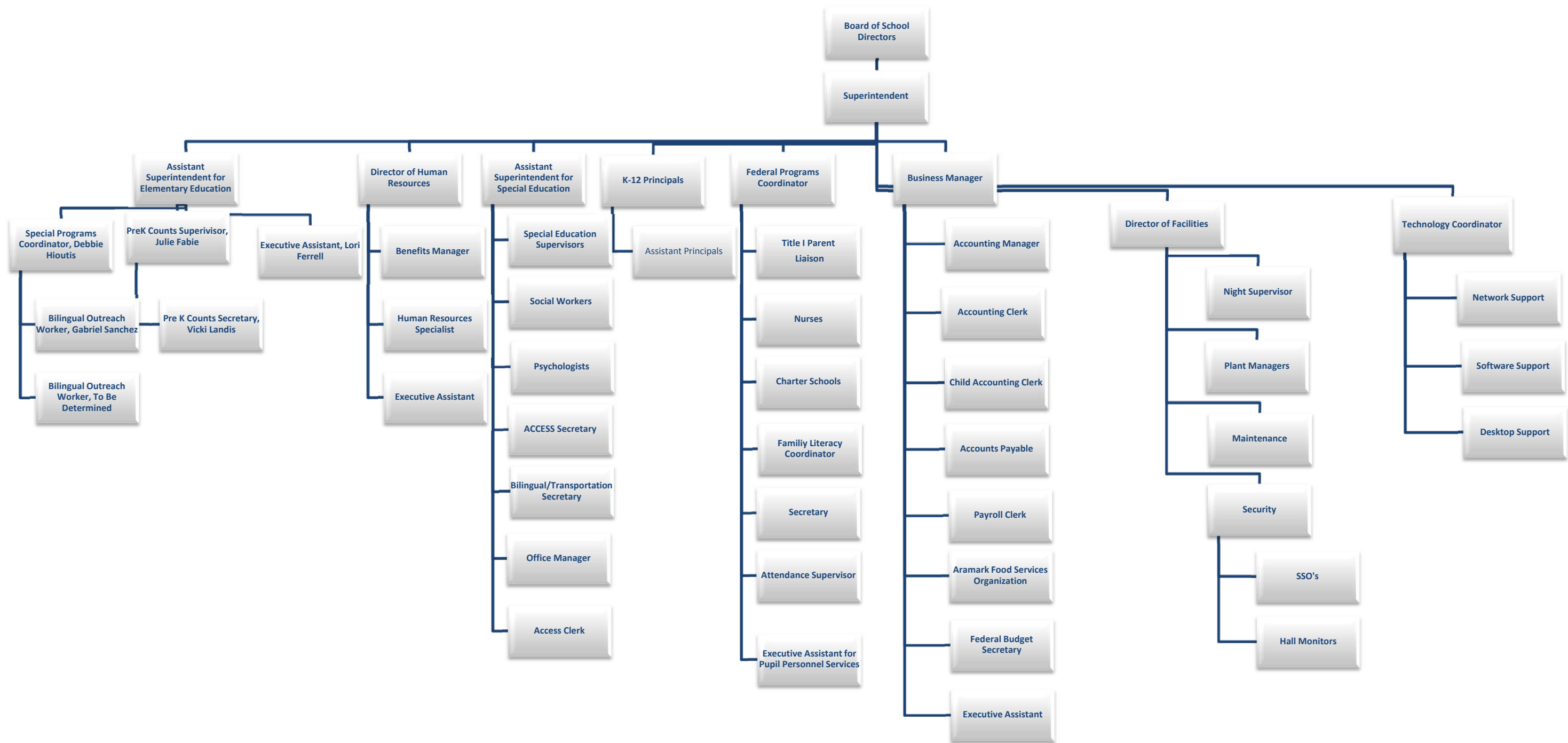
Ext :

Contact Person Telephone Number

(717)849-1394

Contact Person Fax Number

# Organizational Chart – School District of the City of York (York, PA)





Book	Policy Manual
Section	600 Finances
Title	GASB Statement 34
Code	622
Status	Active
Legal	1. 24 P.S. 613 2. 24 P.S. 218
Adopted	June 20, 2007

### **Purpose**

The Board recognizes the need to implement the required accounting and financial reporting standards stipulated by the Pennsylvania Department of Education.[1]

The primary objectives of implementing the GASB Statement 34 are to assure compliance with state requirements, and properly account for both the financial and economic resources of the district.

### **Authority**

Participation of the school district in any such activity shall be in accordance with Board policy.[2]

### **Delegation of Responsibility**

The responsibility to coordinate the compilation and preparation of all information necessary to implement this policy is delegated to the Business Manager.

The designated individual shall be responsible for implementing the necessary procedures to establish and maintain a fixed asset inventory, including depreciation schedules. Depreciation shall be computed on a straight-line basis over the useful lives of the assets. Normal maintenance and repairs shall be charged to expense as incurred; major renewals and betterments that materially extend the life or increase the value of the asset shall be capitalized. A schedule of accumulated depreciation shall be consistent from year to year.

The Business Manager shall prepare the required Management Discussion and Analysis (MD&A). The MD&A shall be in the form required by GASB Statement 34 and shall be submitted to the Board for approval, prior to publication.

Prior to submission of the MD&A for Board approval, the district's independent auditors shall review the MD&A, in accordance with SAS No. 52, "Required Supplementary Information".

### **Guidelines**

The dollar value of any single item for inclusion in the fixed assets accounts shall be not less than \$4,000 for all funds.

The assets listed below do not normally individually meet capitalization threshold criteria:

1. Library books.
2. Classroom texts.
3. Computer equipment.
4. Classroom furniture.

These asset category costs shall be capitalized and depreciated as groups when that group's acquisition cost exceeds the capitalization threshold in any given fiscal year.

For group asset depreciation purposes, the estimated useful life of the group may be based on an assessment of the life of the group as a whole. The initial year of a group asset should be considered the first full year of depreciation. Periodically, the district shall review the estimated life of groups of assets and adjust the remaining depreciation life of the group.

Depreciation and useful life shall be based on applicable IRS guidelines.

The useful life of textbooks shall be based on the district's textbook purchasing schedule.

Assets that fall below the capitalization threshold for GASB 34 reporting purposes may still be significant for insurance, warranty service, and obsolescence/ replacement policy tracking purposes. The district may record and maintain these non-GASB 34 asset inventories in subsidiary ledgers.

<u>Val Number</u>	<u>Description</u>	<u>Justification</u>
30391	Revenue Detail: AFR amount must equal PDE FAI System amount.  7111, AFR Rev Detail: \$70,203,315.17 7111, PDE FAI System: \$70,203,199.84	A credit of (\$115.33) was received with the 08/29/19 BEF and booked with FY19-20 revenue.
30501	Revenue Detail: AFR amount must equal PDE FAI system amount.  7311, AFR Rev Detail: \$459,754.43 7311, PDE FAI System: \$2,408,747.08	IU#12 "overbilled" the transportation subsidy deduction for FY18-19; as a result, the refund of \$1,948,992.65 received on 10/31/19 was accrued back to FY18-19, therefore creating a debit to FY19-20.
30685	Revenue Detail: Current Tax Revenue amount cannot exceed 50% variance from prior year amount. Correct the data or enter a justification.  6153, Current AFR Rev Detail: \$609,854.37 6153, Prior AFR Rev Detail: \$404,572.36	In FY19-20, there was an increased amount of real estate sales, thereby increasing the real estate transfer tax revenue.
42420	Expenditure Detail: Total current year 2700-513 expenditure varies from prior year by 10%. Correct the data or enter a justification.  2700-513, AFR Exp Detail: \$288,553.21 2700-513, PY AFR Amount: \$343,159.50	In FY19-20, there was a decreased amount of transportation costs, thereby decreasing the transportation expenditures.

LEA : 112679002     York City SD

Printed 11/20/2020 9:05:11 AM

Amounts Expressed in Whole Dollars		<u>General Fund</u> <u>(10)</u>	<u>Student Sponsored</u> <u>Activity Fund</u> <u>(21)</u>	<u>Public Purpose Trust</u> <u>(27)</u>	<u>Other Compt Approved</u> <u>(28)</u>	<u>Athletic / Activity</u> <u>(29)</u>
<b>Assets And Deferred Outflows Of Resources</b>						
<b>Assets</b>						
0100	Cash and Cash Equivalents	18,515,535				
0110	Investments					
0120	Taxes Receivable	5,193,702				
0130	Due From Other Funds	262,323				
0141	Due From Other Governments	1,713,576				
0142	State Revenue Receivable	5,334,518				
0143	Federal Revenue Receivable	1,190,603				
0145	Other Intergovernmental Revenue Receivable					
0146	Due from Primary Government					
0147	Due from Component Unit					
0150	Other Receivables	989,067				
0170	Inventories	52,102				
0180	Prepaid Expenses (Expenditures)	3,022,956				
0190	Other Current Assets					
<b>Total Assets</b>		<b>\$36,274,382</b>				
0910	Deferred Outflows of Resources					
<b>Total Assets And Deferred Outflows Of Resources</b>		<b>\$36,274,382</b>				

LEA : 112679002     York City SD

Printed 11/20/2020 9:05:11 AM

Amounts Expressed in Whole Dollars		<u>Capital Reserve (690.</u> <u>1850)</u> <u>(31)</u>	<u>Capital Reserve (1431)</u> <u>(32)</u>	<u>Other Capital Projects</u> <u>Fund</u> <u>(39)</u>	<u>Debt Service</u> <u>(40)</u>	<u>Permanent</u> <u>(90)</u>
<b>Assets And Deferred Outflows Of Resources</b>						
<b>Assets</b>						
0100	Cash and Cash Equivalents		1,222,680			
0110	Investments					
0120	Taxes Receivable					
0130	Due From Other Funds					
0141	Due From Other Governments					
0142	State Revenue Receivable					
0143	Federal Revenue Receivable					
0145	Other Intergovernmental Revenue Receivable					
0146	Due from Primary Government					
0147	Due from Component Unit					
0150	Other Receivables					
0170	Inventories					
0180	Prepaid Expenses (Expenditures)					
0190	Other Current Assets					
<b>Total Assets</b>			<b>\$1,222,680</b>			
0910	Deferred Outflows of Resources					
<b>Total Assets And Deferred Outflows Of Resources</b>			<b>\$1,222,680</b>			



LEA : 112679002     York City SD

Printed 11/20/2020 9:05:11 AM

Amounts Expressed in Whole Dollars		<u>Total Governmental Funds</u>
<b>Assets And Deferred Outflows Of Resources</b>		
<b>Assets</b>		
0100 Cash and Cash Equivalents	19,738,215	
0110 Investments		
0120 Taxes Receivable	5,193,702	
0130 Due From Other Funds	262,323	
0141 Due From Other Governments	1,713,576	
0142 State Revenue Receivable	5,334,518	
0143 Federal Revenue Receivable	1,190,603	
0145 Other Intergovernmental Revenue Receivable		
0146 Due from Primary Government		
0147 Due from Component Unit		
0150 Other Receivables	989,067	
0170 Inventories	52,102	
0180 Prepaid Expenses (Expenditures)	3,022,956	
0190 Other Current Assets		
<b>Total Assets</b>	<b>\$37,497,062</b>	
0910 Deferred Outflows of Resources		
<b>Total Assets And Deferred Outflows Of Resources</b>	<b>\$37,497,062</b>	

LEA : 112679002      York City SD

Printed 11/20/2020 9:05:11 AM

Amounts Expressed in Whole Dollars	General Fund (10)	Student Sponsored Activity Fund (21)	Public Purpose Trust (27)	Other Compt Approved (28)	Athletic / Activity (29)
<b>Liabilities And Deferred Inflows Of Resources And Fund Balances</b>					
<b>Liabilities</b>					
0400 Due to Other Funds					
0411 Due to Other Governments					
0412 Due to Primary Government					
0413 Due to Component Unit					
0420 Accounts Payable	3,468,604				
0430 Contracts Payable					
0440 Current Portion of Long-Term Debt					
0450 Short-Term Payables					
0461 Accrued Salaries and Benefits	5,705,046				
0462 Payroll Deductions and Withholding	5,384,050				
0480 Unearned Revenues	3,816,851				
0490 Other Current Liabilities					
<b>Total Liabilities</b>	<b>\$18,374,551</b>				
0950 Deferred Inflows of Resources					
<b>Fund Balances</b>					
0810 Nonspendable Fund Balance	3,075,058				
0820 Restricted Fund Balance					
0830 Committed Fund Balance					
0840 Assigned Fund Balance					
0850 Unassigned Fund Balance	14,824,773				
<b>Total Fund Balances</b>	<b>\$17,899,831</b>				
<b>Total Liabilities, Deferred Inflows Of Resources And Fund Balances</b>	<b>\$36,274,382</b>				

LEA : 112679002     York City SD

Printed 11/20/2020 9:05:11 AM

Amounts Expressed in Whole Dollars		<u>Capital Reserve (690.</u> <u>1850)</u> <u>(31)</u>	<u>Capital Reserve (1431)</u> <u>(32)</u>	<u>Other Capital Projects</u> <u>Fund</u> <u>(39)</u>	<u>Debt Service</u> <u>(40)</u>	<u>Permanent</u> <u>(90)</u>
<b>Liabilities And Deferred Inflows Of Resources And Fund Balances</b>						
<b>Liabilities</b>						
0400	Due to Other Funds					
0411	Due to Other Governments					
0412	Due to Primary Government					
0413	Due to Component Unit					
0420	Accounts Payable		540,572			
0430	Contracts Payable					
0440	Current Portion of Long-Term Debt					
0450	Short-Term Payables					
0461	Accrued Salaries and Benefits					
0462	Payroll Deductions and Withholding					
0480	Unearned Revenues					
0490	Other Current Liabilities					
<b>Total Liabilities</b>			<b>\$540,572</b>			
0950	Deferred Inflows of Resources					
<b>Fund Balances</b>						
0810	Nonspendable Fund Balance					
0820	Restricted Fund Balance					
0830	Committed Fund Balance					
0840	Assigned Fund Balance		682,108			
0850	Unassigned Fund Balance					
<b>Total Fund Balances</b>			<b>\$682,108</b>			
<b>Total Liabilities, Deferred Inflows Of Resources And Fund Balances</b>			<b>\$1,222,680</b>			

LEA : 112679002     York City SD

Printed 11/20/2020 9:05:11 AM

Amounts Expressed in Whole Dollars		<u>Total Governmental Funds</u>
<b>Liabilities And Deferred Inflows Of Resources And Fund Balances</b>		
<b>Liabilities</b>		
0400 Due to Other Funds		
0411 Due to Other Governments		
0412 Due to Primary Government		
0413 Due to Component Unit		
0420 Accounts Payable	4,009,176	
0430 Contracts Payable		
0440 Current Portion of Long-Term Debt		
0450 Short-Term Payables		
0461 Accrued Salaries and Benefits	5,705,046	
0462 Payroll Deductions and Withholding	5,384,050	
0480 Unearned Revenues	3,816,851	
0490 Other Current Liabilities		
<b>Total Liabilities</b>	<b>\$18,915,123</b>	
0950 Deferred Inflows of Resources		
<b>Fund Balances</b>		
0810 Nonspendable Fund Balance	3,075,058	
0820 Restricted Fund Balance		
0830 Committed Fund Balance		
0840 Assigned Fund Balance	682,108	
0850 Unassigned Fund Balance	14,824,773	
<b>Total Fund Balances</b>	<b>\$18,581,939</b>	
<b>Total Liabilities, Deferred Inflows Of Resources And Fund Balances</b>	<b>\$37,497,062</b>	

LEA : 112679002      York City SD

Printed 11/20/2020 9:05:27 AM

Amounts Expressed in Whole Dollars	<u>General Fund</u> <u>(10)</u>	<u>Student Sponsored</u> <u>Activity Fund</u> <u>(21)</u>	<u>Public Purpose Trust</u> <u>(27)</u>	<u>Other Compt Approved</u> <u>(28)</u>	<u>Athletic / Activity</u> <u>(29)</u>
<b>Revenues</b>					
6000 Revenue from Local Sources	37,326,911				
7000 Revenue from State Sources	104,674,788				
8000 Revenue from Federal Sources	8,682,348				
<b>Total Revenues</b>	<b>\$150,684,047</b>				
<b>Expenditures</b>					
1000 Instruction	100,661,135				
2000 Support Services	37,173,366				
3000 Operation of Non-Instructional Services	1,153,268				
4000 Facilities Acquisition, Construction and Improvement Services					
5110 Debt Service	11,505,130				
5130 Refund of Prior Year Revenues / Receipts	189,436				
<b>Total Expenditures</b>	<b>\$150,682,335</b>				
<b>Excess (Deficiency) Of Revenues Over Expenditures</b>	<b>\$1,712</b>				
<b>Other Financing Sources (Uses)</b>					
9110 Face Value of Bonds Issued					
9120 Proceeds from Refunding of Bonds	17,470,000				
9130 Bond Premiums	1,929,117				
9200 Proceeds from Extended-Term Financing					
9300 Interfund Transfers - IN					
9400 Sale of or Compensation for Loss of Fixed Assets	150				
9710 Transfers from Component Units					
9720 Transfers from Primary Governments					
9910 Other Financing Sources Not Listed in the 9000 Series					
9990 Insurance Recoveries					
5120 Debt Service – Refunded Bonds	19,115,746				
5150 Bond Discounts					
5200 Interfund Transfers – Out					
5300 Transfers Out to Component Units/Primary Governments					
<b>Total Other Financing Sources (Uses)</b>	<b>\$283,521</b>				

Amounts Expressed in Whole Dollars	<u>Capital Reserve (690.1850)</u> <u>(31)</u>	<u>Capital Reserve (1431)</u> <u>(32)</u>	<u>Other Capital Projects</u> <u>Fund</u> <u>(39)</u>	<u>Debt Service</u> <u>(40)</u>	<u>Permanent</u> <u>(90)</u>
<b>Revenues</b>					
6000 Revenue from Local Sources		25,714			
7000 Revenue from State Sources					
8000 Revenue from Federal Sources					
<b>Total Revenues</b>		<b>\$25,714</b>			
<b>Expenditures</b>					
1000 Instruction					
2000 Support Services		1,433,096			
3000 Operation of Non-Instructional Services					
4000 Facilities Acquisition, Construction and Improvement Services		11,318			
5110 Debt Service					
5130 Refund of Prior Year Revenues / Receipts					
<b>Total Expenditures</b>		<b>\$1,444,414</b>			
<b>Excess (Deficiency) Of Revenues Over Expenditures</b>		<b>(\$1,418,700)</b>			
<b>Other Financing Sources (Uses)</b>					
9110 Face Value of Bonds Issued					
9120 Proceeds from Refunding of Bonds					
9130 Bond Premiums					
9200 Proceeds from Extended-Term Financing					
9300 Interfund Transfers - IN					
9400 Sale of or Compensation for Loss of Fixed Assets					
9710 Transfers from Component Units					
9720 Transfers from Primary Governments					
9910 Other Financing Sources Not Listed in the 9000 Series					
9990 Insurance Recoveries					
5120 Debt Service – Refunded Bonds					
5150 Bond Discounts					
5200 Interfund Transfers – Out					
5300 Transfers Out to Component Units/Primary Governments					
<b>Total Other Financing Sources (Uses)</b>					

Amounts Expressed in Whole Dollars		<u>Total Governmental Funds</u>
<b>Revenues</b>		
6000	Revenue from Local Sources	37,352,625
7000	Revenue from State Sources	104,674,788
8000	Revenue from Federal Sources	8,682,348
<b>Total Revenues</b>		<b>\$150,709,761</b>
<b>Expenditures</b>		
1000	Instruction	100,661,135
2000	Support Services	38,606,462
3000	Operation of Non-Instructional Services	1,153,268
4000	Facilities Acquisition, Construction and Improvement Services	11,318
5110	Debt Service	11,505,130
5130	Refund of Prior Year Revenues / Receipts	189,436
<b>Total Expenditures</b>		<b>\$152,126,749</b>
<b>Excess (Deficiency) Of Revenues Over Expenditures</b>		<b>(\$1,416,988)</b>
<b>Other Financing Sources (Uses)</b>		
9110	Face Value of Bonds Issued	
9120	Proceeds from Refunding of Bonds	17,470,000
9130	Bond Premiums	1,929,117
9200	Proceeds from Extended-Term Financing	
9300	Interfund Transfers - IN	
9400	Sale of or Compensation for Loss of Fixed Assets	150
9710	Transfers from Component Units	
9720	Transfers from Primary Governments	
9910	Other Financing Sources Not Listed in the 9000 Series	
9990	Insurance Recoveries	
5120	Debt Service – Refunded Bonds	19,115,746
5150	Bond Discounts	
5200	Interfund Transfers – Out	
5300	Transfers Out to Component Units/Primary Governments	
<b>Total Other Financing Sources (Uses)</b>		<b>\$283,521</b>

Amounts Expressed in Whole Dollars		<u>General Fund</u> <u>(10)</u>	<u>Student Sponsored</u> <u>Activity Fund</u> <u>(21)</u>	<u>Public Purpose Trust</u> <u>(27)</u>	<u>Other Compt Approved</u> <u>(28)</u>	<u>Athletic / Activity</u> <u>(29)</u>
<b>Special And Extraordinary Items</b>						
9920	Special Items – Gains					
9930	Extraordinary Items – Gains					
5520	Special Items – Losses					
5530	Extraordinary Items – Losses					
<b>Net Change In Fund Balances</b>		<b>\$285,233</b>				
<b>Fund Balance</b>						
0001	Fund Balance - Beginning of Fiscal Year	17,614,600				
<b>Fund Balance - End Of Year</b>		<b>\$17,899,833</b>				



Amounts Expressed in Whole Dollars		<u>Capital Reserve (690.</u> <u>1850)</u> <u>(31)</u>	<u>Capital Reserve (1431)</u> <u>(32)</u>	<u>Other Capital Projects</u> <u>Fund</u> <u>(39)</u>	<u>Debt Service</u> <u>(40)</u>	<u>Permanent</u> <u>(90)</u>
<b>Special And Extraordinary Items</b>						
9920	Special Items – Gains					
9930	Extraordinary Items – Gains					
5520	Special Items – Losses					
5530	Extraordinary Items – Losses					
<b>Net Change In Fund Balances</b>			<b>(\$1,418,700)</b>			
<b>Fund Balance</b>						
0001	Fund Balance - Beginning of Fiscal Year		2,100,808			
<b>Fund Balance - End Of Year</b>			<b>\$682,108</b>			

Amounts Expressed in Whole Dollars		<u>Total Governmental Funds</u>
<b>Special And Extraordinary Items</b>		
9920	Special Items – Gains	
9930	Extraordinary Items – Gains	
5520	Special Items – Losses	
5530	Extraordinary Items – Losses	
<b>Net Change In Fund Balances</b>		<b>(\$1,133,467)</b>
<b>Fund Balance</b>		
0001	Fund Balance - Beginning of Fiscal Year	19,715,408
<b>Fund Balance - End Of Year</b>		<b>\$18,581,941</b>

LEA : 112679002      York City SD

Printed 11/20/2020 9:05:39 AM

Amounts Expressed in Whole Dollars	Food Service (51)	Child Care Operations (52)	Other Enterprise (58)	TOTAL	Internal Service (60)
<b>Assets And Deferred Outflows Of Resources</b>					
<b>Current Assets</b>					
0100 Cash and Cash Equivalents	1,234,489			1,234,489	
0110 Investments					
0130 Due From Other Funds					
0141 Due From Other Governments					
0142 State Revenue Receivable	1,432			1,432	
0143 Federal Revenue Receivable	37,096			37,096	
0146 Due from Primary Government					
0147 Due from Component Unit					
0150 Other Receivables	4,941			4,941	
0170 Inventories	117,255			117,255	
0180 Prepaid Expenses (Expenditures)	175,634			175,634	
0190 Other Current Assets					
<b>Total Current Assets</b>	<b>\$1,570,847</b>			<b>\$1,570,847</b>	
<b>Noncurrent Assets</b>					
0211 Land					
0212 Site Improvements (Net)					
0220 Buildings and Building Improvements (Net)					
0230 Machinery, Equipment and Furniture (Net)	276,780			276,780	
0250 Construction in Progress					
0260 Long Term Prepayments					
0290 Other Noncurrent Assets					
<b>Total Noncurrent Assets</b>	<b>\$276,780</b>			<b>\$276,780</b>	
0910 Deferred Outflows of Resources	1,090,667			1,090,667	
<b>Total Assets And Deferred Outflows Of Resources</b>	<b>\$2,938,294</b>			<b>\$2,938,294</b>	

LEA : 112679002      York City SD

Printed 11/20/2020 9:05:39 AM

Amounts Expressed in Whole Dollars	Food Service (51)	Child Care Operations (52)	Other Enterprise (58)	TOTAL	Internal Service (60)
<b>Liabilities And Deferred Inflows Of Resources And Net Position</b>					
<b>Current Liabilities</b>					
0400 Due to Other Funds	262,323			262,323	
0411 Due to Other Governments					
0413 Due to Component Unit					
0420 Accounts Payable	82,637			82,637	
0430 Contracts Payable					
0440 Current Portion of Long-Term Debt					
0450 Short-Term Payables					
0461 Accrued Salaries and Benefits	10,344			10,344	
0462 Payroll Deductions and Withholding					
0480 Unearned Revenues	59,375			59,375	
0490 Other Current Liabilities					
<b>Total Current Liabilities</b>	<b>\$414,679</b>			<b>\$414,679</b>	
<b>Noncurrent Liabilities</b>					
0510 Bonds Payable					
0520 Extended-Term Financing Agreements Payable					
0530 Lease-Purchase Obligations					
0540 Accumulated Compensated Absences	32,237			32,237	
0550 Authority Lease Obligations					
0560 Other Post-Employment Benefits (OPEB)	471,364			471,364	
0570 Net Pension Liability	4,627,200			4,627,200	
0599 Other Noncurrent Liabilities					
<b>Total Noncurrent Liabilities</b>	<b>\$5,130,801</b>			<b>\$5,130,801</b>	
<b>Total Liabilities</b>	<b>\$5,545,480</b>			<b>\$5,545,480</b>	
0950 Deferred Inflows of Resources	128,168			128,168	
<b>Net Position</b>					
0791 Net Investment in Capital Assets	276,780			276,780	
0008 Restricted Net Position (0792 – 0798)	175,634			175,634	
0799 Unrestricted Net Position	(3,187,768)			(3,187,768)	
<b>Total Net Position</b>	<b>(\$2,735,354)</b>			<b>(\$2,735,354)</b>	
<b>Total Liabilities And Deferred Inflows Of Resources And Net Position</b>	<b>\$2,938,294</b>			<b>\$2,938,294</b>	

Amounts Expressed in Whole Dollars	<u>Food Service</u> <u>(51)</u>	<u>Child Care Operations</u> <u>(52)</u>	<u>Other Enterprise</u> <u>(58)</u>	<u>TOTAL</u>	<u>Internal Service</u> <u>(60)</u>
<b>Operating Revenues</b>					
6600 Food Service Revenue	64,410			64,410	
0071 Charges for Services					
0072 Other Operating Revenue					
<b>Total Operating Revenues</b>	<b>\$64,410</b>			<b>\$64,410</b>	
<b>Operating Expenses</b>					
100 Personnel Services – Salaries	1,316,116			1,316,116	
200 Personnel Services – Employee Benefits	1,073,132			1,073,132	
300 Purchased Professional and Technical Services					
400 Purchased Property Services	73,918			73,918	
500 Other Purchased Services	1,952,256			1,952,256	
600 Supplies	475,226			475,226	
740 Depreciation	41,761			41,761	
810 Dues and Fees					
890 Miscellaneous Expenditures	41,245			41,245	
<b>Total Operating Expenses</b>	<b>\$4,973,654</b>			<b>\$4,973,654</b>	
<b>Operating Income (Loss)</b>	<b>(\$4,909,244)</b>			<b>(\$4,909,244)</b>	
<b>Non Operating Revenues (Expenses)</b>					
6500 Earnings on Investments	2,819			2,819	
6920 Contributions and Donations from Private Sources					
6930 Gains or Losses on Sale of Fixed Assets					
6991 Refunds of a Prior Year Expenditure					
7000 Revenue from State Sources	159,863			159,863	
8000 Revenue from Federal Sources	4,345,926			4,345,926	
9990 Insurance Recoveries					
820 Claims and Judgments Against the LEA					
830 Interest					
<b>TOTAL Non Operating Revenues (Expenses)</b>	<b>\$4,508,608</b>			<b>\$4,508,608</b>	
<b>Income (Loss) Before Contributions And Transfers</b>	<b>(\$400,636)</b>			<b>(\$400,636)</b>	

Amounts Expressed in Whole Dollars	<u>Food Service</u> <u>(51)</u>	<u>Child Care Operations</u> <u>(52)</u>	<u>Other Enterprise</u> <u>(58)</u>	<u>TOTAL</u>	<u>Internal Service</u> <u>(60)</u>
<b>Contributions, Transfers, and Special and Extraordinary Items</b>					
5200 Interfund Transfers – Out					
5300 Transfers Out to Component Units/Primary Governments					
5520 Special Items – Losses					
5530 Extraordinary Items – Losses					
9300 Interfund Transfers - IN					
9500 Capital Contributions					
9700 Transfers IN From Component Units/Primary Governments					
9920 Special Items – Gains					
9930 Extraordinary Items – Gains					
<b>Change In Net Position</b>	<b>(\$400,636)</b>			<b>(\$400,636)</b>	
0002 Net Position - Beginning of Fiscal Year	(2,154,823)			(2,154,823)	
0003 Accounting Changes / Residual Equity Transfers	(179,895)			(179,895)	
<b>Net Position - End Of Year</b>	<b>(\$2,735,354)</b>			<b>(\$2,735,354)</b>	

LEA : 112679002      York City SD

Printed 11/20/2020 9:06:18 AM

Amounts Expressed in Whole Dollars	Food Service (51)	Child Care Operations (52)	Other Enterprise (58)	TOTAL	Internal Service(60)
<b>Cash Flows From Operating Activities</b>					
0011 Cash Receipts From Users					
0012 Cash Receipts From Assessments Made to Other Funds					
0013 Cash Receipts From Earnings on Investments					
0014 Cash Receipts From Other Operating Revenue					
0015 Cash Payments To Employees For Services	2,389,248			2,389,248	
0016 Cash Payments For Insurance Claims					
0017 Cash Payments To Suppliers For Goods and Services	2,501,400			2,501,400	
0018 Cash Payments For Other Operating Expenses	83,006			83,006	
<b>Net Cash Provided By (Used For) Operating Activities</b>	<b>(\$4,973,654)</b>			<b>(\$4,973,654)</b>	
<b>Cash Flows From Non-Capital Financing Activities</b>					
0021 Receipts From Local Sources - 6000	67,229			67,229	
0022 Receipts From State Sources - 7000	159,863			159,863	
0023 Receipts From Federal Sources -8000	4,345,926			4,345,926	
0024 Notes and Loans Received (Repaid)					
0025 Interest Paid on Notes/Loans - 5100-830					
0026 Operating Transfers In (Out)/Residual Equity Trans					
0027 Operating Transfers In (Out) Primary Government / Comp Unit					
0028 Receipts From Refund of Prior Year Expenditures - 6991					
0029 Special and Extraordinary Gains (losses)					
0030 Receipts from Insurance Recoveries -9990					
<b>Net Cash Prov By (Used for) Non-Capital Financing Activities</b>	<b>\$4,573,018</b>			<b>\$4,573,018</b>	
<b>Cash Flows From Capital and Related Financing Activities</b>					
0031 Payments For Fac Acq, Const, and Imp - 4000					
0032 Gain / (Loss) on Sale of Fixed Assets - 6930					
0033 Proceeds From Extended Term Financing - 9200					
0034 Principal Paid on Financing Agreements					
0035 Interest Paid on Financing Agreements - 5100-830					
0036 (Inc) Dec in Contributed Capital					
<b>Net Cash Prov By (Used for) Capital and Related Financing Activities</b>					
<b>Cash Flows From Investing Activities</b>					
0041 Earnings on Investments - 6500					
0042 Purchase of Inv Securities / Deposits to Inv Pools					
0043 Receipts From Investment Pool Withdrawals					
0044 Proceeds from Sale and Maturity of Inv Securities					

LEA : 112679002      York City SD

Printed 11/20/2020 9:06:18 AM

0045   Loans Received (Paid)

**Net Cash Prov By (Used for) Investing Activities**



LEA : 112679002      York City SD

Printed 11/20/2020 9:06:18 AM

	Food Service (51)	Child Care Operations (52)	Other Enterprise (58)	TOTAL	Internal Service (60)
<b>Net Increase (Decrease) in Cash Flows</b>	(400,636)			(400,636)	
0004 Cash and Cash Equivalents Beginning of Year	1,635,125			1,635,125	
<b>Cash and Cash Equivalents at Year End</b>	<b>\$1,234,489</b>			<b>\$1,234,489</b>	
<b>Reconciliation of Operating Income (Loss) To Net Cash Provided by (Used For) Operating Activities</b>					
0005 Operating Income (Loss) per REP	(4,909,244)			(4,909,244)	
<b>Adjustments</b>					
0051 Depreciation and Net Amortization	41,761			41,761	
0052 Provision for Uncollectible Accounts					
0053 Other Adjustments					
<b>Effect of Changes in Assets, Liabilities, Deferred Outflows and Deferred Inflows</b>					
0054 (Inc) Dec In Accounts Receivable (0120-0150)	(810,278)			(810,278)	
0055 Advances to Other Funds (0160)					
0056 (Inc) Dec in Inventories (0170)	(65,152)			(65,152)	
0057 (Inc) Dec in Prepaid Expenses (0180)	(12,024)			(12,024)	
0058 (Inc) Dec in Other Current or Noncurrent Assets					
0064 Deferred Outflows (0910)	1,090,667			1,090,667	
0059 Inc (Dec) in Accounts Payable (0400-0450)	(118,929)			(118,929)	
0060 Inc (Dec) in Accrued Salaries/Benefits (0461)	(6,244)			(6,244)	
0065 Inc (Dec) in Net Pension Liabilities (0570)					
0066 Inc (Dec) in Other Postemp Benefit Oblig (0560)	(109,575)			(109,575)	
0061 Inc (Dec) in Payroll Deductions/Withholding (0462)					
0062 Inc (Dec) in Unearned Revenue (0480)	43,853			43,853	
0063 Inc (Dec) in Other Current or Noncurrent Liabilities	9,679			9,679	
0067 Deferred Inflows (0950)	(128,168)			(128,168)	
<b>Total Adjustments</b>	<b>(\$64,410)</b>			<b>(\$64,410)</b>	
<b>Cash Provided By (Used for) Total</b>	<b>(\$4,973,654)</b>			<b>(\$4,973,654)</b>	

COMBINED STATEMENT OF CASH FLOWS  
SCHEDULE OF NONCASH INVESTING, CAPITAL, AND FINANCING ACTIVITIES

Explanation of Transaction and Balance Sheet Effect	Amount
Total	

LEA : 112679002    York City SD

Printed 11/20/2020 9:06:32 AM

Amounts Expressed in Whole Dollars	<u>Private Purpose Trust</u> <u>(71)</u>	<u>Investment Trust</u> <u>(72)</u>	<u>Pension Trust</u> <u>(73)</u>	<u>Student Activity Custodial</u> <u>(81)</u>
<b>Assets And Deferred Outflows Of Resources</b>				
<b>Assets</b>				
0100 Cash and Cash Equivalents	143,241			63,371
0110 Investments				
0130 Due From Other Funds				
0140 Due from Other Governments, Primary Government and Component Units				
0150 Other Receivables				
0170 Inventories				
0180 Prepaid Expenses (Expenditures)				
0190 Other Current Assets				
0220 Buildings and Building Improvements (Net)				
0230 Machinery, Equipment and Furniture (Net)				
<b>Total Assets</b>	<b>\$143,241</b>			<b>\$63,371</b>
0910 Deferred Outflows of Resources				
<b>Total Assets And Deferred Outflows Of Resources</b>	<b>\$143,241</b>			<b>\$63,371</b>

LEA : 112679002     York City SD

Printed 11/20/2020 9:06:32 AM

Amounts Expressed in Whole Dollars		<u>Other Custodial</u> <u>(89)</u>	<u>Fiduciary Component Units</u> <u>(98)</u>	<u>Total Fiduciary Funds</u>
<b>Assets And Deferred Outflows Of Resources</b>				
<b>Assets</b>				
0100	Cash and Cash Equivalents	133,952		340,564
0110	Investments			
0130	Due From Other Funds			
0140	Due from Other Governments, Primary Government and Component Units			
0150	Other Receivables			
0170	Inventories			
0180	Prepaid Expenses (Expenditures)			
0190	Other Current Assets			
0220	Buildings and Building Improvements (Net)			
0230	Machinery, Equipment and Furniture (Net)			
<b>Total Assets</b>		<b>\$133,952</b>		<b>\$340,564</b>
0910	Deferred Outflows of Resources			
<b>Total Assets And Deferred Outflows Of Resources</b>		<b>\$133,952</b>		<b>\$340,564</b>

LEA : 112679002    York City SD

Printed 11/20/2020 9:06:32 AM

Amounts Expressed in Whole Dollars	<u>Private Purpose Trust</u> <u>(71)</u>	<u>Investment Trust</u> <u>(72)</u>	<u>Pension Trust</u> <u>(73)</u>	<u>Student Activity Custodial</u> <u>(81)</u>
<b>Liabilities, Deferred Inflows Of Resources And Net Position</b>				
<b>Liabilities</b>				
0400 Due to Other Funds				
0410 Due to Other Governments, Primary Government and Component Units				
0420 Accounts Payable				
0430 Contracts Payable				
0450 Short-Term Payables				
0460 Payroll Accruals and Withholdings				
0480 Unearned Revenues				
0490 Other Current Liabilities				
<b>Total Liabilities</b>				
0950 Deferred Inflows of Resources				
<b>Net Position</b>				
0791 Net Investment in Capital Assets				
0009 Restricted Net Position (0792 – 0798)	143,241			63,371
0799 Unrestricted Net Position				
<b>Total Net Position</b>	<b>\$143,241</b>			<b>\$63,371</b>
<b>Total Liabilities, Deferred Inflows Of Resources And Net Position</b>	<b>\$143,241</b>			<b>\$63,371</b>

LEA : 112679002     York City SD

Printed 11/20/2020 9:06:32 AM

Amounts Expressed in Whole Dollars		<u>Other Custodial</u>	<u>Fiduciary Component Units</u>	<u>Total Fiduciary Funds</u>
		(89)	(98)	
<b>Liabilities, Deferred Inflows Of Resources And Net Position</b>				
<b>Liabilities</b>				
0400	Due to Other Funds			
0410	Due to Other Governments, Primary Government and Component Units			
0420	Accounts Payable			
0430	Contracts Payable			
0450	Short-Term Payables			
0460	Payroll Accruals and Withholdings			
0480	Unearned Revenues			
0490	Other Current Liabilities			
<b>Total Liabilities</b>				
0950	Deferred Inflows of Resources			
<b>Net Position</b>				
0791	Net Investment in Capital Assets			
0009	Restricted Net Position (0792 – 0798)	133,952		340,564
0799	Unrestricted Net Position			
<b>Total Net Position</b>		<b>\$133,952</b>		<b>\$340,564</b>
<b>Total Liabilities, Deferred Inflows Of Resources And Net Position</b>		<b>\$133,952</b>		<b>\$340,564</b>

LEA : 112679002     York City SD

Printed 11/20/2020 9:06:54 AM

Amounts Expressed in Whole Dollars	<u>Private Purpose Trust</u> <u>(71)</u>	<u>Investment Trust</u> <u>(72)</u>	<u>Pension Trust</u> <u>(73)</u>	<u>Student Activity</u> <u>Custodial</u> <u>(81)</u>	<u>Other Custodial</u> <u>(89)</u>	<u>Fiduciary Component</u> <u>Units</u> <u>(98)</u>
<b>Additions</b>						
0091 Gifts and Contributions	210					
0095 Net Investment Earnings				722	1,672	
0092 Other Additions	1,765			23,562	97,834	
<b>Deductions</b>						
0093 Scholarships Awarded	305					
0094 Other Deductions				15,380	75,787	
<b>Change In Net Position</b>	<b>\$1,670</b>			<b>\$8,904</b>	<b>\$23,719</b>	
0006 Net Position – Beginning of Fiscal Year	141,571			54,467	110,233	
0007 Net Position Held in Trust for Pension Benefits						
<b>Net Position - End of Fiscal Year</b>	<b>\$143,241</b>			<b>\$63,371</b>	<b>\$133,952</b>	

LEA : 112679002     York City SD

Printed 11/20/2020 9:06:54 AM

Amounts Expressed in Whole Dollars		<u>Total Fiduciary</u>
		<u>Funds</u>
<b>Additions</b>		
0091	Gifts and Contributions	210
0095	Net Investment Earnings	2,394
0092	Other Additions	123,161
<b>Deductions</b>		
0093	Scholarships Awarded	305
0094	Other Deductions	91,167
<b>Change In Net Position</b>		<b>\$34,293</b>
0006	Net Position – Beginning of Fiscal Year	306,271
0007	Net Position Held in Trust for Pension Benefits	
<b>Net Position - End of Fiscal Year</b>		<b>\$340,564</b>



	Revenue Reported In Current Year	Current Year Tax Accrual	Prior Year Tax Accrual	Taxes Collected In Current Year
<b>Revenue from Local Sources</b>				
6111 Current Real Estate Taxes	28,338,892.28			28,338,892.28
6113 Public Utility Realty Taxes	28,262.94			28,262.94
6114 Payments in Lieu of Current Taxes - State / Local	172,195.00			172,195.00
6151 Current Act 511 Earned Income Taxes	2,623,978.06			2,623,978.06
6153 Current Act 511 Real Estate Transfer Taxes	609,854.37			609,854.37
6411 Delinquent Real Estate Taxes	2,311,804.82			2,311,804.82
6500 Earnings on Investments	718,354.79			
6700 Revenues from LEA Activities	23,319.00			
6831 Federal Revenue Received from Other Pennsylvania Public LEAs	34,761.80			
6832 Federal IDEA Revenue Received as Pass Through	1,660,230.00			
6910 Rentals	456,022.80			
6920 Contributions and Donations from Private Sources	61,835.53			
6941 Regular Day School Tuition	10,125.00			
6942 Summer School Tuition	8,400.00			
6944 Receipts from Other LEAs in Pennsylvania - Education	168,806.64			
6969 All Other Services Provided Other Governments	13,500.00			
6999 Other Revenues Not Specified Above	86,567.98			
<b>TOTAL Revenue from Local Sources</b>	<b>\$37,326,911.01</b>			<b>\$34,084,987.47</b>

	Revenue Reported In Current Year			
<b>Revenue from State Sources</b>				
7111 Basic Education Funding-Formula	70,203,315.17			
7112 Basic Education Funding-Social Security	2,984,945.45			
7160 Tuition for Orphans Subsidy	240,262.71			
7271 Special Education funds for School-Aged Pupils	6,584,836.53			
7280 Adult Literacy	330,000.00			
7292 Pre-K Counts	2,633,750.00			
7299 Program Revenues Not Listed Previously in the 7200 Series	17,223.00			
7311 Pupil Transportation Subsidy	459,754.43			
7312 Nonpublic and Charter School Pupil Transportation Subsidy	5,005.00			
7320 Rental and Sinking Fund Payments / Building Reimbursement Subsidy	2,177,414.49			
7330 Health Services (Medical, Dental, Nurse, Act 25)	139,821.02			
7340 State Property Tax Reduction Allocation	2,900,522.86			
7369 Other Safe School Grants	114,946.40			
7505 Ready to Learn Block Grant	1,566,041.00			
7506 PAsmart Grants	25,003.75			
7599 Other State Revenue Not Listed Elsewhere in the 7000 Series	320.00			
7820 State Share of Retirement Contributions	14,291,626.11			
<b>TOTAL Revenue from State Sources</b>	<b>\$104,674,787.92</b>			

	Revenue Reported In Current Year			
<b><u>Revenue from Federal Sources</u></b>				
8190 Other Unrestricted Federal Grants-in-Aid Direct from the Federal Government	68,311.96			
8514 NCLB, Title I - Improving the Academic Achievement of the Disadvantaged	4,925,227.40			
8515 NCLB, Title II - Preparing, Training and Recruiting High Quality Teachers and Principals	386,523.58			
8516 NCLB, Title III - Language Instruction for Limited English Proficient and Immigrant Students	325,784.72			
8517 NCLB, Title IV - 21St Century Schools	940,071.01			
8690 Other Restricted Federal Grants-in-Aid Through the Commonwealth of PA	73,346.00			
8732 ARRA - Qualified School Construction Bonds (QSCB)	1,116,295.11			
8733 ARRA - Qualified Zone Academy Bonds (QZAB)	424,466.10			
8810 School-Based Access Medicaid Reimbursement Program (SBAP) Reimbursements (Access)	279,008.00			
8820 Medical Assistance Reimbursement for Administrative Claiming (Quarterly) Program	143,313.63			
<b>TOTAL Revenue from Federal Sources</b>	<b>\$8,682,347.51</b>			

Revenue Reported In Current Year				
<b><u>Other Financing Sources</u></b>				
9120	Proceeds from Refunding of Bonds	17,470,000.00		
9130	Bond Premiums	1,929,117.40		
9400	Sale of or Compensation for Loss of Fixed Assets	150.00		
<b>TOTAL Other Financing Sources</b>		<b>\$19,399,267.40</b>		
<b>TOTAL FROM ALL SOURCES</b>		<b>\$170,083,313.84</b>		<b>\$34,084,987.47</b>

LEA : 112679002     York City SD

Printed 11/20/2020 9:07:16 AM

	<u>General Fund (10)</u>	<u>Student Sponsored</u> <u>Activity Fund (21)</u>	<u>Public Purpose</u> <u>Trust (27)</u>	<u>Other Compt</u> <u>Approved (28)</u>	<u>Athletic / Activity</u> <u>(29)</u>	<u>Capital Reserve</u> <u>(690, 1850) (31)</u>
<b>6000 Revenue from Local Sources</b>						
6111 Current Real Estate Taxes	28,338,892.28					
6113 Public Utility Realty Taxes	28,262.94					
6114 Payments in Lieu of Current Taxes - State / Local	172,195.00					
6151 Current Act 511 Earned Income Taxes	2,623,978.06					
6153 Current Act 511 Real Estate Transfer Taxes	609,854.37					
6411 Delinquent Real Estate Taxes	2,311,804.82					
6500 Earnings on Investments	718,354.79					
6700 Revenues from LEA Activities	23,319.00					
6831 Federal Revenue Received from Other Pennsylvania Public LEAs	34,761.80					
6832 Federal IDEA Revenue Received as Pass Through	1,660,230.00					
6910 Rentals	456,022.80					
6920 Contributions and Donations from Private Sources	61,835.53					
6941 Regular Day School Tuition	10,125.00					
6942 Summer School Tuition	8,400.00					
6944 Receipts from Other LEAs in Pennsylvania - Education	168,806.64					
6969 All Other Services Provided Other Governments	13,500.00					
6999 Other Revenues Not Specified Above	86,567.98					
<b>6000 Total Revenue from Local Sources</b>	<b>\$37,326,911.01</b>					
<b>7000 Revenue from State Sources</b>						
7111 Basic Education Funding-Formula	70,203,315.17					
7112 Basic Education Funding-Social Security	2,984,945.45					
7160 Tuition for Orphans Subsidy	240,262.71					
7271 Special Education funds for School-Aged Pupils	6,584,836.53					
7280 Adult Literacy	330,000.00					
7292 Pre-K Counts	2,633,750.00					
7299 Program Revenues Not Listed Previously in the 7200 Series	17,223.00					
7311 Pupil Transportation Subsidy	459,754.43					
7312 Nonpublic and Charter School Pupil Transportation Subsidy	5,005.00					
7320 Rental and Sinking Fund Payments / Building Reimbursement Subsidy	2,177,414.49					
7330 Health Services (Medical, Dental, Nurse, Act 25)	139,821.02					
7340 State Property Tax Reduction Allocation	2,900,522.86					
7369 Other Safe School Grants	114,946.40					
7505 Ready to Learn Block Grant	1,566,041.00					
7506 PAsmart Grants	25,003.75					
7599 Other State Revenue Not Listed Elsewhere in the 7000 Series	320.00					

LEA : 112679002      York City SD

Printed 11/20/2020 9:07:16 AM

	Capital Reserve (1431) (32)	Other Capital Projects Fund (39)	Debt Service (40)	Permanent (90)	Total
<b>6000 Revenue from Local Sources</b>					
6111 Current Real Estate Taxes					28,338,892.28
6113 Public Utility Realty Taxes					28,262.94
6114 Payments in Lieu of Current Taxes - State / Local					172,195.00
6151 Current Act 511 Earned Income Taxes					2,623,978.06
6153 Current Act 511 Real Estate Transfer Taxes					609,854.37
6411 Delinquent Real Estate Taxes					2,311,804.82
6500 Earnings on Investments	25,714.04				744,068.83
6700 Revenues from LEA Activities					23,319.00
6831 Federal Revenue Received from Other Pennsylvania Public LEAs					34,761.80
6832 Federal IDEA Revenue Received as Pass Through					1,660,230.00
6910 Rentals					456,022.80
6920 Contributions and Donations from Private Sources					61,835.53
6941 Regular Day School Tuition					10,125.00
6942 Summer School Tuition					8,400.00
6944 Receipts from Other LEAs in Pennsylvania - Education					168,806.64
6969 All Other Services Provided Other Governments					13,500.00
6999 Other Revenues Not Specified Above					86,567.98
<b>6000 Total Revenue from Local Sources</b>	<b>\$25,714.04</b>				<b>\$37,352,625.05</b>
<b>7000 Revenue from State Sources</b>					
7111 Basic Education Funding-Formula					70,203,315.17
7112 Basic Education Funding-Social Security					2,984,945.45
7160 Tuition for Orphans Subsidy					240,262.71
7271 Special Education funds for School-Aged Pupils					6,584,836.53
7280 Adult Literacy					330,000.00
7292 Pre-K Counts					2,633,750.00
7299 Program Revenues Not Listed Previously in the 7200 Series					17,223.00
7311 Pupil Transportation Subsidy					459,754.43
7312 Nonpublic and Charter School Pupil Transportation Subsidy					5,005.00
7320 Rental and Sinking Fund Payments / Building Reimbursement Subsidy					2,177,414.49
7330 Health Services (Medical, Dental, Nurse, Act 25)					139,821.02
7340 State Property Tax Reduction Allocation					2,900,522.86
7369 Other Safe School Grants					114,946.40
7505 Ready to Learn Block Grant					1,566,041.00
7506 PAsmart Grants					25,003.75
7599 Other State Revenue Not Listed Elsewhere in the 7000 Series					320.00

LEA : 112679002      York City SD

Printed 11/20/2020 9:07:16 AM

	<u>General Fund (10)</u>	<u>Student Sponsored Activity Fund (21)</u>	<u>Public Purpose Trust (27)</u>	<u>Other Compt Approved (28)</u>	<u>Athletic / Activity (29)</u>	<u>Capital Reserve (690, 1850) (31)</u>
<b>7000 Revenue from State Sources</b>						
7820 State Share of Retirement Contributions	14,291,626.11					
<b>7000 Total Revenue from State Sources</b>	<b>\$104,674,787.92</b>					
<b>8000 Revenue from Federal Sources</b>						
8190 Other Unrestricted Federal Grants-in-Aid Direct from the Federal Government	68,311.96					
8514 NCLB, Title I - Improving the Academic Achievement of the Disadvantaged	4,925,227.40					
8515 NCLB, Title II - Preparing, Training and Recruiting High Quality Teachers and Principals	386,523.58					
8516 NCLB, Title III - Language Instruction for Limited English Proficient and Immigrant Students	325,784.72					
8517 NCLB, Title IV - 21st Century Schools	940,071.01					
8690 Other Restricted Federal Grants-in-Aid Through the Commonwealth of PA	73,346.00					
8732 ARRA - Qualified School Construction Bonds (QSCB)	1,116,295.11					
8733 ARRA - Qualified Zone Academy Bonds (QZAB)	424,466.10					
8810 School-Based Access Medicaid Reimbursement Program (SBAP) Reimbursements (Access)	279,008.00					
8820 Medical Assistance Reimbursement for Administrative Claiming (Quarterly) Program	143,313.63					
<b>8000 Total Revenue from Federal Sources</b>	<b>\$8,682,347.51</b>					
<b>9000 Other Financing Sources</b>						
9120 Proceeds from Refunding of Bonds	17,470,000.00					
9130 Bond Premiums	1,929,117.40					
9400 Sale of or Compensation for Loss of Fixed Assets	150.00					
<b>9000 Total Other Financing Sources</b>	<b>\$19,399,267.40</b>					
<b>Total From All Sources</b>	<b>\$170,083,313.84</b>					

LEA : 112679002     York City SD

Printed 11/20/2020 9:07:16 AM

	<u>Capital Reserve</u> <u>(1431) (32)</u>	<u>Other Capital</u> <u>Projects Fund (39)</u>	<u>Debt Service (40)</u>	<u>Permanent (90)</u>	<u>Total</u>
<b>7000 Revenue from State Sources</b>					
7820 State Share of Retirement Contributions					14,291,626.11
<b>7000 Total Revenue from State Sources</b>					<b>\$104,674,787.92</b>
<b>8000 Revenue from Federal Sources</b>					
8190 Other Unrestricted Federal Grants-in-Aid Direct from the Federal Government					68,311.96
8514 NCLB, Title I - Improving the Academic Achievement of the Disadvantaged					4,925,227.40
8515 NCLB, Title II - Preparing, Training and Recruiting High Quality Teachers and Principals					386,523.58
8516 NCLB, Title III - Language Instruction for Limited English Proficient and Immigrant Students					325,784.72
8517 NCLB, Title IV - 21st Century Schools					940,071.01
8690 Other Restricted Federal Grants-in-Aid Through the Commonwealth of PA					73,346.00
8732 ARRA - Qualified School Construction Bonds (QSCB)					1,116,295.11
8733 ARRA - Qualified Zone Academy Bonds (QZAB)					424,466.10
8810 School-Based Access Medicaid Reimbursement Program (SBAP) Reimbursements (Access)					279,008.00
8820 Medical Assistance Reimbursement for Administrative Claiming (Quarterly) Program					143,313.63
<b>8000 Total Revenue from Federal Sources</b>					<b>\$8,682,347.51</b>
<b>9000 Other Financing Sources</b>					
9120 Proceeds from Refunding of Bonds					17,470,000.00
9130 Bond Premiums					1,929,117.40
9400 Sale of or Compensation for Loss of Fixed Assets					150.00
<b>9000 Total Other Financing Sources</b>					<b>\$19,399,267.40</b>
<b>Total From All Sources</b>	<b>\$25,714.04</b>				<b>\$170,109,027.88</b>



LEA : 112679002    York City SD

Printed 11/20/2020 9:07:27 AM

	<u>General Fund (10)</u>	<u>Student Sponsored Activity Fund (21)</u>	<u>Public Purpose Trust (27)</u>	<u>Other Compt Approved (28)</u>	<u>Athletic / Activity (29)</u>	<u>Capital Reserve (690. 1850) (31)</u>
Revenue from Local Sources	37,326,911.01					
Revenue from State Sources	104,674,787.92					
Revenue from Federal Sources	8,682,347.51					
Other Financing Sources	19,399,267.40					
Total From All Sources	\$170,083,313.84					

LEA : 112679002    York City SD

Printed 11/20/2020 9:07:27 AM

	<u>Capital Reserve (1431)</u> <u>(32)</u>	<u>Other Capital Projects</u> <u>Fund (39)</u>	<u>Debt Service (40)</u>	<u>Permanent (90)</u>	<u>Total</u>
Revenue from Local Sources	25,714.04				37,352,625.05
Revenue from State Sources					104,674,787.92
Revenue from Federal Sources					8,682,347.51
Other Financing Sources					19,399,267.40
Total From All Sources	\$25,714.04				\$170,109,027.88

LEA : 112679002      York City SD

Printed 11/20/2020 9:07:42 AM

<b>General Fund (10)</b>	
<b>1000 Instruction</b>	<b><u>Total</u></b>
<b>100 <u>Personnel Services – Salaries</u></b>	
100 Personnel Services – Salaries	34,713,800.89
<b>Total Personnel Services – Salaries</b>	<b>\$34,713,800.89</b>
<b>200 <u>Personnel Services – Employee Benefits</u></b>	
210 Group Insurance – Contracted Provider	8,634,373.78
220 Social Security Contributions	2,604,014.34
230 PSERS Retirement Contributions	11,906,210.34
250 Unemployment Compensation	16,216.16
260 Workers' Compensation	427,002.27
291 Other Retirement Plans	923.00
<b>Total Personnel Services – Employee Benefits</b>	<b>\$23,588,739.89</b>
<b>300 <u>Purchased Professional and Technical Services</u></b>	
322 Professional Educational Services – Ius	1,143,089.71
329 Professional Educational Services – Other	2,938,545.64
330 Other Professional Services	1,287,055.39
<b>Total Purchased Professional and Technical Services</b>	<b>\$5,368,690.74</b>
<b>400 <u>Purchased Property Services</u></b>	
410 Cleaning Services	10,284.75
430 Repairs and Maintenance Services	67,109.61
<b>Total Purchased Property Services</b>	<b>\$77,394.36</b>
<b>500 <u>Other Purchased Services</u></b>	
510 Student Transportation Services	10,827.15
561 Tuition To Other School Districts Within the State	989,444.41
562 Tuition To Pennsylvania Charter Schools	24,659,341.11
564 Tuition To Career and Technology Centers	4,978,697.62
568 Tuition To Private Residential Rehabilitative Institutions (PRRI) [In-State] and Detention Centers	1,076,488.92
569 Tuition – Other	67,250.00
580 Travel	21,982.30
594 IU Payment By Withholding for Institutionalized Children's Programs – Special Classes	391,388.64
599 Other Miscellaneous Purchased Services	124,708.54
<b>Total Other Purchased Services</b>	<b>\$32,320,128.69</b>
<b>600 <u>Supplies</u></b>	
610 General Supplies	1,578,243.06
620 Energy	30,000.00
630 Food	12,859.85
640 Books and Periodicals	797,206.81
<b>Total Supplies</b>	<b>\$2,418,309.72</b>
<b>700 <u>Property</u></b>	
752 Capital Equipment – Original and Additional	33,826.91
<b>Total Property</b>	<b>\$33,826.91</b>
<b>800 <u>Other Objects</u></b>	
810 Dues and Fees	134,245.44

LEA : 112679002    York City SD

Printed 11/20/2020 9:07:42 AM

General Fund (10)		
1000 Instruction		<u>Total</u>
800 <u>Other Objects</u>		
890 Miscellaneous Expenditures	2,005,998.60	
Total Other Objects	\$2,140,244.04	
Total 1000 Instruction	\$100,661,135.24	

LEA : 112679002     York City SD

Printed 11/20/2020 9:07:42 AM

<b>General Fund (10)</b>				
<b>1100 Regular Programs – Elementary / Secondary</b>	<b><u>Elementary</u></b>	<b><u>Secondary</u></b>	<b><u>Federal</u></b>	<b><u>Total</u></b>
<b>100 <u>Personnel Services – Salaries</u></b>				
100 Personnel Services – Salaries	14,854,603.78	8,264,608.05	1,750,501.93	24,869,713.76
<b>Total Personnel Services – Salaries</b>	<b>\$14,854,603.78</b>	<b>\$8,264,608.05</b>	<b>\$1,750,501.93</b>	<b>\$24,869,713.76</b>
<b>200 <u>Personnel Services – Employee Benefits</u></b>				
210 Group Insurance – Contracted Provider	3,900,828.29	1,356,403.11	459,630.82	5,716,862.22
220 Social Security Contributions	1,115,308.56	620,218.88	131,006.94	1,866,534.38
230 PSERS Retirement Contributions	5,114,352.68	3,394,661.80	162,745.45	8,671,759.93
250 Unemployment Compensation	5,868.45	3,339.04	825.21	10,032.70
260 Workers' Compensation	266,538.72	8,946.73	20,847.69	296,333.14
<b>Total Personnel Services – Employee Benefits</b>	<b>\$10,402,896.70</b>	<b>\$5,383,569.56</b>	<b>\$775,056.11</b>	<b>\$16,561,522.37</b>
<b>300 <u>Purchased Professional and Technical Services</u></b>				
329 Professional Educational Services – Other	4,019.12	1,191,091.35	521,895.11	1,717,005.58
330 Other Professional Services	681,197.65	582,628.49		1,263,826.14
<b>Total Purchased Professional and Technical Services</b>	<b>\$685,216.77</b>	<b>\$1,773,719.84</b>	<b>\$521,895.11</b>	<b>\$2,980,831.72</b>
<b>400 <u>Purchased Property Services</u></b>				
410 Cleaning Services		284.75		284.75
430 Repairs and Maintenance Services	8,209.64	3,799.97		12,009.61
<b>Total Purchased Property Services</b>	<b>\$8,209.64</b>	<b>\$4,084.72</b>		<b>\$12,294.36</b>
<b>500 <u>Other Purchased Services</u></b>				
510 Student Transportation Services	4,403.73	6,423.42		10,827.15
561 Tuition To Other School Districts Within the State	36,197.35	68,616.13		104,813.48
562 Tuition To Pennsylvania Charter Schools	100,016.24	16,569,356.70		16,669,372.94
568 Tuition To Private Residential Rehabilitative Institutions (PRRI) [In-State] and Detention Centers	103,745.46	92,200.05		195,945.51
580 Travel		21,332.30		21,332.30
594 IU Payment By Withholding for Institutionalized Children's Programs – Special Classes	63,381.68	20,397.22		83,778.90
<b>Total Other Purchased Services</b>	<b>\$307,744.46</b>	<b>\$16,778,325.82</b>		<b>\$17,086,070.28</b>
<b>600 <u>Supplies</u></b>				
610 General Supplies	75,452.78	391,487.50	816,789.72	1,283,730.00
630 Food			2,415.00	2,415.00
640 Books and Periodicals	140,131.46	58,245.95	598,829.40	797,206.81
<b>Total Supplies</b>	<b>\$215,584.24</b>	<b>\$449,733.45</b>	<b>\$1,418,034.12</b>	<b>\$2,083,351.81</b>
<b>700 <u>Property</u></b>				
752 Capital Equipment – Original and Additional		33,826.91		33,826.91
<b>Total Property</b>		<b>\$33,826.91</b>		<b>\$33,826.91</b>
<b>800 <u>Other Objects</u></b>				
810 Dues and Fees	967.30	133,278.14		134,245.44
890 Miscellaneous Expenditures	13.42	2,223.08	2,247.00	4,483.50
<b>Total Other Objects</b>	<b>\$980.72</b>	<b>\$135,501.22</b>	<b>\$2,247.00</b>	<b>\$138,728.94</b>
<b>Total 1100 Regular Programs – Elementary / Secondary</b>	<b>\$26,475,236.31</b>	<b>\$32,823,369.57</b>	<b>\$4,467,734.27</b>	<b>\$63,766,340.15</b>

LEA : 112679002     York City SD

Printed 11/20/2020 9:07:42 AM

General Fund (10)

1110 Regular Programs

	Elementary	Secondary	Federal	Total
<b>100 <u>Personnel Services – Salaries</u></b>				
100 Personnel Services – Salaries	14,854,603.78	8,264,608.05		23,119,211.83
<b>Total Personnel Services – Salaries</b>	<b>\$14,854,603.78</b>	<b>\$8,264,608.05</b>		<b>\$23,119,211.83</b>
<b>200 <u>Personnel Services – Employee Benefits</u></b>				
210 Group Insurance – Contracted Provider	3,900,828.29	1,356,403.11		5,257,231.40
220 Social Security Contributions	1,115,308.56	620,218.88		1,735,527.44
230 PSERS Retirement Contributions	5,114,352.68	3,394,661.80		8,509,014.48
250 Unemployment Compensation	5,868.45	3,339.04		9,207.49
260 Workers' Compensation	266,538.72	8,946.73		275,485.45
<b>Total Personnel Services – Employee Benefits</b>	<b>\$10,402,896.70</b>	<b>\$5,383,569.56</b>		<b>\$15,786,466.26</b>
<b>300 <u>Purchased Professional and Technical Services</u></b>				
329 Professional Educational Services – Other	4,019.12	1,191,091.35		1,195,110.47
330 Other Professional Services	681,197.65	582,628.49		1,263,826.14
<b>Total Purchased Professional and Technical Services</b>	<b>\$685,216.77</b>	<b>\$1,773,719.84</b>		<b>\$2,458,936.61</b>
<b>400 <u>Purchased Property Services</u></b>				
410 Cleaning Services		284.75		284.75
430 Repairs and Maintenance Services	8,209.64	3,799.97		12,009.61
<b>Total Purchased Property Services</b>	<b>\$8,209.64</b>	<b>\$4,084.72</b>		<b>\$12,294.36</b>
<b>500 <u>Other Purchased Services</u></b>				
510 Student Transportation Services	4,403.73	6,423.42		10,827.15
561 Tuition To Other School Districts Within the State	36,197.35	68,616.13		104,813.48
562 Tuition To Pennsylvania Charter Schools	100,016.24	16,569,356.70		16,669,372.94
568 Tuition To Private Residential Rehabilitative Institutions (PRRI) [In-State] and Detention Centers	103,745.46	92,200.05		195,945.51
580 Travel		21,332.30		21,332.30
594 IU Payment By Withholding for Institutionalized Children’s Programs – Special Classes	63,381.68	20,397.22		83,778.90
<b>Total Other Purchased Services</b>	<b>\$307,744.46</b>	<b>\$16,778,325.82</b>		<b>\$17,086,070.28</b>
<b>600 <u>Supplies</u></b>				
610 General Supplies	75,452.78	391,487.50		466,940.28
640 Books and Periodicals	140,131.46	58,245.95		198,377.41
<b>Total Supplies</b>	<b>\$215,584.24</b>	<b>\$449,733.45</b>		<b>\$665,317.69</b>
<b>700 <u>Property</u></b>				
752 Capital Equipment – Original and Additional		33,826.91		33,826.91
<b>Total Property</b>		<b>\$33,826.91</b>		<b>\$33,826.91</b>
<b>800 <u>Other Objects</u></b>				
810 Dues and Fees	967.30	133,278.14		134,245.44
890 Miscellaneous Expenditures	13.42	2,223.08		2,236.50
<b>Total Other Objects</b>	<b>\$980.72</b>	<b>\$135,501.22</b>		<b>\$136,481.94</b>
<b>Total 1110 Regular Programs</b>	<b>\$26,475,236.31</b>	<b>\$32,823,369.57</b>		<b>\$59,298,605.88</b>

LEA : 112679002      York City SD

Printed 11/20/2020 9:07:42 AM

General Fund (10)				
1190 Federally-Funded Regular Programs	<u>Elementary</u>	<u>Secondary</u>	<u>Federal</u>	<u>Total</u>
100 <u>Personnel Services – Salaries</u>				
100 Personnel Services – Salaries			1,750,501.93	1,750,501.93
Total Personnel Services – Salaries			\$1,750,501.93	\$1,750,501.93
200 <u>Personnel Services – Employee Benefits</u>				
210 Group Insurance – Contracted Provider			459,630.82	459,630.82
220 Social Security Contributions			131,006.94	131,006.94
230 PSERS Retirement Contributions			162,745.45	162,745.45
250 Unemployment Compensation			825.21	825.21
260 Workers' Compensation			20,847.69	20,847.69
Total Personnel Services – Employee Benefits			\$775,056.11	\$775,056.11
300 <u>Purchased Professional and Technical Services</u>				
329 Professional Educational Services – Other			521,895.11	521,895.11
Total Purchased Professional and Technical Services			\$521,895.11	\$521,895.11
600 <u>Supplies</u>				
610 General Supplies			816,789.72	816,789.72
630 Food			2,415.00	2,415.00
640 Books and Periodicals			598,829.40	598,829.40
Total Supplies			\$1,418,034.12	\$1,418,034.12
800 <u>Other Objects</u>				
890 Miscellaneous Expenditures			2,247.00	2,247.00
Total Other Objects			\$2,247.00	\$2,247.00
Total 1190 Federally-Funded Regular Programs			\$4,467,734.27	\$4,467,734.27

LEA : 112679002      York City SD

Printed 11/20/2020 9:07:42 AM

General Fund (10)

1200 Special Programs – Elementary / Secondary	Elementary	Secondary	Federal	Total
<b>100 Personnel Services – Salaries</b>				
100 Personnel Services – Salaries	6,800,518.42	2,109,121.08		8,909,639.50
<b>Total Personnel Services – Salaries</b>	<b>\$6,800,518.42</b>	<b>\$2,109,121.08</b>		<b>\$8,909,639.50</b>
<b>200 Personnel Services – Employee Benefits</b>				
210 Group Insurance – Contracted Provider	2,186,294.62	652,625.93		2,838,920.55
220 Social Security Contributions	509,861.54	156,718.44		666,579.98
230 PSERS Retirement Contributions	2,325,213.24	712,800.03		3,038,013.27
250 Unemployment Compensation	4,017.46	938.05		4,955.51
260 Workers' Compensation	122,072.26	(8,223.54)		113,848.72
<b>Total Personnel Services – Employee Benefits</b>	<b>\$5,147,459.12</b>	<b>\$1,514,858.91</b>		<b>\$6,662,318.03</b>
<b>300 Purchased Professional and Technical Services</b>				
322 Professional Educational Services – lus	399,553.39		686,266.26	1,085,819.65
329 Professional Educational Services – Other	159.70	26,457.30		26,617.00
330 Other Professional Services	2.38	393.87		396.25
<b>Total Purchased Professional and Technical Services</b>	<b>\$399,715.47</b>	<b>\$26,851.17</b>	<b>\$686,266.26</b>	<b>\$1,112,832.90</b>
<b>500 Other Purchased Services</b>				
561 Tuition To Other School Districts Within the State	22,776.37	552,489.09		575,265.46
562 Tuition To Pennsylvania Charter Schools	47,939.81	7,942,028.36		7,989,968.17
568 Tuition To Private Residential Rehabilitative Institutions (PRRI) [In-State] and Detention Centers	182,418.71	698,124.70		880,543.41
594 IU Payment By Withholding for Institutionalized Children's Programs – Special Classes	41,981.67	265,628.07		307,609.74
<b>Total Other Purchased Services</b>	<b>\$295,116.56</b>	<b>\$9,458,270.22</b>		<b>\$9,753,386.78</b>
<b>600 Supplies</b>				
610 General Supplies	20.07	3,325.31	61,655.13	65,000.51
<b>Total Supplies</b>	<b>\$20.07</b>	<b>\$3,325.31</b>	<b>\$61,655.13</b>	<b>\$65,000.51</b>
<b>Total 1200 Special Programs – Elementary / Secondary</b>	<b>\$12,642,829.64</b>	<b>\$13,112,426.69</b>	<b>\$747,921.39</b>	<b>\$26,503,177.72</b>



LEA : 112679002      York City SD

Printed 11/20/2020 9:07:42 AM

<b>General Fund (10)</b>				
<b>1210 Life Skills Support</b>	<b><u>Elementary</u></b>	<b><u>Secondary</u></b>	<b><u>Federal</u></b>	<b><u>Total</u></b>
<b>100 <u>Personnel Services – Salaries</u></b>				
100 Personnel Services – Salaries	996,766.99	387,708.20		1,384,475.19
<b>Total Personnel Services – Salaries</b>	<b>\$996,766.99</b>	<b>\$387,708.20</b>		<b>\$1,384,475.19</b>
<b>200 <u>Personnel Services – Employee Benefits</u></b>				
210 Group Insurance – Contracted Provider	251,829.49	127,312.30		379,141.79
220 Social Security Contributions	75,119.62	28,642.54		103,762.16
230 PSERS Retirement Contributions	341,782.85	132,192.54		473,975.39
250 Unemployment Compensation	458.34	162.14		620.48
260 Workers' Compensation	17,891.03	(1,347.96)		16,543.07
<b>Total Personnel Services – Employee Benefits</b>	<b>\$687,081.33</b>	<b>\$286,961.56</b>		<b>\$974,042.89</b>
<b>300 <u>Purchased Professional and Technical Services</u></b>				
322 Professional Educational Services – lus	25,090.91		197,060.30	222,151.21
<b>Total Purchased Professional and Technical Services</b>	<b>\$25,090.91</b>		<b>\$197,060.30</b>	<b>\$222,151.21</b>
<b>500 <u>Other Purchased Services</u></b>				
561 Tuition To Other School Districts Within the State	21,149.76	283,012.89		304,162.65
568 Tuition To Private Residential Rehabilitative Institutions (PRRI) [In-State] and Detention Centers	182,418.71	698,124.70		880,543.41
<b>Total Other Purchased Services</b>	<b>\$203,568.47</b>	<b>\$981,137.59</b>		<b>\$1,184,706.06</b>
<b>600 <u>Supplies</u></b>				
610 General Supplies	9.00	1,490.86	11,982.26	13,482.12
<b>Total Supplies</b>	<b>\$9.00</b>	<b>\$1,490.86</b>	<b>\$11,982.26</b>	<b>\$13,482.12</b>
<b>Total 1210 Life Skills Support</b>	<b>\$1,912,516.70</b>	<b>\$1,657,298.21</b>	<b>\$209,042.56</b>	<b>\$3,778,857.47</b>

LEA : 112679002      York City SD

Printed 11/20/2020 9:07:42 AM

General Fund (10)

1220 Sensory Support	Elementary	Secondary	Federal	Total
<b>100 Personnel Services – Salaries</b>				
100 Personnel Services – Salaries	1,034,560.51	94,617.54		1,129,178.05
<b>Total Personnel Services – Salaries</b>	<b>\$1,034,560.51</b>	<b>\$94,617.54</b>		<b>\$1,129,178.05</b>
<b>200 Personnel Services – Employee Benefits</b>				
210 Group Insurance – Contracted Provider	252,840.08	19,245.48		272,085.56
220 Social Security Contributions	77,789.55	7,149.34		84,938.89
230 PSERS Retirement Contributions	352,572.24	32,459.20		385,031.44
250 Unemployment Compensation	476.07	28.00		504.07
260 Workers' Compensation	18,525.38	(4,604.11)		13,921.27
<b>Total Personnel Services – Employee Benefits</b>	<b>\$702,203.32</b>	<b>\$54,277.91</b>		<b>\$756,481.23</b>
<b>300 Purchased Professional and Technical Services</b>				
322 Professional Educational Services – lus	374,462.48		37,570.39	412,032.87
330 Other Professional Services	2.38	393.87		396.25
<b>Total Purchased Professional and Technical Services</b>	<b>\$374,464.86</b>	<b>\$393.87</b>	<b>\$37,570.39</b>	<b>\$412,429.12</b>
<b>Total 1220 Sensory Support</b>	<b>\$2,111,228.69</b>	<b>\$149,289.32</b>	<b>\$37,570.39</b>	<b>\$2,298,088.40</b>

LEA : 112679002     York City SD

Printed 11/20/2020 9:07:42 AM

General Fund (10)				
1230 Emotional Support	<u>Elementary</u>	<u>Secondary</u>	<u>Federal</u>	<u>Total</u>
100 <u>Personnel Services – Salaries</u>				
100 Personnel Services – Salaries	1,711,505.74	322,377.92		2,033,883.66
<b>Total Personnel Services – Salaries</b>	<b>\$1,711,505.74</b>	<b>\$322,377.92</b>		<b>\$2,033,883.66</b>
200 <u>Personnel Services – Employee Benefits</u>				
210 Group Insurance – Contracted Provider	696,686.50	71,092.65		767,779.15
220 Social Security Contributions	127,740.89	23,820.24		151,561.13
230 PSERS Retirement Contributions	585,003.03	105,452.44		690,455.47
250 Unemployment Compensation	1,138.11	133.96		1,272.07
260 Workers' Compensation	30,760.52	(2,032.88)		28,727.64
<b>Total Personnel Services – Employee Benefits</b>	<b>\$1,441,329.05</b>	<b>\$198,466.41</b>		<b>\$1,639,795.46</b>
300 <u>Purchased Professional and Technical Services</u>				
322 Professional Educational Services – lus			257,141.68	257,141.68
329 Professional Educational Services – Other	159.70	26,457.30		26,617.00
<b>Total Purchased Professional and Technical Services</b>	<b>\$159.70</b>	<b>\$26,457.30</b>	<b>\$257,141.68</b>	<b>\$283,758.68</b>
600 <u>Supplies</u>				
610 General Supplies			30,312.65	30,312.65
<b>Total Supplies</b>			<b>\$30,312.65</b>	<b>\$30,312.65</b>
<b>Total 1230 Emotional Support</b>	<b>\$3,152,994.49</b>	<b>\$547,301.63</b>	<b>\$287,454.33</b>	<b>\$3,987,750.45</b>

LEA : 112679002      York City SD

Printed 11/20/2020 9:07:42 AM

General Fund (10)				
1240 Academic Support	Elementary	Secondary	Federal	Total
100 Personnel Services – Salaries				
100 Personnel Services – Salaries	2,849,118.42	1,145,474.01		3,994,592.43
Total Personnel Services – Salaries	\$2,849,118.42	\$1,145,474.01		\$3,994,592.43
200 Personnel Services – Employee Benefits				
210 Group Insurance – Contracted Provider	928,017.01	309,533.45		1,237,550.46
220 Social Security Contributions	213,534.75	85,542.12		299,076.87
230 PSERS Retirement Contributions	974,338.42	388,306.26		1,362,644.68
250 Unemployment Compensation	1,864.25	478.07		2,342.32
260 Workers' Compensation	51,141.03	(3,099.80)		48,041.23
Total Personnel Services – Employee Benefits	\$2,168,895.46	\$780,760.10		\$2,949,655.56
500 Other Purchased Services				
561 Tuition To Other School Districts Within the State	34.25	5,674.75		5,709.00
Total Other Purchased Services	\$34.25	\$5,674.75		\$5,709.00
Total 1240 Academic Support	\$5,018,048.13	\$1,931,908.86		\$6,949,956.99

LEA : 112679002     York City SD

Printed 11/20/2020 9:07:42 AM

General Fund (10)

1241 Learning Support – Public	<u>Elementary</u>	<u>Secondary</u>	<u>Federal</u>	<u>Total</u>
<b>100 <u>Personnel Services – Salaries</u></b>				
100 Personnel Services – Salaries	2,758,951.42	1,145,474.01		3,904,425.43
<b>Total Personnel Services – Salaries</b>	<b>\$2,758,951.42</b>	<b>\$1,145,474.01</b>		<b>\$3,904,425.43</b>
<b>200 <u>Personnel Services – Employee Benefits</u></b>				
210 Group Insurance – Contracted Provider	902,860.72	309,533.45		1,212,394.17
220 Social Security Contributions	206,712.01	85,542.12		292,254.13
230 PSERS Retirement Contributions	943,420.09	388,306.26		1,331,726.35
250 Unemployment Compensation	1,836.25	478.07		2,314.32
260 Workers' Compensation	49,518.11	(3,099.80)		46,418.31
<b>Total Personnel Services – Employee Benefits</b>	<b>\$2,104,347.18</b>	<b>\$780,760.10</b>		<b>\$2,885,107.28</b>
<b>500 <u>Other Purchased Services</u></b>				
561 Tuition To Other School Districts Within the State	34.25	5,674.75		5,709.00
<b>Total Other Purchased Services</b>	<b>\$34.25</b>	<b>\$5,674.75</b>		<b>\$5,709.00</b>
<b>Total 1241 Learning Support – Public</b>	<b>\$4,863,332.85</b>	<b>\$1,931,908.86</b>		<b>\$6,795,241.71</b>

LEA : 112679002     York City SD

Printed 11/20/2020 9:07:42 AM

General Fund (10)

1243 Gifted Support	<u>Elementary</u>	<u>Secondary</u>	<u>Federal</u>	<u>Total</u>
100 <u>Personnel Services – Salaries</u>				
100 Personnel Services – Salaries	90,167.00			90,167.00
<b>Total Personnel Services – Salaries</b>	<b>\$90,167.00</b>			<b>\$90,167.00</b>
200 <u>Personnel Services – Employee Benefits</u>				
210 Group Insurance – Contracted Provider	25,156.29			25,156.29
220 Social Security Contributions	6,822.74			6,822.74
230 PSERS Retirement Contributions	30,918.33			30,918.33
250 Unemployment Compensation	28.00			28.00
260 Workers' Compensation	1,622.92			1,622.92
<b>Total Personnel Services – Employee Benefits</b>	<b>\$64,548.28</b>			<b>\$64,548.28</b>
<b>Total 1243 Gifted Support</b>	<b>\$154,715.28</b>			<b>\$154,715.28</b>

LEA : 112679002      York City SD

Printed 11/20/2020 9:07:42 AM

<b>General Fund (10)</b>				
<b>1270 Multi-Handicapped Support</b>	<b><u>Elementary</u></b>	<b><u>Secondary</u></b>	<b><u>Federal</u></b>	<b><u>Total</u></b>
<b>100 <u>Personnel Services – Salaries</u></b>				
100 Personnel Services – Salaries	208,490.28	146,274.37		354,764.65
<b>Total Personnel Services – Salaries</b>	<b>\$208,490.28</b>	<b>\$146,274.37</b>		<b>\$354,764.65</b>
<b>200 <u>Personnel Services – Employee Benefits</u></b>				
210 Group Insurance – Contracted Provider	55,469.53	125,442.05		180,911.58
220 Social Security Contributions	15,670.91	10,599.53		26,270.44
230 PSERS Retirement Contributions	71,490.48	50,045.36		121,535.84
250 Unemployment Compensation	80.69	135.88		216.57
260 Workers' Compensation	3,752.92	2,633.14		6,386.06
<b>Total Personnel Services – Employee Benefits</b>	<b>\$146,464.53</b>	<b>\$188,855.96</b>		<b>\$335,320.49</b>
<b>300 <u>Purchased Professional and Technical Services</u></b>				
322 Professional Educational Services – lus			81,632.41	81,632.41
<b>Total Purchased Professional and Technical Services</b>			<b>\$81,632.41</b>	<b>\$81,632.41</b>
<b>600 <u>Supplies</u></b>				
610 General Supplies	11.07	1,834.45		1,845.52
<b>Total Supplies</b>	<b>\$11.07</b>	<b>\$1,834.45</b>		<b>\$1,845.52</b>
<b>Total 1270 Multi-Handicapped Support</b>	<b>\$354,965.88</b>	<b>\$336,964.78</b>	<b>\$81,632.41</b>	<b>\$773,563.07</b>

LEA : 112679002    York City SD

Printed 11/20/2020 9:07:42 AM

General Fund (10)

1280 Early Intervention Support

	<u>Elementary</u>	<u>Secondary</u>	<u>Federal</u>	<u>Total</u>
<b>300 <u>Purchased Professional and Technical Services</u></b>				
322 Professional Educational Services – lus			45,800.00	45,800.00
<b>Total Purchased Professional and Technical Services</b>			<b>\$45,800.00</b>	<b>\$45,800.00</b>
<b>600 <u>Supplies</u></b>				
610 General Supplies			19,360.22	19,360.22
<b>Total Supplies</b>			<b>\$19,360.22</b>	<b>\$19,360.22</b>
<b>Total 1280 Early Intervention Support</b>			<b>\$65,160.22</b>	<b>\$65,160.22</b>



LEA : 112679002      York City SD

Printed 11/20/2020 9:07:42 AM

General Fund (10)				
1290 Special Programs - Other Support	<u>Elementary</u>	<u>Secondary</u>	<u>Federal</u>	<u>Total</u>
100 <u>Personnel Services – Salaries</u>				
100 Personnel Services – Salaries	76.48	12,669.04		12,745.52
<b>Total Personnel Services – Salaries</b>	<b>\$76.48</b>	<b>\$12,669.04</b>		<b>\$12,745.52</b>
200 <u>Personnel Services – Employee Benefits</u>				
210 Group Insurance – Contracted Provider	1,452.01			1,452.01
220 Social Security Contributions	5.82	964.67		970.49
230 PSERS Retirement Contributions	26.22	4,344.23		4,370.45
260 Workers' Compensation	1.38	228.07		229.45
<b>Total Personnel Services – Employee Benefits</b>	<b>\$1,485.43</b>	<b>\$5,536.97</b>		<b>\$7,022.40</b>
300 <u>Purchased Professional and Technical Services</u>				
322 Professional Educational Services – Ius			67,061.48	67,061.48
<b>Total Purchased Professional and Technical Services</b>			<b>\$67,061.48</b>	<b>\$67,061.48</b>
500 <u>Other Purchased Services</u>				
561 Tuition To Other School Districts Within the State	1,592.36	263,801.45		265,393.81
562 Tuition To Pennsylvania Charter Schools	47,939.81	7,942,028.36		7,989,968.17
594 IU Payment By Withholding for Institutionalized Children's Programs – Special Classes	41,981.67	265,628.07		307,609.74
<b>Total Other Purchased Services</b>	<b>\$91,513.84</b>	<b>\$8,471,457.88</b>		<b>\$8,562,971.72</b>
<b>Total 1290 Special Programs - Other Support</b>	<b>\$93,075.75</b>	<b>\$8,489,663.89</b>	<b>\$67,061.48</b>	<b>\$8,649,801.12</b>

LEA : 112679002    York City SD

Printed 11/20/2020 9:07:42 AM

General Fund (10)

1300 Vocational Education

	<u>Elementary</u>	<u>Secondary</u>	<u>Federal</u>	<u>Total</u>
500 <u>Other Purchased Services</u>				
564 Tuition To Career and Technology Centers		4,978,697.62		4,978,697.62
599 Other Miscellaneous Purchased Services		124,708.54		124,708.54
<b>Total Other Purchased Services</b>		<b>\$5,103,406.16</b>		<b>\$5,103,406.16</b>
<b>Total 1300 Vocational Education</b>		<b>\$5,103,406.16</b>		<b>\$5,103,406.16</b>

LEA : 112679002     York City SD

Printed 11/20/2020 9:07:42 AM

<b>General Fund (10)</b>				
<b>1400 Other Instructional Programs – Elementary / Secondary</b>	<b><u>Elementary</u></b>	<b><u>Secondary</u></b>	<b><u>Federal</u></b>	<b><u>Total</u></b>
<b>100 <u>Personnel Services – Salaries</u></b>				
100 Personnel Services – Salaries	10,320.99	131,601.58	553,048.26	694,970.83
<b>Total Personnel Services – Salaries</b>	<b>\$10,320.99</b>	<b>\$131,601.58</b>	<b>\$553,048.26</b>	<b>\$694,970.83</b>
<b>200 <u>Personnel Services – Employee Benefits</u></b>				
210 Group Insurance – Contracted Provider		295.40	25,389.30	25,684.70
220 Social Security Contributions	782.20	10,082.72	42,100.00	52,964.92
230 PSERS Retirement Contributions	1,568.10	38,850.39	74,721.17	115,139.66
250 Unemployment Compensation	18.17	70.68	1,055.09	1,143.94
260 Workers' Compensation	185.78	2,368.97	9,954.87	12,509.62
<b>Total Personnel Services – Employee Benefits</b>	<b>\$2,554.25</b>	<b>\$51,668.16</b>	<b>\$153,220.43</b>	<b>\$207,442.84</b>
<b>300 <u>Purchased Professional and Technical Services</u></b>				
329 Professional Educational Services – Other	5,041.71	835,242.99		840,284.70
<b>Total Purchased Professional and Technical Services</b>	<b>\$5,041.71</b>	<b>\$835,242.99</b>		<b>\$840,284.70</b>
<b>500 <u>Other Purchased Services</u></b>				
561 Tuition To Other School Districts Within the State	117,535.08	191,830.39		309,365.47
569 Tuition – Other		67,250.00		67,250.00
<b>Total Other Purchased Services</b>	<b>\$117,535.08</b>	<b>\$259,080.39</b>		<b>\$376,615.47</b>
<b>600 <u>Supplies</u></b>				
610 General Supplies			19,723.55	19,723.55
<b>Total Supplies</b>			<b>\$19,723.55</b>	<b>\$19,723.55</b>
<b>Total 1400 Other Instructional Programs – Elementary / Secondary</b>	<b>\$135,452.03</b>	<b>\$1,277,593.12</b>	<b>\$725,992.24</b>	<b>\$2,139,037.39</b>

LEA : 112679002     York City SD

Printed 11/20/2020 9:07:42 AM

General Fund (10)

1420 Summer School

	<u>Elementary</u>	<u>Secondary</u>	<u>Federal</u>	<u>Total</u>
<b>100 <u>Personnel Services – Salaries</u></b>				
100 Personnel Services – Salaries			63,096.26	63,096.26
<b>Total Personnel Services – Salaries</b>			<b>\$63,096.26</b>	<b>\$63,096.26</b>
<b>200 <u>Personnel Services – Employee Benefits</u></b>				
220 Social Security Contributions			4,814.30	4,814.30
230 PSERS Retirement Contributions			20,620.53	20,620.53
260 Workers’ Compensation			1,135.76	1,135.76
<b>Total Personnel Services – Employee Benefits</b>			<b>\$26,570.59</b>	<b>\$26,570.59</b>
<b>Total 1420 Summer School</b>			<b>\$89,666.85</b>	<b>\$89,666.85</b>

LEA : 112679002     York City SD

Printed 11/20/2020 9:07:42 AM

General Fund (10)

1430 Homebound Instruction	<u>Elementary</u>	<u>Secondary</u>	<u>Federal</u>	<u>Total</u>
<b>100 <u>Personnel Services – Salaries</u></b>				
100 Personnel Services – Salaries	10,315.96	22,138.55		32,454.51
<b>Total Personnel Services – Salaries</b>	<b>\$10,315.96</b>	<b>\$22,138.55</b>		<b>\$32,454.51</b>
<b>200 <u>Personnel Services – Employee Benefits</u></b>				
220 Social Security Contributions	781.82	1,673.60		2,455.42
230 PSERS Retirement Contributions	1,568.10	5,348.57		6,916.67
250 Unemployment Compensation	18.17	9.74		27.91
260 Workers' Compensation	185.69	398.48		584.17
<b>Total Personnel Services – Employee Benefits</b>	<b>\$2,553.78</b>	<b>\$7,430.39</b>		<b>\$9,984.17</b>
<b>Total 1430 Homebound Instruction</b>	<b>\$12,869.74</b>	<b>\$29,568.94</b>		<b>\$42,438.68</b>

LEA : 112679002     York City SD

Printed 11/20/2020 9:07:42 AM

General Fund (10)

1440 Alternative Regular Education Programs	<u>Elementary</u>	<u>Secondary</u>	<u>Federal</u>	<u>Total</u>
300 <u>Purchased Professional and Technical Services</u>				
329 Professional Educational Services – Other	5,041.71	835,242.99		840,284.70
Total Purchased Professional and Technical Services	\$5,041.71	\$835,242.99		\$840,284.70
500 <u>Other Purchased Services</u>				
561 Tuition To Other School Districts Within the State	117,535.08	191,830.39		309,365.47
Total Other Purchased Services	\$117,535.08	\$191,830.39		\$309,365.47
Total 1440 Alternative Regular Education Programs	\$122,576.79	\$1,027,073.38		\$1,149,650.17

LEA : 112679002     York City SD

Printed 11/20/2020 9:07:42 AM

General Fund (10)

1441 Adjudicated / Court-Placed Programs	<u>Elementary</u>	<u>Secondary</u>	<u>Federal</u>	<u>Total</u>
500 <u>Other Purchased Services</u>				
561 Tuition To Other School Districts Within the State	117,535.08	191,830.39		309,365.47
Total Other Purchased Services	\$117,535.08	\$191,830.39		\$309,365.47
Total 1441 Adjudicated / Court-Placed Programs	\$117,535.08	\$191,830.39		\$309,365.47

LEA : 112679002     York City SD

Printed 11/20/2020 9:07:42 AM

General Fund (10)

1442 Alternative Education Programs	<u>Elementary</u>	<u>Secondary</u>	<u>Federal</u>	<u>Total</u>
300 <u>Purchased Professional and Technical Services</u>				
329 Professional Educational Services – Other	5,041.71	835,242.99		840,284.70
Total Purchased Professional and Technical Services	\$5,041.71	\$835,242.99		\$840,284.70
Total 1442 Alternative Education Programs	\$5,041.71	\$835,242.99		\$840,284.70



LEA : 112679002     York City SD

Printed 11/20/2020 9:07:42 AM

General Fund (10)

1450 Instructional Programs Outside the Established School Day

	<u>Elementary</u>	<u>Secondary</u>	<u>Federal</u>	<u>Total</u>
<b>100 <u>Personnel Services – Salaries</u></b>				
100 Personnel Services – Salaries			442,523.07	442,523.07
<b>Total Personnel Services – Salaries</b>			<b>\$442,523.07</b>	<b>\$442,523.07</b>
<b>200 <u>Personnel Services – Employee Benefits</u></b>				
210 Group Insurance – Contracted Provider			25,269.75	25,269.75
220 Social Security Contributions			33,662.33	33,662.33
230 PSERS Retirement Contributions			37,837.36	37,837.36
250 Unemployment Compensation			1,032.09	1,032.09
260 Workers' Compensation			7,965.28	7,965.28
<b>Total Personnel Services – Employee Benefits</b>			<b>\$105,766.81</b>	<b>\$105,766.81</b>
<b>600 <u>Supplies</u></b>				
610 General Supplies			19,723.55	19,723.55
<b>Total Supplies</b>			<b>\$19,723.55</b>	<b>\$19,723.55</b>
<b>Total 1450 Instructional Programs Outside the Established School Day</b>			<b>\$568,013.43</b>	<b>\$568,013.43</b>

LEA : 112679002     York City SD

Printed 11/20/2020 9:07:42 AM

General Fund (10)

1490 Additional Other Instructional Programs

	<u>Elementary</u>	<u>Secondary</u>	<u>Federal</u>	<u>Total</u>
<b>100 <u>Personnel Services – Salaries</u></b>				
100 Personnel Services – Salaries	5.03	109,463.03	47,428.93	156,896.99
<b>Total Personnel Services – Salaries</b>	<b>\$5.03</b>	<b>\$109,463.03</b>	<b>\$47,428.93</b>	<b>\$156,896.99</b>
<b>200 <u>Personnel Services – Employee Benefits</u></b>				
210 Group Insurance – Contracted Provider		295.40	119.55	414.95
220 Social Security Contributions	0.38	8,409.12	3,623.37	12,032.87
230 PSERS Retirement Contributions		33,501.82	16,263.28	49,765.10
250 Unemployment Compensation		60.94	23.00	83.94
260 Workers' Compensation	0.09	1,970.49	853.83	2,824.41
<b>Total Personnel Services – Employee Benefits</b>	<b>\$0.47</b>	<b>\$44,237.77</b>	<b>\$20,883.03</b>	<b>\$65,121.27</b>
<b>500 <u>Other Purchased Services</u></b>				
569 Tuition – Other		67,250.00		67,250.00
<b>Total Other Purchased Services</b>		<b>\$67,250.00</b>		<b>\$67,250.00</b>
<b>Total 1490 Additional Other Instructional Programs</b>	<b>\$5.50</b>	<b>\$220,950.80</b>	<b>\$68,311.96</b>	<b>\$289,268.26</b>

LEA : 112679002    York City SD

Printed 11/20/2020 9:07:42 AM

General Fund (10)

1500 Nonpublic School Programs

	<u>Elementary</u>	<u>Secondary</u>	<u>Federal</u>	<u>Total</u>
<b>300 <u>Purchased Professional and Technical Services</u></b>				
322 Professional Educational Services – Ius			57,270.06	57,270.06
329 Professional Educational Services – Other			138,162.00	138,162.00
<b>Total Purchased Professional and Technical Services</b>			<b>\$195,432.06</b>	<b>\$195,432.06</b>
<b>600 <u>Supplies</u></b>				
610 General Supplies			4,949.14	4,949.14
<b>Total Supplies</b>			<b>\$4,949.14</b>	<b>\$4,949.14</b>
<b>Total 1500 Nonpublic School Programs</b>			<b>\$200,381.20</b>	<b>\$200,381.20</b>

LEA : 112679002     York City SD

Printed 11/20/2020 9:07:42 AM

<b>General Fund (10)</b>				
<b>1600 Adult Education Programs</b>	<b><u>Elementary</u></b>	<b><u>Secondary</u></b>	<b><u>Federal</u></b>	<b><u>Total</u></b>
<b>100 <u>Personnel Services – Salaries</u></b>				
100 Personnel Services – Salaries				70,520.42
<b>Total Personnel Services – Salaries</b>				<b>\$70,520.42</b>
<b>200 <u>Personnel Services – Employee Benefits</u></b>				
210 Group Insurance – Contracted Provider				8,851.00
220 Social Security Contributions				5,348.95
230 PSERS Retirement Contributions				23,905.65
250 Unemployment Compensation				28.01
260 Workers' Compensation				1,269.49
<b>Total Personnel Services – Employee Benefits</b>				<b>\$39,403.10</b>
<b>300 <u>Purchased Professional and Technical Services</u></b>				
329 Professional Educational Services – Other				192,078.48
<b>Total Purchased Professional and Technical Services</b>				<b>\$192,078.48</b>
<b>500 <u>Other Purchased Services</u></b>				
580 Travel				650.00
<b>Total Other Purchased Services</b>				<b>\$650.00</b>
<b>600 <u>Supplies</u></b>				
610 General Supplies				2,331.16
<b>Total Supplies</b>				<b>\$2,331.16</b>
<b>Total 1600 Adult Education Programs</b>				<b>\$304,983.16</b>

LEA : 112679002      York City SD

Printed 11/20/2020 9:07:42 AM

<b>General Fund (10)</b>				
<b>1800 Pre-Kindergarten</b>	<b><u>Elementary</u></b>	<b><u>Secondary</u></b>	<b><u>Federal</u></b>	<b><u>Total</u></b>
<b>100 <u>Personnel Services – Salaries</u></b>				
100 Personnel Services – Salaries				168,956.38
<b>Total Personnel Services – Salaries</b>				<b>\$168,956.38</b>
<b>200 <u>Personnel Services – Employee Benefits</u></b>				
210 Group Insurance – Contracted Provider				44,055.31
220 Social Security Contributions				12,586.11
230 PSERS Retirement Contributions				57,391.83
250 Unemployment Compensation				56.00
260 Workers' Compensation				3,041.30
291 Other Retirement Plans				923.00
<b>Total Personnel Services – Employee Benefits</b>				<b>\$118,053.55</b>
<b>300 <u>Purchased Professional and Technical Services</u></b>				
329 Professional Educational Services – Other				24,397.88
330 Other Professional Services				22,833.00
<b>Total Purchased Professional and Technical Services</b>				<b>\$47,230.88</b>
<b>400 <u>Purchased Property Services</u></b>				
410 Cleaning Services				10,000.00
430 Repairs and Maintenance Services				55,100.00
<b>Total Purchased Property Services</b>				<b>\$65,100.00</b>
<b>600 <u>Supplies</u></b>				
610 General Supplies				202,508.70
620 Energy				30,000.00
630 Food				10,444.85
<b>Total Supplies</b>				<b>\$242,953.55</b>
<b>800 <u>Other Objects</u></b>				
890 Miscellaneous Expenditures				2,001,515.10
<b>Total Other Objects</b>				<b>\$2,001,515.10</b>
<b>Total 1800 Pre-Kindergarten</b>				<b>\$2,643,809.46</b>

LEA : 112679002    York City SD

Printed 11/20/2020 9:07:42 AM

General Fund (10)				
1801 Pre-K Instruction	<u>Elementary</u>	<u>Secondary</u>	<u>Federal</u>	<u>Total</u>
300 <u>Purchased Professional and Technical Services</u>				
330 Other Professional Services				22,833.00
Total Purchased Professional and Technical Services				\$22,833.00
600 <u>Supplies</u>				
610 General Supplies				189,904.92
Total Supplies				\$189,904.92
Total 1801 Pre-K Instruction				\$212,737.92

LEA : 112679002      York City SD

Printed 11/20/2020 9:07:42 AM

General Fund (10)					
1802 Pre-K Administrative Support		<u>Elementary</u>	<u>Secondary</u>	<u>Federal</u>	<u>Total</u>
<b>100 <u>Personnel Services – Salaries</u></b>					
100 Personnel Services – Salaries					168,956.38
<b>Total Personnel Services – Salaries</b>					<b>\$168,956.38</b>
<b>200 <u>Personnel Services – Employee Benefits</u></b>					
210 Group Insurance – Contracted Provider					44,055.31
220 Social Security Contributions					12,586.11
230 PSERS Retirement Contributions					57,391.83
250 Unemployment Compensation					56.00
260 Workers' Compensation					3,041.30
291 Other Retirement Plans					923.00
<b>Total Personnel Services – Employee Benefits</b>					<b>\$118,053.55</b>
<b>600 <u>Supplies</u></b>					
610 General Supplies					12,603.78
<b>Total Supplies</b>					<b>\$12,603.78</b>
<b>Total 1802 Pre-K Administrative Support</b>					<b>\$299,613.71</b>

LEA : 112679002     York City SD

Printed 11/20/2020 9:07:42 AM

General Fund (10)				
1803 Pre-K Operations and Maintenance	<u>Elementary</u>	<u>Secondary</u>	<u>Federal</u>	<u>Total</u>
400 <u>Purchased Property Services</u>				
410 Cleaning Services				10,000.00
430 Repairs and Maintenance Services				55,100.00
Total Purchased Property Services				\$65,100.00
600 <u>Supplies</u>				
620 Energy				30,000.00
Total Supplies				\$30,000.00
Total 1803 Pre-K Operations and Maintenance				\$95,100.00



LEA : 112679002    York City SD

Printed 11/20/2020 9:07:42 AM

General Fund (10)				
1805 Pre-K Food Services	<u>Elementary</u>	<u>Secondary</u>	<u>Federal</u>	<u>Total</u>
600 <u>Supplies</u>				
630 Food				10,444.85
Total Supplies				\$10,444.85
Total 1805 Pre-K Food Services				\$10,444.85

LEA : 112679002     York City SD

Printed 11/20/2020 9:07:42 AM

General Fund (10)

1806 Pre-K Professional Development	<u>Elementary</u>	<u>Secondary</u>	<u>Federal</u>	<u>Total</u>
300 <u>Purchased Professional and Technical Services</u>				
329 Professional Educational Services – Other				24,397.88
Total Purchased Professional and Technical Services				\$24,397.88
Total 1806 Pre-K Professional Development				\$24,397.88

LEA : 112679002     York City SD

Printed 11/20/2020 9:07:42 AM

General Fund (10)				
1807 Pre-K Pass-Through Funds (Partners)	<u>Elementary</u>	<u>Secondary</u>	<u>Federal</u>	<u>Total</u>
800 <u>Other Objects</u>				
890 Miscellaneous Expenditures				2,001,515.10
Total Other Objects				\$2,001,515.10
Total 1807 Pre-K Pass-Through Funds (Partners)				\$2,001,515.10

LEA : 112679002      York City SD

Printed 11/20/2020 9:08:04 AM

General Fund (10)

2000 Support Services

	Total
<b>100 Personnel Services – Salaries</b>	
100 Personnel Services – Salaries	15,339,787.83
<b>Total Personnel Services – Salaries</b>	<b>\$15,339,787.83</b>
<b>200 Personnel Services – Employee Benefits</b>	
210 Group Insurance – Contracted Provider	4,342,744.14
220 Social Security Contributions	1,151,966.78
230 PSERS Retirement Contributions	5,156,649.61
240 Tuition Reimbursement	374,241.91
250 Unemployment Compensation	81,893.80
260 Workers' Compensation	221,400.56
291 Other Retirement Plans	42,094.34
<b>Total Personnel Services – Employee Benefits</b>	<b>\$11,370,991.14</b>
<b>300 Purchased Professional and Technical Services</b>	
322 Professional Educational Services – Ius	730,151.14
323 Professional Educational Services – Other Educational Agencies	12,500.00
329 Professional Educational Services – Other	2,067,272.37
330 Other Professional Services	400,184.24
350 Security / Safety Services	228,355.17
360 Employee Training and Development Services	211.50
390 Other Purchased Professional and Technical Services	21,513.00
<b>Total Purchased Professional and Technical Services</b>	<b>\$3,460,187.42</b>
<b>400 Purchased Property Services</b>	
410 Cleaning Services	117,717.83
420 Utility Services	130,591.68
430 Repairs and Maintenance Services	640,786.97
440 Rentals	262,285.03
460 Extermination Services	12,459.44
<b>Total Purchased Property Services</b>	<b>\$1,163,840.95</b>
<b>500 Other Purchased Services</b>	
510 Student Transportation Services	1,377.23
513 Contracted Carriers	288,553.21
516 Student Transportation Services From the IU	2,097,467.22
519 Student Transportation Services From Other Sources	24,825.28
520 Insurance – General	50,590.00
522 Automotive Liability Insurance	20,769.50
523 General Property and Liability Insurance	189,642.00
530 Communications	271,573.88
541 Advertising Related to Federal Grant Awards	22,114.43
542 Public Relations Related to Federal Grant Awards	459.84
549 Other Advertising/Public Relations	19,333.17
550 Printing and Binding	4,851.56
580 Travel	35,818.75
595 IU Payments By Withholding	12,354.55
599 Other Miscellaneous Purchased Services	10,880.30

LEA : 112679002     York City SD

Printed 11/20/2020 9:08:04 AM

General Fund (10)

2000 Support Services

Total

Total Other Purchased Services	\$3,050,610.92
--------------------------------	----------------

600 Supplies

610 General Supplies	1,101,437.29
620 Energy	1,051,338.46
630 Food	13,558.96
640 Books and Periodicals	55,858.73

Total Supplies	\$2,222,193.44
----------------	----------------

700 Property

752 Capital Equipment – Original and Additional	272,301.35
766 Capitalized Technology Equipment – Replacement	21,664.95

Total Property	\$293,966.30
----------------	--------------

800 Other Objects

810 Dues and Fees	161,267.00
890 Miscellaneous Expenditures	110,521.15

Total Other Objects	\$271,788.15
---------------------	--------------

Total 2000 Support Services	\$37,173,366.15
-----------------------------	-----------------

LEA : 112679002      York City SD

Printed 11/20/2020 9:08:04 AM

General Fund (10)

2100 Support Services – Students	Elementary	Secondary	Federal	Total
100 <u>Personnel Services – Salaries</u>				
100 Personnel Services – Salaries	270,595.41	655,880.95	84,514.50	2,694,947.02
<b>Total Personnel Services – Salaries</b>	<b>\$270,595.41</b>	<b>\$655,880.95</b>	<b>\$84,514.50</b>	<b>\$2,694,947.02</b>
200 <u>Personnel Services – Employee Benefits</u>				
210 Group Insurance – Contracted Provider	55,860.45	131,084.30		548,750.44
220 Social Security Contributions	19,984.27	49,215.37	6,457.30	202,390.77
230 PSERS Retirement Contributions	92,787.30	223,949.05	7,245.01	895,783.11
250 Unemployment Compensation	84.18	195.61	222.22	1,153.77
260 Workers' Compensation	4,870.55	11,806.12	1,521.29	41,401.83
291 Other Retirement Plans	8.31	1,376.29		2,307.60
<b>Total Personnel Services – Employee Benefits</b>	<b>\$173,595.06</b>	<b>\$417,626.74</b>	<b>\$15,445.82</b>	<b>\$1,691,787.52</b>
300 <u>Purchased Professional and Technical Services</u>				
322 Professional Educational Services – Ius	3,541.07	586,637.78	36,440.69	626,619.54
323 Professional Educational Services – Other Educational Agencies			12,500.00	12,500.00
329 Professional Educational Services – Other	9,249.38	954,137.62	21,045.12	987,353.82
330 Other Professional Services	4.02	665.88	2,169.00	2,838.90
<b>Total Purchased Professional and Technical Services</b>	<b>\$12,794.47</b>	<b>\$1,541,441.28</b>	<b>\$72,154.81</b>	<b>\$1,629,312.26</b>
500 <u>Other Purchased Services</u>				
510 Student Transportation Services		1,377.23		1,377.23
549 Other Advertising/Public Relations	0.82	135.60		136.42
580 Travel	14.74	2,441.63	2,466.40	4,959.13
<b>Total Other Purchased Services</b>	<b>\$15.56</b>	<b>\$3,954.46</b>	<b>\$2,466.40</b>	<b>\$6,472.78</b>
600 <u>Supplies</u>				
610 General Supplies	143.97	30,174.88	45,176.66	75,495.51
640 Books and Periodicals	21.12	3,499.34		7,496.43
<b>Total Supplies</b>	<b>\$165.09</b>	<b>\$33,674.22</b>	<b>\$45,176.66</b>	<b>\$82,991.94</b>
800 <u>Other Objects</u>				
810 Dues and Fees	18.17	3,989.77	1,285.00	5,292.94
890 Miscellaneous Expenditures	(230.73)	(38,224.20)		(71,646.93)
<b>Total Other Objects</b>	<b>(\$212.56)</b>	<b>(\$34,234.43)</b>	<b>\$1,285.00</b>	<b>(\$66,353.99)</b>
<b>Total 2100 Support Services – Students</b>	<b>\$456,953.03</b>	<b>\$2,618,343.22</b>	<b>\$221,043.19</b>	<b>\$6,039,157.53</b>

LEA : 112679002      York City SD

Printed 11/20/2020 9:08:04 AM

General Fund (10)

2110 Supervision of Student Services

	Elementary	Secondary	Federal	Total
<b>100 <u>Personnel Services – Salaries</u></b>				
100 Personnel Services – Salaries	719.41	119,182.53	84,514.50	204,416.44
<b>Total Personnel Services – Salaries</b>	<b>\$719.41</b>	<b>\$119,182.53</b>	<b>\$84,514.50</b>	<b>\$204,416.44</b>
<b>200 <u>Personnel Services – Employee Benefits</u></b>				
210 Group Insurance – Contracted Provider	157.75	26,132.45		26,290.20
220 Social Security Contributions	54.76	9,071.51	6,457.30	15,583.57
230 PSERS Retirement Contributions	246.69	40,867.57	7,245.01	48,359.27
250 Unemployment Compensation	0.17	27.83	222.22	250.22
260 Workers' Compensation	12.95	2,145.31	1,521.29	3,679.55
291 Other Retirement Plans	8.31	1,376.29		1,384.60
<b>Total Personnel Services – Employee Benefits</b>	<b>\$480.63</b>	<b>\$79,620.96</b>	<b>\$15,445.82</b>	<b>\$95,547.41</b>
<b>300 <u>Purchased Professional and Technical Services</u></b>				
322 Professional Educational Services – Ius			36,440.69	36,440.69
323 Professional Educational Services – Other Educational Agencies			12,500.00	12,500.00
329 Professional Educational Services – Other			10,927.75	10,927.75
<b>Total Purchased Professional and Technical Services</b>			<b>\$59,868.44</b>	<b>\$59,868.44</b>
<b>500 <u>Other Purchased Services</u></b>				
580 Travel			144.52	144.52
<b>Total Other Purchased Services</b>			<b>\$144.52</b>	<b>\$144.52</b>
<b>600 <u>Supplies</u></b>				
610 General Supplies			42,288.86	42,288.86
<b>Total Supplies</b>			<b>\$42,288.86</b>	<b>\$42,288.86</b>
<b>Total 2110 Supervision of Student Services</b>	<b>\$1,200.04</b>	<b>\$198,803.49</b>	<b>\$202,262.14</b>	<b>\$402,265.67</b>

LEA : 112679002      York City SD

Printed 11/20/2020 9:08:04 AM

<b>General Fund (10)</b>				
<b>2111 Supervision of Student Services – Head of Component</b>	<b><u>Elementary</u></b>	<b><u>Secondary</u></b>	<b><u>Federal</u></b>	<b><u>Total</u></b>
<b>100 <u>Personnel Services – Salaries</u></b>				
100 Personnel Services – Salaries	719.41	119,182.53	84,514.50	204,416.44
<b>Total Personnel Services – Salaries</b>	<b>\$719.41</b>	<b>\$119,182.53</b>	<b>\$84,514.50</b>	<b>\$204,416.44</b>
<b>200 <u>Personnel Services – Employee Benefits</u></b>				
210 Group Insurance – Contracted Provider	157.75	26,132.45		26,290.20
220 Social Security Contributions	54.76	9,071.51	6,457.30	15,583.57
230 PSERS Retirement Contributions	246.69	40,867.57	7,245.01	48,359.27
250 Unemployment Compensation	0.17	27.83	222.22	250.22
260 Workers' Compensation	12.95	2,145.31	1,521.29	3,679.55
291 Other Retirement Plans	8.31	1,376.29		1,384.60
<b>Total Personnel Services – Employee Benefits</b>	<b>\$480.63</b>	<b>\$79,620.96</b>	<b>\$15,445.82</b>	<b>\$95,547.41</b>
<b>300 <u>Purchased Professional and Technical Services</u></b>				
322 Professional Educational Services – Ius			36,440.69	36,440.69
323 Professional Educational Services – Other Educational Agencies			12,500.00	12,500.00
329 Professional Educational Services – Other			10,927.75	10,927.75
<b>Total Purchased Professional and Technical Services</b>			<b>\$59,868.44</b>	<b>\$59,868.44</b>
<b>500 <u>Other Purchased Services</u></b>				
580 Travel			144.52	144.52
<b>Total Other Purchased Services</b>			<b>\$144.52</b>	<b>\$144.52</b>
<b>600 <u>Supplies</u></b>				
610 General Supplies			42,288.86	42,288.86
<b>Total Supplies</b>			<b>\$42,288.86</b>	<b>\$42,288.86</b>
<b>Total 2111 Supervision of Student Services – Head of Component</b>	<b>\$1,200.04</b>	<b>\$198,803.49</b>	<b>\$202,262.14</b>	<b>\$402,265.67</b>



LEA : 112679002      York City SD

Printed 11/20/2020 9:08:04 AM

General Fund (10)				
2120 Guidance Services	<u>Elementary</u>	<u>Secondary</u>	<u>Federal</u>	<u>Total</u>
100 <u>Personnel Services – Salaries</u>				
100 Personnel Services – Salaries	269,876.00	536,698.42		806,574.42
<b>Total Personnel Services – Salaries</b>	<b>\$269,876.00</b>	<b>\$536,698.42</b>		<b>\$806,574.42</b>
200 <u>Personnel Services – Employee Benefits</u>				
210 Group Insurance – Contracted Provider	55,702.70	104,951.85		160,654.55
220 Social Security Contributions	19,929.51	40,143.86		60,073.37
230 PSERS Retirement Contributions	92,540.61	183,081.48		275,622.09
250 Unemployment Compensation	84.01	167.78		251.79
260 Workers' Compensation	4,857.60	9,660.81		14,518.41
<b>Total Personnel Services – Employee Benefits</b>	<b>\$173,114.43</b>	<b>\$338,005.78</b>		<b>\$511,120.21</b>
300 <u>Purchased Professional and Technical Services</u>				
329 Professional Educational Services – Other	3,490.00		10,000.00	13,490.00
<b>Total Purchased Professional and Technical Services</b>	<b>\$3,490.00</b>		<b>\$10,000.00</b>	<b>\$13,490.00</b>
500 <u>Other Purchased Services</u>				
510 Student Transportation Services		1,377.23		1,377.23
<b>Total Other Purchased Services</b>		<b>\$1,377.23</b>		<b>\$1,377.23</b>
600 <u>Supplies</u>				
610 General Supplies		6,325.14		6,325.14
<b>Total Supplies</b>		<b>\$6,325.14</b>		<b>\$6,325.14</b>
800 <u>Other Objects</u>				
810 Dues and Fees		979.00		979.00
<b>Total Other Objects</b>		<b>\$979.00</b>		<b>\$979.00</b>
<b>Total 2120 Guidance Services</b>	<b>\$446,480.43</b>	<b>\$883,385.57</b>	<b>\$10,000.00</b>	<b>\$1,339,866.00</b>

LEA : 112679002      York City SD

Printed 11/20/2020 9:08:04 AM

General Fund (10)				
2130 Attendance Services	<u>Elementary</u>	<u>Secondary</u>	<u>Federal</u>	<u>Total</u>
100 <u>Personnel Services – Salaries</u>				
100 Personnel Services – Salaries				455,718.89
Total Personnel Services – Salaries				\$455,718.89
200 <u>Personnel Services – Employee Benefits</u>				
210 Group Insurance – Contracted Provider				132,650.75
220 Social Security Contributions				34,115.09
230 PSERS Retirement Contributions				152,635.94
250 Unemployment Compensation				203.79
260 Workers' Compensation				8,203.17
291 Other Retirement Plans				923.00
Total Personnel Services – Employee Benefits				\$328,731.74
500 <u>Other Purchased Services</u>				
580 Travel				36.36
Total Other Purchased Services				\$36.36
600 <u>Supplies</u>				
640 Books and Periodicals				3,975.97
Total Supplies				\$3,975.97
800 <u>Other Objects</u>				
890 Miscellaneous Expenditures				(33,192.00)
Total Other Objects				(\$33,192.00)
Total 2130 Attendance Services				\$755,270.96

LEA : 112679002     York City SD

Printed 11/20/2020 9:08:04 AM

General Fund (10)				
2140 Psychological Services	<u>Elementary</u>	<u>Secondary</u>	<u>Federal</u>	<u>Total</u>
300 <u>Purchased Professional and Technical Services</u>				
322 Professional Educational Services – Ius	3,541.07	586,637.78		590,178.85
329 Professional Educational Services – Other	5,759.38	954,137.62		959,897.00
Total Purchased Professional and Technical Services	\$9,300.45	\$1,540,775.40		\$1,550,075.85
600 <u>Supplies</u>				
610 General Supplies	16.80	2,783.20		2,800.00
Total Supplies	\$16.80	\$2,783.20		\$2,800.00
Total 2140 Psychological Services	\$9,317.25	\$1,543,558.60		\$1,552,875.85

LEA : 112679002     York City SD

Printed 11/20/2020 9:08:04 AM

General Fund (10)

2160 Social Work Services

	<u>Elementary</u>	<u>Secondary</u>	<u>Federal</u>	<u>Total</u>
<b>100 <u>Personnel Services – Salaries</u></b>				
100 Personnel Services – Salaries				1,154,270.64
<b>Total Personnel Services – Salaries</b>				<b>\$1,154,270.64</b>
<b>200 <u>Personnel Services – Employee Benefits</u></b>				
210 Group Insurance – Contracted Provider				203,813.82
220 Social Security Contributions				87,040.38
230 PSERS Retirement Contributions				393,848.45
250 Unemployment Compensation				391.98
260 Workers' Compensation				13,669.40
<b>Total Personnel Services – Employee Benefits</b>				<b>\$698,764.03</b>
<b>300 <u>Purchased Professional and Technical Services</u></b>				
329 Professional Educational Services – Other				2,921.70
<b>Total Purchased Professional and Technical Services</b>				<b>\$2,921.70</b>
<b>Total 2160 Social Work Services</b>				<b>\$1,855,956.37</b>

LEA : 112679002     York City SD

Printed 11/20/2020 9:08:04 AM

General Fund (10)

2170 Student Accounting Services	<u>Elementary</u>	<u>Secondary</u>	<u>Federal</u>	<u>Total</u>
100 <u>Personnel Services – Salaries</u>				
100 Personnel Services – Salaries				73,966.63
Total Personnel Services – Salaries				\$73,966.63
200 <u>Personnel Services – Employee Benefits</u>				
210 Group Insurance – Contracted Provider				25,341.12
220 Social Security Contributions				5,578.36
230 PSERS Retirement Contributions				25,317.36
250 Unemployment Compensation				55.99
260 Workers' Compensation				1,331.30
Total Personnel Services – Employee Benefits				\$57,624.13
Total 2170 Student Accounting Services				\$131,590.76

LEA : 112679002     York City SD

Printed 11/20/2020 9:08:04 AM

General Fund (10)

2190 Other Student Services

	<u>Elementary</u>	<u>Secondary</u>	<u>Federal</u>	<u>Total</u>
<b>300 <u>Purchased Professional and Technical Services</u></b>				
329 Professional Educational Services – Other			117.37	117.37
330 Other Professional Services	4.02	665.88	2,169.00	2,838.90
<b>Total Purchased Professional and Technical Services</b>	<b>\$4.02</b>	<b>\$665.88</b>	<b>\$2,286.37</b>	<b>\$2,956.27</b>
<b>500 <u>Other Purchased Services</u></b>				
549 Other Advertising/Public Relations	0.82	135.60		136.42
580 Travel	14.74	2,441.63	2,321.88	4,778.25
<b>Total Other Purchased Services</b>	<b>\$15.56</b>	<b>\$2,577.23</b>	<b>\$2,321.88</b>	<b>\$4,914.67</b>
<b>600 <u>Supplies</u></b>				
610 General Supplies	127.17	21,066.54	2,887.80	24,081.51
640 Books and Periodicals	21.12	3,499.34		3,520.46
<b>Total Supplies</b>	<b>\$148.29</b>	<b>\$24,565.88</b>	<b>\$2,887.80</b>	<b>\$27,601.97</b>
<b>800 <u>Other Objects</u></b>				
810 Dues and Fees	18.17	3,010.77	1,285.00	4,313.94
890 Miscellaneous Expenditures	(230.73)	(38,224.20)		(38,454.93)
<b>Total Other Objects</b>	<b>(\$212.56)</b>	<b>(\$35,213.43)</b>	<b>\$1,285.00</b>	<b>(\$34,140.99)</b>
<b>Total 2190 Other Student Services</b>	<b>(\$44.69)</b>	<b>(\$7,404.44)</b>	<b>\$8,781.05</b>	<b>\$1,331.92</b>

LEA : 112679002     York City SD

Printed 11/20/2020 9:08:04 AM

General Fund (10)

2200 Support Services – Instructional Staff	Elementary	Secondary	Federal	Total
<b>100 Personnel Services – Salaries</b>				
100 Personnel Services – Salaries	63,994.65	1,027,406.79	247,835.26	1,339,236.70
<b>Total Personnel Services – Salaries</b>	<b>\$63,994.65</b>	<b>\$1,027,406.79</b>	<b>\$247,835.26</b>	<b>\$1,339,236.70</b>
<b>200 Personnel Services – Employee Benefits</b>				
210 Group Insurance – Contracted Provider	22,554.52	220,140.92	43,764.49	286,459.93
220 Social Security Contributions	4,795.49	77,930.92	18,410.55	101,136.96
230 PSERS Retirement Contributions	21,851.49	337,019.01	83,255.26	442,125.76
240 Tuition Reimbursement	2,064.55	342,026.36		344,090.91
250 Unemployment Compensation	29.51	268.10	107.09	404.70
260 Workers' Compensation	1,157.74	19,461.27	4,460.19	25,079.20
291 Other Retirement Plans	5.54	917.46	1,384.60	2,307.60
<b>Total Personnel Services – Employee Benefits</b>	<b>\$52,458.84</b>	<b>\$997,764.04</b>	<b>\$151,382.18</b>	<b>\$1,201,605.06</b>
<b>300 Purchased Professional and Technical Services</b>				
322 Professional Educational Services – Ius			8,000.00	8,000.00
329 Professional Educational Services – Other	3,684.30	91,613.00	672,089.01	767,386.31
360 Employee Training and Development Services			211.50	211.50
<b>Total Purchased Professional and Technical Services</b>	<b>\$3,684.30</b>	<b>\$91,613.00</b>	<b>\$680,300.51</b>	<b>\$775,597.81</b>
<b>400 Purchased Property Services</b>				
430 Repairs and Maintenance Services	116.42	19,286.22		19,402.64
<b>Total Purchased Property Services</b>	<b>\$116.42</b>	<b>\$19,286.22</b>		<b>\$19,402.64</b>
<b>500 Other Purchased Services</b>				
580 Travel	4,056.76	1,280.43	16,707.25	22,044.44
<b>Total Other Purchased Services</b>	<b>\$4,056.76</b>	<b>\$1,280.43</b>	<b>\$16,707.25</b>	<b>\$22,044.44</b>
<b>600 Supplies</b>				
610 General Supplies	1,103.20	184,685.87	30,916.28	216,705.35
630 Food	0.30	49.70		50.00
640 Books and Periodicals	51.96	8,607.09	33,460.00	42,119.05
<b>Total Supplies</b>	<b>\$1,155.46</b>	<b>\$193,342.66</b>	<b>\$64,376.28</b>	<b>\$258,874.40</b>
<b>800 Other Objects</b>				
810 Dues and Fees	12,021.70	3,594.80	46,972.48	62,588.98
<b>Total Other Objects</b>	<b>\$12,021.70</b>	<b>\$3,594.80</b>	<b>\$46,972.48</b>	<b>\$62,588.98</b>
<b>Total 2200 Support Services – Instructional Staff</b>	<b>\$137,488.13</b>	<b>\$2,334,287.94</b>	<b>\$1,207,573.96</b>	<b>\$3,679,350.03</b>

LEA : 112679002    York City SD

Printed 11/20/2020 9:08:04 AM

General Fund (10)

2240 Computer-Assisted Instruction Support Services

	<u>Elementary</u>	<u>Secondary</u>	<u>Federal</u>	<u>Total</u>
<b>400 <u>Purchased Property Services</u></b>				
430 Repairs and Maintenance Services	116.42	19,286.22		19,402.64
<b>Total Purchased Property Services</b>	<b>\$116.42</b>	<b>\$19,286.22</b>		<b>\$19,402.64</b>
<b>600 <u>Supplies</u></b>				
610 General Supplies	866.10	143,484.01		144,350.11
<b>Total Supplies</b>	<b>\$866.10</b>	<b>\$143,484.01</b>		<b>\$144,350.11</b>
<b>Total 2240 Computer-Assisted Instruction Support Services</b>	<b>\$982.52</b>	<b>\$162,770.23</b>		<b>\$163,752.75</b>



LEA : 112679002      York City SD

Printed 11/20/2020 9:08:04 AM

General Fund (10)				
2250 School Library Services	<u>Elementary</u>	<u>Secondary</u>	<u>Federal</u>	<u>Total</u>
100 <u>Personnel Services – Salaries</u>				
100 Personnel Services – Salaries	57,793.00			57,793.00
Total Personnel Services – Salaries	\$57,793.00			\$57,793.00
200 <u>Personnel Services – Employee Benefits</u>				
210 Group Insurance – Contracted Provider	21,225.69			21,225.69
220 Social Security Contributions	4,325.08			4,325.08
230 PSERS Retirement Contributions	19,817.17			19,817.17
250 Unemployment Compensation	27.89			27.89
260 Workers' Compensation	1,040.27			1,040.27
Total Personnel Services – Employee Benefits	\$46,436.10			\$46,436.10
300 <u>Purchased Professional and Technical Services</u>				
329 Professional Educational Services – Other			392,784.00	392,784.00
Total Purchased Professional and Technical Services			\$392,784.00	\$392,784.00
600 <u>Supplies</u>				
610 General Supplies	28.95	6,718.37		6,747.32
640 Books and Periodicals	9.50	1,573.88		1,583.38
Total Supplies	\$38.45	\$8,292.25		\$8,330.70
Total 2250 School Library Services	\$104,267.55	\$8,292.25	\$392,784.00	\$505,343.80

LEA : 112679002     York City SD

Printed 11/20/2020 9:08:04 AM

General Fund (10)

2260 Instruction and Curriculum Development Services	<u>Elementary</u>	<u>Secondary</u>	<u>Federal</u>	<u>Total</u>
100 <u>Personnel Services – Salaries</u>				
100 Personnel Services – Salaries	5,220.52	864,865.92	247,365.48	1,117,451.92
<b>Total Personnel Services – Salaries</b>	<b>\$5,220.52</b>	<b>\$864,865.92</b>	<b>\$247,365.48</b>	<b>\$1,117,451.92</b>
200 <u>Personnel Services – Employee Benefits</u>				
210 Group Insurance – Contracted Provider	1,328.83	220,140.92	43,764.49	265,234.24
220 Social Security Contributions	395.93	65,592.56	18,375.47	84,363.96
230 PSERS Retirement Contributions	1,697.89	281,283.62	83,214.98	366,196.49
250 Unemployment Compensation	1.62	267.86	105.91	375.39
260 Workers' Compensation	93.87	15,550.35	4,451.71	20,095.93
291 Other Retirement Plans	5.54	917.46	1,384.60	2,307.60
<b>Total Personnel Services – Employee Benefits</b>	<b>\$3,523.68</b>	<b>\$583,752.77</b>	<b>\$151,297.16</b>	<b>\$738,573.61</b>
300 <u>Purchased Professional and Technical Services</u>				
322 Professional Educational Services – Ius			8,000.00	8,000.00
329 Professional Educational Services – Other	508.78	84,287.22		84,796.00
<b>Total Purchased Professional and Technical Services</b>	<b>\$508.78</b>	<b>\$84,287.22</b>	<b>\$8,000.00</b>	<b>\$92,796.00</b>
500 <u>Other Purchased Services</u>				
580 Travel	1.07	175.84		176.91
<b>Total Other Purchased Services</b>	<b>\$1.07</b>	<b>\$175.84</b>		<b>\$176.91</b>
600 <u>Supplies</u>				
610 General Supplies	205.43	34,033.46		34,238.89
640 Books and Periodicals	21.58	3,574.74	33,460.00	37,056.32
<b>Total Supplies</b>	<b>\$227.01</b>	<b>\$37,608.20</b>	<b>\$33,460.00</b>	<b>\$71,295.21</b>
800 <u>Other Objects</u>				
810 Dues and Fees	10.94	1,813.06		1,824.00
<b>Total Other Objects</b>	<b>\$10.94</b>	<b>\$1,813.06</b>		<b>\$1,824.00</b>
<b>Total 2260 Instruction and Curriculum Development Services</b>	<b>\$9,492.00</b>	<b>\$1,572,503.01</b>	<b>\$440,122.64</b>	<b>\$2,022,117.65</b>

LEA : 112679002     York City SD

Printed 11/20/2020 9:08:04 AM

General Fund (10)

2270 Instructional Staff Professional Development Services	<u>Elementary</u>	<u>Secondary</u>	<u>Federal</u>	<u>Total</u>
100 <u>Personnel Services – Salaries</u>				
100 Personnel Services – Salaries	981.13	162,540.87	469.78	163,991.78
<b>Total Personnel Services – Salaries</b>	<b>\$981.13</b>	<b>\$162,540.87</b>	<b>\$469.78</b>	<b>\$163,991.78</b>
200 <u>Personnel Services – Employee Benefits</u>				
220 Social Security Contributions	74.48	12,338.36	35.08	12,447.92
230 PSERS Retirement Contributions	336.43	55,735.39	40.28	56,112.10
240 Tuition Reimbursement	2,064.55	342,026.36		344,090.91
250 Unemployment Compensation		0.24	1.18	1.42
260 Workers' Compensation	23.60	3,910.92	8.48	3,943.00
<b>Total Personnel Services – Employee Benefits</b>	<b>\$2,499.06</b>	<b>\$414,011.27</b>	<b>\$85.02</b>	<b>\$416,595.35</b>
300 <u>Purchased Professional and Technical Services</u>				
329 Professional Educational Services – Other	3,175.52	7,325.78	278,855.01	289,356.31
360 Employee Training and Development Services			211.50	211.50
<b>Total Purchased Professional and Technical Services</b>	<b>\$3,175.52</b>	<b>\$7,325.78</b>	<b>\$279,066.51</b>	<b>\$289,567.81</b>
500 <u>Other Purchased Services</u>				
580 Travel	4,055.69	1,104.59	16,707.25	21,867.53
<b>Total Other Purchased Services</b>	<b>\$4,055.69</b>	<b>\$1,104.59</b>	<b>\$16,707.25</b>	<b>\$21,867.53</b>
600 <u>Supplies</u>				
610 General Supplies	2.72	450.03	20,196.62	20,649.37
630 Food	0.30	49.70		50.00
640 Books and Periodicals	20.88	3,458.47		3,479.35
<b>Total Supplies</b>	<b>\$23.90</b>	<b>\$3,958.20</b>	<b>\$20,196.62</b>	<b>\$24,178.72</b>
800 <u>Other Objects</u>				
810 Dues and Fees	12,010.76	1,781.74	46,972.48	60,764.98
<b>Total Other Objects</b>	<b>\$12,010.76</b>	<b>\$1,781.74</b>	<b>\$46,972.48</b>	<b>\$60,764.98</b>
<b>Total 2270 Instructional Staff Professional Development Services</b>	<b>\$22,746.06</b>	<b>\$590,722.45</b>	<b>\$363,497.66</b>	<b>\$976,966.17</b>

LEA : 112679002     York City SD

Printed 11/20/2020 9:08:04 AM

General Fund (10)

2280 Nonpublic Support Services	<u>Elementary</u>	<u>Secondary</u>	<u>Federal</u>	<u>Total</u>
300 <u>Purchased Professional and Technical Services</u>				
329 Professional Educational Services – Other			450.00	450.00
Total Purchased Professional and Technical Services			\$450.00	\$450.00
600 <u>Supplies</u>				
610 General Supplies			10,719.66	10,719.66
Total Supplies			\$10,719.66	\$10,719.66
Total 2280 Nonpublic Support Services			\$11,169.66	\$11,169.66

LEA : 112679002      York City SD

Printed 11/20/2020 9:08:04 AM

General Fund (10)

2300 Support Services – Administration	Elementary	Secondary	Federal	Total
<b>100 Personnel Services – Salaries</b>				
100 Personnel Services – Salaries	2,667,418.25	1,012,182.65	8,360.86	4,533,512.21
<b>Total Personnel Services – Salaries</b>	<b>\$2,667,418.25</b>	<b>\$1,012,182.65</b>	<b>\$8,360.86</b>	<b>\$4,533,512.21</b>
<b>200 Personnel Services – Employee Benefits</b>				
210 Group Insurance – Contracted Provider	664,737.80	323,948.19	4,201.44	1,198,943.28
220 Social Security Contributions	201,028.78	76,060.68	632.80	339,804.53
230 PSERS Retirement Contributions	909,180.48	317,205.58	2,866.94	1,516,708.68
250 Unemployment Compensation	1,068.90	18,963.44		20,341.24
260 Workers' Compensation	47,907.41	(3,984.53)	150.50	59,293.08
291 Other Retirement Plans	21,322.88	4,153.60		35,632.90
<b>Total Personnel Services – Employee Benefits</b>	<b>\$1,845,246.25</b>	<b>\$736,346.96</b>	<b>\$7,851.68</b>	<b>\$3,170,723.71</b>
<b>300 Purchased Professional and Technical Services</b>				
329 Professional Educational Services – Other	4,450.00			35,438.51
330 Other Professional Services				249,526.61
<b>Total Purchased Professional and Technical Services</b>	<b>\$4,450.00</b>			<b>\$284,965.12</b>
<b>400 Purchased Property Services</b>				
440 Rentals		1,606.55		4,231.95
<b>Total Purchased Property Services</b>		<b>\$1,606.55</b>		<b>\$4,231.95</b>
<b>500 Other Purchased Services</b>				
520 Insurance – General				50,590.00
530 Communications	550.00	9,668.68		10,218.68
541 Advertising Related to Federal Grant Awards	2,330.57	791.46		5,050.99
542 Public Relations Related to Federal Grant Awards				320.02
549 Other Advertising/Public Relations				1,177.80
550 Printing and Binding				4,851.56
580 Travel	0.84	139.16		3,206.32
599 Other Miscellaneous Purchased Services	564.28	291.02		855.30
<b>Total Other Purchased Services</b>	<b>\$3,445.69</b>	<b>\$10,890.32</b>		<b>\$76,270.67</b>
<b>600 Supplies</b>				
610 General Supplies	7,496.76	44,905.84		81,905.73
630 Food	0.92	152.12		12,273.90
640 Books and Periodicals			990.00	5,454.13
<b>Total Supplies</b>	<b>\$7,497.68</b>	<b>\$45,057.96</b>	<b>\$990.00</b>	<b>\$99,633.76</b>
<b>800 Other Objects</b>				
810 Dues and Fees	595.60	99.40		31,543.45
890 Miscellaneous Expenditures				282,441.19
<b>Total Other Objects</b>	<b>\$595.60</b>	<b>\$99.40</b>		<b>\$313,984.64</b>
<b>Total 2300 Support Services – Administration</b>	<b>\$4,528,653.47</b>	<b>\$1,806,183.84</b>	<b>\$17,202.54</b>	<b>\$8,483,322.06</b>

LEA : 112679002      York City SD

Printed 11/20/2020 9:08:04 AM

General Fund (10)				
2310 Board Services	<u>Elementary</u>	<u>Secondary</u>	<u>Federal</u>	<u>Total</u>
400 <u>Purchased Property Services</u>				
440 Rentals				2,525.40
Total Purchased Property Services				\$2,525.40
500 <u>Other Purchased Services</u>				
520 Insurance – General				50,590.00
542 Public Relations Related to Federal Grant Awards				320.02
549 Other Advertising/Public Relations				1,177.80
580 Travel				943.20
Total Other Purchased Services				\$53,031.02
600 <u>Supplies</u>				
630 Food				3,818.67
640 Books and Periodicals				50.00
Total Supplies				\$3,868.67
800 <u>Other Objects</u>				
810 Dues and Fees				8,950.05
890 Miscellaneous Expenditures				8,925.27
Total Other Objects				\$17,875.32
Total 2310 Board Services				\$77,300.41

LEA : 112679002      York City SD

Printed 11/20/2020 9:08:04 AM

General Fund (10)				
2330 Tax Assessment and Collection Services	<u>Elementary</u>	<u>Secondary</u>	<u>Federal</u>	<u>Total</u>
300 <u>Purchased Professional and Technical Services</u>				
330 Other Professional Services				48,633.55
Total Purchased Professional and Technical Services				\$48,633.55
500 <u>Other Purchased Services</u>				
541 Advertising Related to Federal Grant Awards				1,928.96
Total Other Purchased Services				\$1,928.96
600 <u>Supplies</u>				
610 General Supplies				6,097.03
Total Supplies				\$6,097.03
Total 2330 Tax Assessment and Collection Services				\$56,659.54

LEA : 112679002    York City SD

Printed 11/20/2020 9:08:04 AM

General Fund (10)

2350 Legal and Accounting Services	<u>Elementary</u>	<u>Secondary</u>	<u>Federal</u>	<u>Total</u>
300 <u>Purchased Professional and Technical Services</u>				
330 Other Professional Services				200,893.06
<b>Total Purchased Professional and Technical Services</b>				<b>\$200,893.06</b>
<b>Total 2350 Legal and Accounting Services</b>				<b>\$200,893.06</b>



LEA : 112679002      York City SD

Printed 11/20/2020 9:08:04 AM

<b>General Fund (10)</b>				
<b>2360 Office of the Superintendent / Executive Director Services</b>	<b><u>Elementary</u></b>	<b><u>Secondary</u></b>	<b><u>Federal</u></b>	<b><u>Total</u></b>
<b>100 <u>Personnel Services – Salaries</u></b>				
100 Personnel Services – Salaries				797,253.53
<b>Total Personnel Services – Salaries</b>				<b>\$797,253.53</b>
<b>200 <u>Personnel Services – Employee Benefits</u></b>				
210 Group Insurance – Contracted Provider				186,334.60
220 Social Security Contributions				58,450.32
230 PSERS Retirement Contributions				271,083.53
250 Unemployment Compensation				252.92
260 Workers' Compensation				14,350.23
291 Other Retirement Plans				10,156.42
<b>Total Personnel Services – Employee Benefits</b>				<b>\$540,628.02</b>
<b>300 <u>Purchased Professional and Technical Services</u></b>				
329 Professional Educational Services – Other				30,988.51
<b>Total Purchased Professional and Technical Services</b>				<b>\$30,988.51</b>
<b>400 <u>Purchased Property Services</u></b>				
440 Rentals				100.00
<b>Total Purchased Property Services</b>				<b>\$100.00</b>
<b>500 <u>Other Purchased Services</u></b>				
550 Printing and Binding				4,851.56
580 Travel				2,123.12
<b>Total Other Purchased Services</b>				<b>\$6,974.68</b>
<b>600 <u>Supplies</u></b>				
610 General Supplies				23,406.10
630 Food				8,302.19
640 Books and Periodicals			990.00	5,404.13
<b>Total Supplies</b>			<b>\$990.00</b>	<b>\$37,112.42</b>
<b>800 <u>Other Objects</u></b>				
810 Dues and Fees				21,898.40
890 Miscellaneous Expenditures				1,458.67
<b>Total Other Objects</b>				<b>\$23,357.07</b>
<b>Total 2360 Office of the Superintendent / Executive Director Services</b>			<b>\$990.00</b>	<b>\$1,436,414.23</b>

LEA : 112679002     York City SD

Printed 11/20/2020 9:08:04 AM

General Fund (10)

2380 Office of the Principal Services	Elementary	Secondary	Federal	Total
100 <u>Personnel Services – Salaries</u>				
100 Personnel Services – Salaries	2,667,418.25	1,012,182.65	8,360.86	3,687,961.76
<b>Total Personnel Services – Salaries</b>	<b>\$2,667,418.25</b>	<b>\$1,012,182.65</b>	<b>\$8,360.86</b>	<b>\$3,687,961.76</b>
200 <u>Personnel Services – Employee Benefits</u>				
210 Group Insurance – Contracted Provider	664,737.80	323,948.19	4,201.44	992,887.43
220 Social Security Contributions	201,028.78	76,060.68	632.80	277,722.26
230 PSERS Retirement Contributions	909,180.48	317,205.58	2,866.94	1,229,253.00
250 Unemployment Compensation	1,068.90	18,963.44		20,032.34
260 Workers' Compensation	47,907.41	(3,984.53)	150.50	44,073.38
291 Other Retirement Plans	21,322.88	4,153.60		25,476.48
<b>Total Personnel Services – Employee Benefits</b>	<b>\$1,845,246.25</b>	<b>\$736,346.96</b>	<b>\$7,851.68</b>	<b>\$2,589,444.89</b>
300 <u>Purchased Professional and Technical Services</u>				
329 Professional Educational Services – Other	4,450.00			4,450.00
<b>Total Purchased Professional and Technical Services</b>	<b>\$4,450.00</b>			<b>\$4,450.00</b>
400 <u>Purchased Property Services</u>				
440 Rentals		1,606.55		1,606.55
<b>Total Purchased Property Services</b>		<b>\$1,606.55</b>		<b>\$1,606.55</b>
500 <u>Other Purchased Services</u>				
530 Communications	550.00	9,668.68		10,218.68
541 Advertising Related to Federal Grant Awards	2,330.57	791.46		3,122.03
580 Travel	0.84	139.16		140.00
599 Other Miscellaneous Purchased Services	564.28	291.02		855.30
<b>Total Other Purchased Services</b>	<b>\$3,445.69</b>	<b>\$10,890.32</b>		<b>\$14,336.01</b>
600 <u>Supplies</u>				
610 General Supplies	7,496.76	44,905.84		52,402.60
630 Food	0.92	152.12		153.04
<b>Total Supplies</b>	<b>\$7,497.68</b>	<b>\$45,057.96</b>		<b>\$52,555.64</b>
800 <u>Other Objects</u>				
810 Dues and Fees	595.60	99.40		695.00
<b>Total Other Objects</b>	<b>\$595.60</b>	<b>\$99.40</b>		<b>\$695.00</b>
<b>Total 2380 Office of the Principal Services</b>	<b>\$4,528,653.47</b>	<b>\$1,806,183.84</b>	<b>\$16,212.54</b>	<b>\$6,351,049.85</b>

LEA : 112679002      York City SD

Printed 11/20/2020 9:08:04 AM

General Fund (10)				
2390 Other Administration Services	<u>Elementary</u>	<u>Secondary</u>	<u>Federal</u>	<u>Total</u>
100 <u>Personnel Services – Salaries</u>				
100 Personnel Services – Salaries				48,296.92
Total Personnel Services – Salaries				\$48,296.92
200 <u>Personnel Services – Employee Benefits</u>				
210 Group Insurance – Contracted Provider				19,721.25
220 Social Security Contributions				3,631.95
230 PSERS Retirement Contributions				16,372.15
250 Unemployment Compensation				55.98
260 Workers' Compensation				869.47
Total Personnel Services – Employee Benefits				\$40,650.80
800 <u>Other Objects</u>				
890 Miscellaneous Expenditures				272,057.25
Total Other Objects				\$272,057.25
Total 2390 Other Administration Services				\$361,004.97

LEA : 112679002      York City SD

Printed 11/20/2020 9:08:04 AM

<b>General Fund (10)</b>				
<b>2400 Support Services – Pupil Health</b>	<u><b>Elementary</b></u>	<u><b>Secondary</b></u>	<u><b>Federal</b></u>	<u><b>Total</b></u>
<b>100 <u>Personnel Services – Salaries</u></b>				
100 Personnel Services – Salaries			5,008.80	920,098.69
<b>Total Personnel Services – Salaries</b>			<b>\$5,008.80</b>	<b>\$920,098.69</b>
<b>200 <u>Personnel Services – Employee Benefits</u></b>				
210 Group Insurance – Contracted Provider				364,154.94
220 Social Security Contributions			383.18	68,130.60
230 PSERS Retirement Contributions			838.23	312,939.63
250 Unemployment Compensation				560.05
260 Workers' Compensation			90.16	16,561.62
<b>Total Personnel Services – Employee Benefits</b>			<b>\$1,311.57</b>	<b>\$762,346.84</b>
<b>300 <u>Purchased Professional and Technical Services</u></b>				
322 Professional Educational Services – Ius				95,531.60
329 Professional Educational Services – Other				12,075.50
330 Other Professional Services				105,412.70
<b>Total Purchased Professional and Technical Services</b>				<b>\$213,019.80</b>
<b>600 <u>Supplies</u></b>				
610 General Supplies				13,316.98
<b>Total Supplies</b>				<b>\$13,316.98</b>
<b>Total 2400 Support Services – Pupil Health</b>			<b>\$6,320.37</b>	<b>\$1,908,782.31</b>

LEA : 112679002     York City SD

Printed 11/20/2020 9:08:04 AM

General Fund (10)

2420 Medical Services	<u>Elementary</u>	<u>Secondary</u>	<u>Federal</u>	<u>Total</u>
<b>100 <u>Personnel Services – Salaries</u></b>				
100 Personnel Services – Salaries				92,040.00
<b>Total Personnel Services – Salaries</b>				<b>\$92,040.00</b>
<b>200 <u>Personnel Services – Employee Benefits</u></b>				
210 Group Insurance – Contracted Provider				29,083.14
220 Social Security Contributions				6,944.70
230 PSERS Retirement Contributions				31,560.61
250 Unemployment Compensation				28.00
260 Workers' Compensation				1,656.72
<b>Total Personnel Services – Employee Benefits</b>				<b>\$69,273.17</b>
<b>300 <u>Purchased Professional and Technical Services</u></b>				
322 Professional Educational Services – lus				95,531.60
<b>Total Purchased Professional and Technical Services</b>				<b>\$95,531.60</b>
<b>600 <u>Supplies</u></b>				
610 General Supplies				13,316.98
<b>Total Supplies</b>				<b>\$13,316.98</b>
<b>Total 2420 Medical Services</b>				<b>\$270,161.75</b>

LEA : 112679002    York City SD

Printed 11/20/2020 9:08:04 AM

General Fund (10)

2430 Dental Services

	<u>Elementary</u>	<u>Secondary</u>	<u>Federal</u>	<u>Total</u>
300 <u>Purchased Professional and Technical Services</u>				
330 Other Professional Services				105,412.70
Total Purchased Professional and Technical Services				\$105,412.70
Total 2430 Dental Services				\$105,412.70

LEA : 112679002    York City SD

Printed 11/20/2020 9:08:04 AM

General Fund (10)

2440 Nursing Services

	<u>Elementary</u>	<u>Secondary</u>	<u>Federal</u>	<u>Total</u>
<b>100 <u>Personnel Services – Salaries</u></b>				
100 Personnel Services – Salaries			5,008.80	828,058.69
<b>Total Personnel Services – Salaries</b>			<b>\$5,008.80</b>	<b>\$828,058.69</b>
<b>200 <u>Personnel Services – Employee Benefits</u></b>				
210 Group Insurance – Contracted Provider				335,071.80
220 Social Security Contributions			383.18	61,185.90
230 PSERS Retirement Contributions			838.23	281,379.02
250 Unemployment Compensation				532.05
260 Workers' Compensation			90.16	14,904.90
<b>Total Personnel Services – Employee Benefits</b>			<b>\$1,311.57</b>	<b>\$693,073.67</b>
<b>300 <u>Purchased Professional and Technical Services</u></b>				
329 Professional Educational Services – Other				12,075.50
<b>Total Purchased Professional and Technical Services</b>				<b>\$12,075.50</b>
<b>Total 2440 Nursing Services</b>			<b>\$6,320.37</b>	<b>\$1,533,207.86</b>

LEA : 112679002      York City SD

Printed 11/20/2020 9:08:04 AM

General Fund (10)				
2500 Support Services – Business	<u>Elementary</u>	<u>Secondary</u>	<u>Federal</u>	<u>Total</u>
100 <u>Personnel Services – Salaries</u>				
100 Personnel Services – Salaries				591,460.55
Total Personnel Services – Salaries				\$591,460.55
200 <u>Personnel Services – Employee Benefits</u>				
210 Group Insurance – Contracted Provider				168,598.65
220 Social Security Contributions				44,999.05
230 PSERS Retirement Contributions				201,269.74
250 Unemployment Compensation				222.17
260 Workers' Compensation				10,646.73
Total Personnel Services – Employee Benefits				\$425,736.34
400 <u>Purchased Property Services</u>				
430 Repairs and Maintenance Services				295.00
440 Rentals				177,029.12
Total Purchased Property Services				\$177,324.12
500 <u>Other Purchased Services</u>				
541 Advertising Related to Federal Grant Awards				17,063.44
580 Travel				131.70
Total Other Purchased Services				\$17,195.14
600 <u>Supplies</u>				
610 General Supplies				48,565.49
Total Supplies				\$48,565.49
800 <u>Other Objects</u>				
810 Dues and Fees				33,728.67
890 Miscellaneous Expenditures				(7,072.13)
Total Other Objects				\$26,656.54
Total 2500 Support Services – Business				\$1,286,938.18



LEA : 112679002     York City SD

Printed 11/20/2020 9:08:04 AM

General Fund (10)				
2510 Fiscal Services	<u>Elementary</u>	<u>Secondary</u>	<u>Federal</u>	<u>Total</u>
100 <u>Personnel Services – Salaries</u>				
100 Personnel Services – Salaries				591,460.55
Total Personnel Services – Salaries				\$591,460.55
200 <u>Personnel Services – Employee Benefits</u>				
210 Group Insurance – Contracted Provider				168,598.65
220 Social Security Contributions				44,999.05
230 PSERS Retirement Contributions				201,269.74
250 Unemployment Compensation				222.17
260 Workers' Compensation				10,646.73
Total Personnel Services – Employee Benefits				\$425,736.34
400 <u>Purchased Property Services</u>				
440 Rentals				5,540.25
Total Purchased Property Services				\$5,540.25
500 <u>Other Purchased Services</u>				
541 Advertising Related to Federal Grant Awards				17,063.44
580 Travel				131.70
Total Other Purchased Services				\$17,195.14
600 <u>Supplies</u>				
610 General Supplies				30,897.07
Total Supplies				\$30,897.07
800 <u>Other Objects</u>				
810 Dues and Fees				28,828.67
890 Miscellaneous Expenditures				(6,965.47)
Total Other Objects				\$21,863.20
Total 2510 Fiscal Services				\$1,092,692.55

LEA : 112679002      York City SD

Printed 11/20/2020 9:08:04 AM

General Fund (10)				
2511 Supervision of Fiscal Services - Head of Component	<u>Elementary</u>	<u>Secondary</u>	<u>Federal</u>	<u>Total</u>
100 <u>Personnel Services – Salaries</u>				
100 Personnel Services – Salaries				591,460.55
Total Personnel Services – Salaries				\$591,460.55
200 <u>Personnel Services – Employee Benefits</u>				
210 Group Insurance – Contracted Provider				168,598.65
220 Social Security Contributions				44,999.05
230 PSERS Retirement Contributions				201,269.74
250 Unemployment Compensation				222.17
260 Workers' Compensation				10,646.73
Total Personnel Services – Employee Benefits				\$425,736.34
400 <u>Purchased Property Services</u>				
440 Rentals				5,540.25
Total Purchased Property Services				\$5,540.25
500 <u>Other Purchased Services</u>				
541 Advertising Related to Federal Grant Awards				17,063.44
580 Travel				131.70
Total Other Purchased Services				\$17,195.14
600 <u>Supplies</u>				
610 General Supplies				30,897.07
Total Supplies				\$30,897.07
800 <u>Other Objects</u>				
810 Dues and Fees				28,828.67
890 Miscellaneous Expenditures				(6,965.47)
Total Other Objects				\$21,863.20
Total 2511 Supervision of Fiscal Services - Head of Component				\$1,092,692.55

LEA : 112679002     York City SD

Printed 11/20/2020 9:08:04 AM

General Fund (10)

2520 Purchasing Services	<u>Elementary</u>	<u>Secondary</u>	<u>Federal</u>	<u>Total</u>
400 <u>Purchased Property Services</u>				
430 Repairs and Maintenance Services				295.00
440 Rentals				171,488.87
Total Purchased Property Services				\$171,783.87
600 <u>Supplies</u>				
610 General Supplies				17,668.42
Total Supplies				\$17,668.42
800 <u>Other Objects</u>				
810 Dues and Fees				4,900.00
890 Miscellaneous Expenditures				(106.66)
Total Other Objects				\$4,793.34
Total 2520 Purchasing Services				\$194,245.63

LEA : 112679002      York City SD

Printed 11/20/2020 9:08:04 AM

General Fund (10)

2600 Operation and Maintenance of Plant Services	Elementary	Secondary	Federal	Total
100 <u>Personnel Services – Salaries</u>				
100 Personnel Services – Salaries			2,550.21	4,409,523.15
<b>Total Personnel Services – Salaries</b>			<b>\$2,550.21</b>	<b>\$4,409,523.15</b>
200 <u>Personnel Services – Employee Benefits</u>				
210 Group Insurance – Contracted Provider				1,527,990.43
220 Social Security Contributions			195.08	331,401.04
230 PSERS Retirement Contributions			218.62	1,497,998.22
250 Unemployment Compensation				58,853.44
260 Workers' Compensation			45.91	52,698.95
<b>Total Personnel Services – Employee Benefits</b>			<b>\$459.61</b>	<b>\$3,468,942.08</b>
300 <u>Purchased Professional and Technical Services</u>				
329 Professional Educational Services – Other				454.50
350 Security / Safety Services				85,000.00
390 Other Purchased Professional and Technical Services				21,513.00
<b>Total Purchased Professional and Technical Services</b>				<b>\$106,967.50</b>
400 <u>Purchased Property Services</u>				
410 Cleaning Services				117,717.83
420 Utility Services				130,591.68
430 Repairs and Maintenance Services				595,746.00
440 Rentals				81,023.96
460 Extermination Services				12,459.44
<b>Total Purchased Property Services</b>				<b>\$937,538.91</b>
500 <u>Other Purchased Services</u>				
522 Automotive Liability Insurance				20,769.50
523 General Property and Liability Insurance				189,642.00
530 Communications				101,867.05
542 Public Relations Related to Federal Grant Awards				104.36
599 Other Miscellaneous Purchased Services				10,025.00
<b>Total Other Purchased Services</b>				<b>\$322,407.91</b>
600 <u>Supplies</u>				
610 General Supplies	2,724.18	524,145.62		526,869.80
620 Energy				1,051,338.46
630 Food				180.00
<b>Total Supplies</b>	<b>\$2,724.18</b>	<b>\$524,145.62</b>		<b>\$1,578,388.26</b>
700 <u>Property</u>				
752 Capital Equipment – Original and Additional				21,387.87
<b>Total Property</b>				<b>\$21,387.87</b>
800 <u>Other Objects</u>				
810 Dues and Fees				6,433.75
890 Miscellaneous Expenditures				1,947.91
<b>Total Other Objects</b>				<b>\$8,381.66</b>
<b>Total 2600 Operation and Maintenance of Plant Services</b>	<b>\$2,724.18</b>	<b>\$524,145.62</b>	<b>\$3,009.82</b>	<b>\$10,853,537.34</b>

LEA : 112679002     York City SD

Printed 11/20/2020 9:08:04 AM

<b>General Fund (10)</b>				
<b>2620 Operation of Buildings Services</b>	<u>Elementary</u>	<u>Secondary</u>	<u>Federal</u>	<u>Total</u>
<b>100 <u>Personnel Services – Salaries</u></b>				
100 Personnel Services – Salaries				2,645,039.63
<b>Total Personnel Services – Salaries</b>				<b>\$2,645,039.63</b>
<b>200 <u>Personnel Services – Employee Benefits</u></b>				
210 Group Insurance – Contracted Provider				968,429.19
220 Social Security Contributions				198,849.84
230 PSERS Retirement Contributions				900,179.38
250 Unemployment Compensation				38,773.58
260 Workers' Compensation				31,618.77
<b>Total Personnel Services – Employee Benefits</b>				<b>\$2,137,850.76</b>
<b>300 <u>Purchased Professional and Technical Services</u></b>				
390 Other Purchased Professional and Technical Services				21,513.00
<b>Total Purchased Professional and Technical Services</b>				<b>\$21,513.00</b>
<b>400 <u>Purchased Property Services</u></b>				
410 Cleaning Services				114,088.10
420 Utility Services				130,591.68
430 Repairs and Maintenance Services				592,509.96
440 Rentals				4,589.72
460 Extermination Services				12,459.44
<b>Total Purchased Property Services</b>				<b>\$854,238.90</b>
<b>500 <u>Other Purchased Services</u></b>				
523 General Property and Liability Insurance				180,167.00
530 Communications				79,863.02
542 Public Relations Related to Federal Grant Awards				104.36
<b>Total Other Purchased Services</b>				<b>\$260,134.38</b>
<b>600 <u>Supplies</u></b>				
610 General Supplies	2,694.44	519,218.73		521,913.17
620 Energy				1,051,338.46
<b>Total Supplies</b>	<b>\$2,694.44</b>	<b>\$519,218.73</b>		<b>\$1,573,251.63</b>
<b>700 <u>Property</u></b>				
752 Capital Equipment – Original and Additional				21,387.87
<b>Total Property</b>				<b>\$21,387.87</b>
<b>800 <u>Other Objects</u></b>				
810 Dues and Fees				4,308.75
<b>Total Other Objects</b>				<b>\$4,308.75</b>
<b>Total 2620 Operation of Buildings Services</b>	<b>\$2,694.44</b>	<b>\$519,218.73</b>		<b>\$7,517,724.92</b>

LEA : 112679002    York City SD

Printed 11/20/2020 9:08:04 AM

General Fund (10)				
2650 Vehicle Operation and Maintenance Services (Other Than Student Transportation Vehicles)	<u>Elementary</u>	<u>Secondary</u>	<u>Federal</u>	<u>Total</u>
400 <u>Purchased Property Services</u>				
440 Rentals				76,434.24
Total Purchased Property Services				\$76,434.24
500 <u>Other Purchased Services</u>				
522 Automotive Liability Insurance				20,769.50
530 Communications				4,039.53
Total Other Purchased Services				\$24,809.03
Total 2650 Vehicle Operation and Maintenance Services (Other Than Student Transportation Vehicles)				\$101,243.27

LEA : 112679002     York City SD

Printed 11/20/2020 9:08:04 AM

General Fund (10)

2660 Safety and Security Services

	Elementary	Secondary	Federal	Total
<b>100 Personnel Services – Salaries</b>				
100 Personnel Services – Salaries			2,550.21	1,764,483.52
<b>Total Personnel Services – Salaries</b>			<b>\$2,550.21</b>	<b>\$1,764,483.52</b>
<b>200 Personnel Services – Employee Benefits</b>				
210 Group Insurance – Contracted Provider				559,561.24
220 Social Security Contributions			195.08	132,551.20
230 PSERS Retirement Contributions			218.62	597,818.84
250 Unemployment Compensation				20,079.86
260 Workers' Compensation			45.91	21,080.18
<b>Total Personnel Services – Employee Benefits</b>			<b>\$459.61</b>	<b>\$1,331,091.32</b>
<b>300 Purchased Professional and Technical Services</b>				
329 Professional Educational Services – Other				454.50
350 Security / Safety Services				85,000.00
<b>Total Purchased Professional and Technical Services</b>				<b>\$85,454.50</b>
<b>400 Purchased Property Services</b>				
410 Cleaning Services				3,629.73
430 Repairs and Maintenance Services				3,236.04
<b>Total Purchased Property Services</b>				<b>\$6,865.77</b>
<b>500 Other Purchased Services</b>				
523 General Property and Liability Insurance				9,475.00
530 Communications				17,964.50
599 Other Miscellaneous Purchased Services				10,025.00
<b>Total Other Purchased Services</b>				<b>\$37,464.50</b>
<b>600 Supplies</b>				
610 General Supplies	29.74	4,926.89		4,956.63
630 Food				180.00
<b>Total Supplies</b>	<b>\$29.74</b>	<b>\$4,926.89</b>		<b>\$5,136.63</b>
<b>800 Other Objects</b>				
810 Dues and Fees				2,125.00
890 Miscellaneous Expenditures				1,947.91
<b>Total Other Objects</b>				<b>\$4,072.91</b>
<b>Total 2660 Safety and Security Services</b>	<b>\$29.74</b>	<b>\$4,926.89</b>	<b>\$3,009.82</b>	<b>\$3,234,569.15</b>

LEA : 112679002     York City SD

Printed 11/20/2020 9:08:04 AM

General Fund (10)				
2700 Student Transportation Services	<u>Elementary</u>	<u>Secondary</u>	<u>Federal</u>	<u>Total</u>
300 <u>Purchased Professional and Technical Services</u>				
350 Security / Safety Services				143,355.17
Total Purchased Professional and Technical Services				\$143,355.17
500 <u>Other Purchased Services</u>				
513 Contracted Carriers				288,553.21
516 Student Transportation Services From the IU				2,097,467.22
519 Student Transportation Services From Other Sources			24,825.28	24,825.28
Total Other Purchased Services			\$24,825.28	\$2,410,845.71
Total 2700 Student Transportation Services			\$24,825.28	\$2,554,200.88



Page 113

LEA : 112679002    York City SD

Printed 11/20/2020 9:08:04 AM

General Fund (10)

2730 Monitoring Services

	<u>Elementary</u>	<u>Secondary</u>	<u>Federal</u>	<u>Total</u>
300 <u>Purchased Professional and Technical Services</u>				
350 Security / Safety Services				143,355.17
Total Purchased Professional and Technical Services				\$143,355.17
Total 2730 Monitoring Services				\$143,355.17

Page 115

LEA : 112679002      York City SD

Printed 11/20/2020 9:08:04 AM

<b>General Fund (10)</b>				
<b>2800 Support Services – Central</b>				
	<u>Elementary</u>	<u>Secondary</u>	<u>Federal</u>	<u>Total</u>
<b>100 <u>Personnel Services – Salaries</u></b>				
100 Personnel Services – Salaries				851,009.51
<b>Total Personnel Services – Salaries</b>				<b>\$851,009.51</b>
<b>200 <u>Personnel Services – Employee Benefits</u></b>				
210 Group Insurance – Contracted Provider				247,846.47
220 Social Security Contributions				64,103.83
230 PSERS Retirement Contributions				289,824.47
240 Tuition Reimbursement				30,151.00
250 Unemployment Compensation				358.43
260 Workers' Compensation				15,719.15
291 Other Retirement Plans				1,846.24
<b>Total Personnel Services – Employee Benefits</b>				<b>\$649,849.59</b>
<b>300 <u>Purchased Professional and Technical Services</u></b>				
329 Professional Educational Services – Other				254,063.74
330 Other Professional Services				42,406.03
<b>Total Purchased Professional and Technical Services</b>				<b>\$296,469.77</b>
<b>400 <u>Purchased Property Services</u></b>				
430 Repairs and Maintenance Services				25,343.33
<b>Total Purchased Property Services</b>				<b>\$25,343.33</b>
<b>500 <u>Other Purchased Services</u></b>				
530 Communications				159,488.15
542 Public Relations Related to Federal Grant Awards				35.46
549 Other Advertising/Public Relations				18,018.95
580 Travel				5,477.16
<b>Total Other Purchased Services</b>				<b>\$183,019.72</b>
<b>600 <u>Supplies</u></b>				
610 General Supplies				138,405.39
630 Food				1,055.06
640 Books and Periodicals				789.12
<b>Total Supplies</b>				<b>\$140,249.57</b>
<b>700 <u>Property</u></b>				
752 Capital Equipment – Original and Additional				250,913.48
766 Capitalized Technology Equipment– Replacement				21,664.95
<b>Total Property</b>				<b>\$272,578.43</b>
<b>800 <u>Other Objects</u></b>				
810 Dues and Fees				21,679.21
890 Miscellaneous Expenditures				(95,148.89)
<b>Total Other Objects</b>				<b>(\$73,469.68)</b>
<b>Total 2800 Support Services – Central</b>				<b>\$2,345,050.24</b>

LEA : 112679002      York City SD

Printed 11/20/2020 9:08:04 AM

General Fund (10)				
2830 Staff Services				
	<u>Elementary</u>	<u>Secondary</u>	<u>Federal</u>	<u>Total</u>
100 <u>Personnel Services – Salaries</u>				
100 Personnel Services – Salaries				347,450.19
Total Personnel Services – Salaries				\$347,450.19
200 <u>Personnel Services – Employee Benefits</u>				
210 Group Insurance – Contracted Provider				82,159.20
220 Social Security Contributions				26,144.46
230 PSERS Retirement Contributions				118,841.57
240 Tuition Reimbursement				30,151.00
250 Unemployment Compensation				130.65
260 Workers' Compensation				6,655.35
Total Personnel Services – Employee Benefits				\$264,082.23
300 <u>Purchased Professional and Technical Services</u>				
330 Other Professional Services				42,406.03
Total Purchased Professional and Technical Services				\$42,406.03
500 <u>Other Purchased Services</u>				
549 Other Advertising/Public Relations				18,018.95
580 Travel				5,131.31
Total Other Purchased Services				\$23,150.26
600 <u>Supplies</u>				
610 General Supplies				3,515.44
630 Food				1,055.06
640 Books and Periodicals				227.62
Total Supplies				\$4,798.12
800 <u>Other Objects</u>				
810 Dues and Fees				21,634.21
890 Miscellaneous Expenditures				2,100.00
Total Other Objects				\$23,734.21
Total 2830 Staff Services				\$705,621.04

LEA : 112679002     York City SD

Printed 11/20/2020 9:08:04 AM

General Fund (10)				
2831 Supervision of Staff Services	<u>Elementary</u>	<u>Secondary</u>	<u>Federal</u>	<u>Total</u>
100 <u>Personnel Services – Salaries</u>				
100 Personnel Services – Salaries				307,450.19
Total Personnel Services – Salaries				\$307,450.19
200 <u>Personnel Services – Employee Benefits</u>				
210 Group Insurance – Contracted Provider				82,159.20
220 Social Security Contributions				23,103.43
230 PSERS Retirement Contributions				105,125.57
250 Unemployment Compensation				130.65
260 Workers' Compensation				5,535.28
Total Personnel Services – Employee Benefits				\$216,054.13
300 <u>Purchased Professional and Technical Services</u>				
330 Other Professional Services				42,406.03
Total Purchased Professional and Technical Services				\$42,406.03
500 <u>Other Purchased Services</u>				
549 Other Advertising/Public Relations				18,018.95
580 Travel				3,319.65
Total Other Purchased Services				\$21,338.60
600 <u>Supplies</u>				
610 General Supplies				3,515.44
630 Food				1,055.06
640 Books and Periodicals				227.62
Total Supplies				\$4,798.12
800 <u>Other Objects</u>				
810 Dues and Fees				20,064.21
890 Miscellaneous Expenditures				2,100.00
Total Other Objects				\$22,164.21
Total 2831 Supervision of Staff Services				\$614,211.28

LEA : 112679002     York City SD

Printed 11/20/2020 9:08:04 AM

General Fund (10)				
2834 Staff Development Services – Non-Instructional, Certified Staff Only	<u>Elementary</u>	<u>Secondary</u>	<u>Federal</u>	<u>Total</u>
100 <u>Personnel Services – Salaries</u>				
100 Personnel Services – Salaries				40,000.00
Total Personnel Services – Salaries				\$40,000.00
200 <u>Personnel Services – Employee Benefits</u>				
220 Social Security Contributions				3,041.03
230 PSERS Retirement Contributions				13,716.00
260 Workers’ Compensation				720.00
Total Personnel Services – Employee Benefits				\$17,477.03
500 <u>Other Purchased Services</u>				
580 Travel				580.19
Total Other Purchased Services				\$580.19
800 <u>Other Objects</u>				
810 Dues and Fees				270.00
Total Other Objects				\$270.00
Total 2834 Staff Development Services – Non-Instructional, Certified Staff Only				\$58,327.22

LEA : 112679002     York City SD

Printed 11/20/2020 9:08:04 AM

General Fund (10)				
2836 Staff Development Services – Non-Instructional, Non-Certified Staff Only	<u>Elementary</u>	<u>Secondary</u>	<u>Federal</u>	<u>Total</u>
200 <u>Personnel Services – Employee Benefits</u>				
240 Tuition Reimbursement				30,151.00
260 Workers' Compensation				400.07
Total Personnel Services – Employee Benefits				\$30,551.07
500 <u>Other Purchased Services</u>				
580 Travel				1,231.47
Total Other Purchased Services				\$1,231.47
800 <u>Other Objects</u>				
810 Dues and Fees				1,300.00
Total Other Objects				\$1,300.00
Total 2836 Staff Development Services – Non-Instructional, Non-Certified Staff Only				\$33,082.54



LEA : 112679002      York City SD

Printed 11/20/2020 9:08:04 AM

General Fund (10)				
2840 Data Processing Services	Elementary	Secondary	Federal	Total
<b>100 Personnel Services – Salaries</b>				
100 Personnel Services – Salaries				371,105.80
<b>Total Personnel Services – Salaries</b>				<b>\$371,105.80</b>
<b>200 Personnel Services – Employee Benefits</b>				
210 Group Insurance – Contracted Provider				116,033.25
220 Social Security Contributions				27,858.02
230 PSERS Retirement Contributions				126,028.72
250 Unemployment Compensation				199.78
260 Workers' Compensation				6,679.66
<b>Total Personnel Services – Employee Benefits</b>				<b>\$276,799.43</b>
<b>300 Purchased Professional and Technical Services</b>				
329 Professional Educational Services – Other				4,063.75
<b>Total Purchased Professional and Technical Services</b>				<b>\$4,063.75</b>
<b>400 Purchased Property Services</b>				
430 Repairs and Maintenance Services				25,343.33
<b>Total Purchased Property Services</b>				<b>\$25,343.33</b>
<b>500 Other Purchased Services</b>				
530 Communications				159,488.15
580 Travel				345.85
<b>Total Other Purchased Services</b>				<b>\$159,834.00</b>
<b>600 Supplies</b>				
610 General Supplies				134,889.95
640 Books and Periodicals				561.50
<b>Total Supplies</b>				<b>\$135,451.45</b>
<b>700 Property</b>				
752 Capital Equipment – Original and Additional				250,913.48
766 Capitalized Technology Equipment – Replacement				21,664.95
<b>Total Property</b>				<b>\$272,578.43</b>
<b>800 Other Objects</b>				
810 Dues and Fees				27.54
890 Miscellaneous Expenditures				(97,248.89)
<b>Total Other Objects</b>				<b>(\$97,221.35)</b>
<b>Total 2840 Data Processing Services</b>				<b>\$1,147,954.84</b>

LEA : 112679002      York City SD

Printed 11/20/2020 9:08:04 AM

General Fund (10)				
2850 State and Federal Agency Liaison Services	<u>Elementary</u>	<u>Secondary</u>	<u>Federal</u>	<u>Total</u>
100 <u>Personnel Services – Salaries</u>				
100 Personnel Services – Salaries				132,453.52
Total Personnel Services – Salaries				\$132,453.52
200 <u>Personnel Services – Employee Benefits</u>				
210 Group Insurance – Contracted Provider				49,654.02
220 Social Security Contributions				10,101.35
230 PSERS Retirement Contributions				44,954.18
250 Unemployment Compensation				28.00
260 Workers' Compensation				2,384.14
291 Other Retirement Plans				1,846.24
Total Personnel Services – Employee Benefits				\$108,967.93
300 <u>Purchased Professional and Technical Services</u>				
329 Professional Educational Services – Other				249,999.99
Total Purchased Professional and Technical Services				\$249,999.99
500 <u>Other Purchased Services</u>				
542 Public Relations Related to Federal Grant Awards				35.46
Total Other Purchased Services				\$35.46
800 <u>Other Objects</u>				
810 Dues and Fees				17.46
Total Other Objects				\$17.46
Total 2850 State and Federal Agency Liaison Services				\$491,474.36

LEA : 112679002      York City SD

Printed 11/20/2020 9:08:04 AM

General Fund (10)				
2900 Other Support Services	<u>Elementary</u>	<u>Secondary</u>	<u>Federal</u>	<u>Total</u>
300 <u>Purchased Professional and Technical Services</u>				
329 Professional Educational Services – Other				10,499.99
Total Purchased Professional and Technical Services				\$10,499.99
500 <u>Other Purchased Services</u>				
595 IU Payments By Withholding				12,354.55
Total Other Purchased Services				\$12,354.55
600 <u>Supplies</u>				
610 General Supplies			173.04	173.04
Total Supplies			\$173.04	\$173.04
Total 2900 Other Support Services			\$173.04	\$23,027.58

LEA : 112679002     York City SD

Printed 11/20/2020 9:08:04 AM

General Fund (10)					
2910 Support Services Not Listed Elsewhere In the 2000 Series		<u>Elementary</u>	<u>Secondary</u>	<u>Federal</u>	<u>Total</u>
300	<u>Purchased Professional and Technical Services</u>				
329	Professional Educational Services – Other				10,499.99
Total Purchased Professional and Technical Services					\$10,499.99
500	<u>Other Purchased Services</u>				
595	IU Payments By Withholding				12,354.55
Total Other Purchased Services					\$12,354.55
600	<u>Supplies</u>				
610	General Supplies			173.04	173.04
Total Supplies					\$173.04
Total 2910 Support Services Not Listed Elsewhere In the 2000 Series					\$23,027.58

LEA : 112679002      York City SD

Printed 11/20/2020 9:08:19 AM

<b>General Fund (10)</b>	
<b>3000 Operation of Non-Instructional Services</b>	<b><u>Total</u></b>
<b>100 <u>Personnel Services – Salaries</u></b>	
100 Personnel Services – Salaries	604,273.88
<b>Total Personnel Services – Salaries</b>	<b>\$604,273.88</b>
<b>200 <u>Personnel Services – Employee Benefits</u></b>	
210 Group Insurance – Contracted Provider	110,831.44
220 Social Security Contributions	45,596.34
230 PSERS Retirement Contributions	184,574.37
250 Unemployment Compensation	548.17
260 Workers' Compensation	10,871.71
<b>Total Personnel Services – Employee Benefits</b>	<b>\$352,422.03</b>
<b>300 <u>Purchased Professional and Technical Services</u></b>	
329 Professional Educational Services – Other	3,575.84
330 Other Professional Services	24,348.50
<b>Total Purchased Professional and Technical Services</b>	<b>\$27,924.34</b>
<b>400 <u>Purchased Property Services</u></b>	
410 Cleaning Services	2,754.40
430 Repairs and Maintenance Services	11,168.12
<b>Total Purchased Property Services</b>	<b>\$13,922.52</b>
<b>500 <u>Other Purchased Services</u></b>	
510 Student Transportation Services	48,407.06
520 Insurance – General	12,900.00
580 Travel	1,964.99
599 Other Miscellaneous Purchased Services	10,293.54
<b>Total Other Purchased Services</b>	<b>\$73,565.59</b>
<b>600 <u>Supplies</u></b>	
610 General Supplies	66,521.16
630 Food	4,018.49
<b>Total Supplies</b>	<b>\$70,539.65</b>
<b>800 <u>Other Objects</u></b>	
810 Dues and Fees	3,351.19
890 Miscellaneous Expenditures	7,269.25
<b>Total Other Objects</b>	<b>\$10,620.44</b>
<b>Total 3000 Operation of Non-Instructional Services</b>	<b>\$1,153,268.45</b>

LEA : 112679002      York City SD

Printed 11/20/2020 9:08:19 AM

<b>General Fund (10)</b>				
<b>3200 Student Activities</b>	<b><u>Elementary</u></b>	<b><u>Secondary</u></b>	<b><u>Federal</u></b>	<b><u>Total</u></b>
<b>100 <u>Personnel Services – Salaries</u></b>				
100 Personnel Services – Salaries				427,741.27
<b>Total Personnel Services – Salaries</b>				<b>\$427,741.27</b>
<b>200 <u>Personnel Services – Employee Benefits</u></b>				
210 Group Insurance – Contracted Provider				29,751.05
220 Social Security Contributions				32,336.64
230 PSERS Retirement Contributions				145,704.88
250 Unemployment Compensation				447.44
260 Workers' Compensation				7,694.02
<b>Total Personnel Services – Employee Benefits</b>				<b>\$215,934.03</b>
<b>300 <u>Purchased Professional and Technical Services</u></b>				
330 Other Professional Services				23,973.50
<b>Total Purchased Professional and Technical Services</b>				<b>\$23,973.50</b>
<b>400 <u>Purchased Property Services</u></b>				
410 Cleaning Services				2,754.40
430 Repairs and Maintenance Services				11,168.12
<b>Total Purchased Property Services</b>				<b>\$13,922.52</b>
<b>500 <u>Other Purchased Services</u></b>				
510 Student Transportation Services				48,407.06
520 Insurance – General				12,900.00
580 Travel				1,161.10
<b>Total Other Purchased Services</b>				<b>\$62,468.16</b>
<b>600 <u>Supplies</u></b>				
610 General Supplies				55,706.69
630 Food				(1,926.97)
<b>Total Supplies</b>				<b>\$53,779.72</b>
<b>800 <u>Other Objects</u></b>				
810 Dues and Fees				3,351.19
890 Miscellaneous Expenditures				7,269.25
<b>Total Other Objects</b>				<b>\$10,620.44</b>
<b>Total 3200 Student Activities</b>				<b>\$808,439.64</b>

LEA : 112679002      York City SD

Printed 11/20/2020 9:08:19 AM

General Fund (10)				
3300 Community Services				
	<u>Elementary</u>	<u>Secondary</u>	<u>Federal</u>	<u>Total</u>
100 <u>Personnel Services – Salaries</u>				
100 Personnel Services – Salaries			83,296.36	176,532.61
Total Personnel Services – Salaries			\$83,296.36	\$176,532.61
200 <u>Personnel Services – Employee Benefits</u>				
210 Group Insurance – Contracted Provider			50,651.02	81,080.39
220 Social Security Contributions			6,231.16	13,259.70
230 PSERS Retirement Contributions			7,140.60	38,869.49
250 Unemployment Compensation			44.67	100.73
260 Workers' Compensation			1,499.18	3,177.69
Total Personnel Services – Employee Benefits			\$65,566.63	\$136,488.00
300 <u>Purchased Professional and Technical Services</u>				
329 Professional Educational Services – Other			3,575.84	3,575.84
330 Other Professional Services			375.00	375.00
Total Purchased Professional and Technical Services			\$3,950.84	\$3,950.84
500 <u>Other Purchased Services</u>				
580 Travel			335.11	803.89
599 Other Miscellaneous Purchased Services			10,293.54	10,293.54
Total Other Purchased Services			\$10,628.65	\$11,097.43
600 <u>Supplies</u>				
610 General Supplies			10,814.47	10,814.47
630 Food			5,945.46	5,945.46
Total Supplies			\$16,759.93	\$16,759.93
Total 3300 Community Services			\$180,202.41	\$344,828.81

LEA : 112679002    York City SD

Printed 11/20/2020 9:08:43 AM

General Fund (10)

5000 Other Expenditures and Financing Uses		<u>Total</u>
800 <u>Other Objects</u>		
830 Interest		3,058,816.90
880 Refunds of Prior Years' Receipts		189,436.32
Total Other Objects		\$3,248,253.22
900 <u>Other Uses of Funds</u>		
910 Redemption of Principal		27,562,058.82
Total Other Uses of Funds		\$27,562,058.82
Total 5000 Other Expenditures and Financing Uses		\$30,810,312.04



LEA : 112679002     York City SD

Printed 11/20/2020 9:08:43 AM

General Fund (10)				
5100 Debt Service / Other Expenditures and Financing Uses	<u>Elementary</u>	<u>Secondary</u>	<u>Federal</u>	<u>Total</u>
800 <u>Other Objects</u>				
830 Interest				3,058,816.90
880 Refunds of Prior Years' Receipts				189,436.32
Total Other Objects				\$3,248,253.22
900 <u>Other Uses of Funds</u>				
910 Redemption of Principal				27,562,058.82
Total Other Uses of Funds				\$27,562,058.82
Total 5100 Debt Service / Other Expenditures and Financing Uses				\$30,810,312.04

LEA : 112679002    York City SD

Printed 11/20/2020 9:08:43 AM

General Fund (10)

5110 Debt Service	<u>Elementary</u>	<u>Secondary</u>	<u>Federal</u>	<u>Total</u>
800 <u>Other Objects</u>				
830 Interest				2,993,071.27
Total Other Objects				\$2,993,071.27
900 <u>Other Uses of Funds</u>				
910 Redemption of Principal				8,512,058.82
Total Other Uses of Funds				\$8,512,058.82
Total 5110 Debt Service				\$11,505,130.09

LEA : 112679002    York City SD

Printed 11/20/2020 9:08:43 AM

General Fund (10)

5120 Debt Service – Refunded Bonds	<u>Elementary</u>	<u>Secondary</u>	<u>Federal</u>	<u>Total</u>
800 <u>Other Objects</u>				
830 Interest				65,745.63
Total Other Objects				\$65,745.63
900 <u>Other Uses of Funds</u>				
910 Redemption of Principal				19,050,000.00
Total Other Uses of Funds				\$19,050,000.00
Total 5120 Debt Service – Refunded Bonds				\$19,115,745.63

LEA : 112679002    York City SD

Printed 11/20/2020 9:08:43 AM

General Fund (10)

5130 Refund of Prior Year Revenues / Receipts	<u>Elementary</u>	<u>Secondary</u>	<u>Federal</u>	<u>Total</u>
800 <u>Other Objects</u>				
880 Refunds of Prior Years' Receipts				189,436.32
Total Other Objects				\$189,436.32
Total 5130 Refund of Prior Year Revenues / Receipts				\$189,436.32

LEA : 112679002     York City SD

Printed 11/20/2020 9:08:11 AM

Capital Reserve Fund - § 1431 (32)

		<u>Total</u>
<b>2000 Support Services</b>		
<b>400 <u>Purchased Property Services</u></b>		
430 Repairs and Maintenance Services		869,325.00
450 Construction Services		467,370.00
<b>Total Purchased Property Services</b>		<b>\$1,336,695.00</b>
<b>700 <u>Property</u></b>		
752 Capital Equipment – Original and Additional		77,834.58
<b>Total Property</b>		<b>\$77,834.58</b>
<b>800 <u>Other Objects</u></b>		
810 Dues and Fees		18,566.90
<b>Total Other Objects</b>		<b>\$18,566.90</b>
<b>Total 2000 Support Services</b>		<b>\$1,433,096.48</b>

LEA : 112679002     York City SD

Printed 11/20/2020 9:08:11 AM

Capital Reserve Fund - § 1431 (32)

2600 Operation and Maintenance of Plant Services

Elementary                      Secondary                      Federal                      Total

400 <u>Purchased Property Services</u>				
430 Repairs and Maintenance Services				869,325.00
450 Construction Services				467,370.00
<b>Total Purchased Property Services</b>				<b>\$1,336,695.00</b>
700 <u>Property</u>				
752 Capital Equipment – Original and Additional				77,834.58
<b>Total Property</b>				<b>\$77,834.58</b>
800 <u>Other Objects</u>				
810 Dues and Fees				18,566.90
<b>Total Other Objects</b>				<b>\$18,566.90</b>
<b>Total 2600 Operation and Maintenance of Plant Services</b>				<b>\$1,433,096.48</b>

LEA : 112679002     York City SD

Printed 11/20/2020 9:08:11 AM

Capital Reserve Fund - § 1431 (32)

2620 Operation of Buildings Services	<u>Elementary</u>	<u>Secondary</u>	<u>Federal</u>	<u>Total</u>
400 <u>Purchased Property Services</u>				
430 Repairs and Maintenance Services				869,325.00
450 Construction Services				467,370.00
<b>Total Purchased Property Services</b>				<b>\$1,336,695.00</b>
700 <u>Property</u>				
752 Capital Equipment – Original and Additional				77,834.58
<b>Total Property</b>				<b>\$77,834.58</b>
800 <u>Other Objects</u>				
810 Dues and Fees				18,566.90
<b>Total Other Objects</b>				<b>\$18,566.90</b>
<b>Total 2620 Operation of Buildings Services</b>				<b>\$1,433,096.48</b>

LEA : 112679002     York City SD

Printed 11/20/2020 9:08:31 AM

Capital Reserve Fund - § 1431 (32)

4000 Facilities Acquisition, Construction and Improvement Services

Total

400 Purchased Property Services

450 Construction Services	11,318.00
---------------------------	-----------

Total Purchased Property Services	\$11,318.00
-----------------------------------	-------------

Total 4000 Facilities Acquisition, Construction and Improvement Services	\$11,318.00
--	-------------



LEA : 112679002     York City SD

Printed 11/20/2020 9:08:31 AM

Capital Reserve Fund - § 1431 (32)				
4600 Existing Building Improvement Services	<u>Elementary</u>	<u>Secondary</u>	<u>Federal</u>	<u>Total</u>
400 <u>Purchased Property Services</u>				
450 Construction Services				11,318.00
Total Purchased Property Services				\$11,318.00
Total 4600 Existing Building Improvement Services				\$11,318.00

LEA : 112679002     York City SD

Printed 11/20/2020 9:09:10 AM

	General Fund(10)	Student Sponsored Activity Fund(21)	Public Purpose Trust(27)	Other Compt Approved (28)	Athletic / Activity(29)
<b>1000 Instruction</b>					
1100 Regular Programs - Elementary / Secondary	63,766,340.15				
1200 Special Programs - Elementary / Secondary	26,503,177.72				
1300 Vocational Education	5,103,406.16				
1400 Other Instructional Programs - Elementary / Secondary	2,139,037.39				
1500 Nonpublic School Programs	200,381.20				
1600 Adult Education Programs	304,983.16				
1800 Pre-Kindergarten	2,643,809.46				
<b>Total Instruction</b>	<b>\$100,661,135.24</b>				
<b>2000 Support Services</b>					
2100 Support Services - Students	6,039,157.53				
2200 Support Services - Instructional Staff	3,679,350.03				
2300 Support Services - Administration	8,483,322.06				
2400 Support Services - Pupil Health	1,908,782.31				
2500 Support Services - Business	1,286,938.18				
2600 Operation and Maintenance of Plant Services	10,853,537.34				
2700 Student Transportation Services	2,554,200.88				
2800 Support Services - Central	2,345,050.24				
2900 Other Support Services	23,027.58				
<b>Total Support Services</b>	<b>\$37,173,366.15</b>				
<b>3000 Operation of Non-Instructional Services</b>					
3200 Student Activities	808,439.64				
3300 Community Services	344,828.81				
<b>Total Operation of Non-Instructional Services</b>	<b>\$1,153,268.45</b>				
<b>4000 Facilities Acquisition, Construction and Improvement Services</b>					
4600 Existing Building Improvement Services					
<b>Total Facilities Acquisition, Construction and Improvement Services</b>					
<b>5000 Other Expenditures and Financing Uses</b>					
5100 Debt Service / Other Expenditures and Financing Uses	30,810,312.04				
<b>Total Other Expenditures and Financing Uses</b>	<b>\$30,810,312.04</b>				
<b>TOTAL ACTUAL EXPENDITURES &amp; OTHER FINANCING USES</b>	<b>\$169,798,081.88</b>				

LEA : 112679002    York City SD

Printed 11/20/2020 9:09:10 AM

	<u>Capital Reserve (690.1850)(31)</u>	<u>Capital Reserve (1431)(32)</u>	<u>Other Capital Projects Fund(39)</u>	<u>Debt Service(40)</u>	<u>Permanent(90)</u>
<b>1000 <u>Instruction</u></b>					
1100 Regular Programs - Elementary / Secondary					
1200 Special Programs - Elementary / Secondary					
1300 Vocational Education					
1400 Other Instructional Programs - Elementary / Secondary					
1500 Nonpublic School Programs					
1600 Adult Education Programs					
1800 Pre-Kindergarten					
<b>Total Instruction</b>					
<b>2000 <u>Support Services</u></b>					
2100 Support Services - Students					
2200 Support Services - Instructional Staff					
2300 Support Services - Administration					
2400 Support Services - Pupil Health					
2500 Support Services - Business					
2600 Operation and Maintenance of Plant Services		1,433,096.48			
2700 Student Transportation Services					
2800 Support Services - Central					
2900 Other Support Services					
<b>Total Support Services</b>		<b>\$1,433,096.48</b>			
<b>3000 <u>Operation of Non-Instructional Services</u></b>					
3200 Student Activities					
3300 Community Services					
<b>Total Operation of Non-Instructional Services</b>					
<b>4000 <u>Facilities Acquisition, Construction and Improvement Services</u></b>					
4600 Existing Building Improvement Services		11,318.00			
<b>Total Facilities Acquisition, Construction and Improvement Services</b>		<b>\$11,318.00</b>			
<b>5000 <u>Other Expenditures and Financing Uses</u></b>					
5100 Debt Service / Other Expenditures and Financing Uses					
<b>Total Other Expenditures and Financing Uses</b>					
<b>TOTAL ACTUAL EXPENDITURES &amp; OTHER FINANCING USES</b>		<b>\$1,444,414.48</b>			

LEA : 112679002    York City SD

Printed 11/20/2020 9:09:10 AM

	<u>Total</u>
<b>1000 <u>Instruction</u></b>	
1100 Regular Programs - Elementary / Secondary	63,766,340.15
1200 Special Programs - Elementary / Secondary	26,503,177.72
1300 Vocational Education	5,103,406.16
1400 Other Instructional Programs - Elementary / Secondary	2,139,037.39
1500 Nonpublic School Programs	200,381.20
1600 Adult Education Programs	304,983.16
1800 Pre-Kindergarten	2,643,809.46
<b>Total Instruction</b>	<b>\$100,661,135.24</b>
<b>2000 <u>Support Services</u></b>	
2100 Support Services - Students	6,039,157.53
2200 Support Services - Instructional Staff	3,679,350.03
2300 Support Services - Administration	8,483,322.06
2400 Support Services - Pupil Health	1,908,782.31
2500 Support Services - Business	1,286,938.18
2600 Operation and Maintenance of Plant Services	12,286,633.82
2700 Student Transportation Services	2,554,200.88
2800 Support Services - Central	2,345,050.24
2900 Other Support Services	23,027.58
<b>Total Support Services</b>	<b>\$38,606,462.63</b>
<b>3000 <u>Operation of Non-Instructional Services</u></b>	
3200 Student Activities	808,439.64
3300 Community Services	344,828.81
<b>Total Operation of Non-Instructional Services</b>	<b>\$1,153,268.45</b>
<b>4000 <u>Facilities Acquisition, Construction and Improvement Services</u></b>	
4600 Existing Building Improvement Services	11,318.00
<b>Total Facilities Acquisition, Construction and Improvement Services</b>	<b>\$11,318.00</b>
<b>5000 <u>Other Expenditures and Financing Uses</u></b>	
5100 Debt Service / Other Expenditures and Financing Uses	30,810,312.04
<b>Total Other Expenditures and Financing Uses</b>	<b>\$30,810,312.04</b>
<b>TOTAL ACTUAL EXPENDITURES &amp; OTHER FINANCING USES</b>	<b>\$171,242,496.36</b>

LEA : 112679002     York City SD

Printed 11/20/2020 9:09:29 AM

PSERS Salary Data (Salary Data should relate to the General Fund only)

Amount	Description	Amount
	Total Salary Base for salaries subject to PSERS withholding	51,678,512.00
	Total Federally Funded salaries subject to PSERS withholding	2,735,116.00

Title I Expenditure Data

Amount	Description	Amount
	Expenditures Funded with Current Title I Funds	3,174,507.00
	Expenditures Funded with Carry over Title I Funds	1,140,146.00
Total Title I Expenditure Data		\$4,314,653.00

Benefits for Staff Relative to Collective Bargaining Agreements

	OBJECT	COVERED	NOT COVERED	TOTAL
10 General Fund	No Self Insurance data to report			
	211 Medical Insurance	10,029,208.00	72,864.00	10,102,072.00
	212 Dental Insurance	387,627.00	3,432.00	391,059.00
	215 Eye Care Insurance			
	216 Prescription Insurance	2,507,302.00	18,216.00	2,525,518.00
	271 Self-Insurance Medical Benefits			
	272 Self-Insurance Dental Benefits			
	275 Self-Insurance Eye Care Benefits			
	276 Self-Insurance Prescription Benefits			
	FUND TOTAL	\$12,924,137.00	\$94,512.00	\$13,018,649.00
50 Enterprise Fund	No Self Insurance data to report			
	211 Medical Insurance	383,697.00		383,697.00
	212 Dental Insurance	14,209.00		14,209.00
	215 Eye Care Insurance			
	216 Prescription Insurance	95,924.00		95,924.00
	271 Self-Insurance Medical Benefits			
	272 Self-Insurance Dental Benefits			
	275 Self-Insurance Eye Care Benefits			
	276 Self-Insurance Prescription Benefits			
	FUND TOTAL	\$493,830.00		\$493,830.00
60 Internal Service Fund	No Self Insurance data to report			
	211 Medical Insurance			
	212 Dental Insurance			
	215 Eye Care Insurance			
	216 Prescription Insurance			
	271 Self-Insurance Medical Benefits			
	272 Self-Insurance Dental Benefits			
	275 Self-Insurance Eye Care Benefits			
	276 Self-Insurance Prescription Benefits			
	FUND TOTAL			
Total of All Funds		\$13,417,967.00	\$94,512.00	\$13,512,479.00

LEA : 112679002     York City SD

Printed 11/20/2020 9:10:04 AM

Function	Special Education (Prior Year)	Nonspecial Education (Prior Year)	Total (Prior Year)	Special Education (Current Year)	Nonspecial Education (Current Year)	Total (Current Year)
2120 Guidance Services		1,301,587.22	1,301,587.22		1,339,866.00	1,339,866.00
2140 Psychological Services	1,776,629.58		1,776,629.58	1,552,875.85		1,552,875.85
2150 Speech Pathology and Audiology Services						
2160 Social Work Services	1,674,874.63		1,674,874.63	1,855,956.37		1,855,956.37
2260 Instruction and Curriculum Development Services		1,901,693.92	1,901,693.92		2,022,117.65	2,022,117.65
2350 Legal and Accounting Services		284,652.72	284,652.72		200,893.06	200,893.06
2420 Medical Services		142,161.96	142,161.96		270,161.75	270,161.75
2440 Nursing Services	328,187.16	1,312,748.66	1,640,935.82	306,641.57	1,226,566.29	1,533,207.86
2700 Student Transportation Services	2,649,344.14	375,872.86	3,025,217.00	2,097,467.22	313,378.49	2,410,845.71
Total	\$6,429,035.51	\$5,318,717.34	\$11,747,752.85	\$5,812,941.01	\$5,372,983.24	\$11,185,924.25

LEA : 112679002     York City SD

Printed 11/20/2020 9:10:19 AM

(PRINCIPAL AMOUNTS ONLY)

**GOVERNMENTAL FUNDS/ ACTIVITIES**

	Short-Term Borrowing	General Obligation Bonds/Notes	Authority Building Obligations	Other Long-Term Debt	Other Post- Employment Benefits (OPEB)	Compensated Absences	Net Pension Liability	Total
1. Debt at Beginning of Fiscal Year		74,860,529.00		1,500,000.00	15,240,780.00	1,929,771.00	149,612,800.00	243,143,880.00
2. Additional Debt Incurred During Year		17,470,000.00				442,476.00		17,912,476.00
3. Retirements and Repayments		27,262,059.00		300,000.00				27,562,059.00
4. Debt at End of Fiscal Year		65,068,470.00		1,200,000.00	15,240,780.00	2,372,247.00	149,612,800.00	233,494,297.00
5. Accreted Interest at End Of Fiscal Year								
6. Total Debt and Accreted Interest		65,068,470.00		1,200,000.00	15,240,780.00	2,372,247.00	149,612,800.00	233,494,297.00
7. Current Portion P&I - Due within 1 year		12,198,612.00		300,000.00				12,498,612.00
8. Interest Paid during current fiscal year		2,993,071.23						2,993,071.23

(PRINCIPAL AMOUNTS ONLY)

**PROPRIETARY FUNDS**

	Short-Term Borrowing	General Obligation Bonds/Notes	Authority Building Obligations	Other Long-Term Debt	Other Post- Employment Benefits (OPEB)	Compensated Absences	Net Pension Liability	Total
1. Debt at Beginning of Fiscal Year					471,364.00	28,101.00	4,627,000.00	5,126,465.00
2. Additional Debt Incurred During Year						4,136.00		4,136.00
3. Retirements and Repayments								
4. Debt at End of Fiscal Year					471,364.00	32,237.00	4,627,000.00	5,130,601.00
5. Accreted Interest at End Of Fiscal Year								
6. Total Debt and Accreted Interest					471,364.00	32,237.00	4,627,000.00	5,130,601.00
7. Current Portion P&I - Due within 1 year								
8. Interest Paid during current fiscal year								



LEA : 112679002    York City SD

Printed 11/20/2020 9:10:19 AM

Total Principal and Interest Payments Made by Your School - All Funds

Function	Fund		Principal (910)	Principal (920)	Interest (830)	Total (Principal +Interest)	Misc Other Uses (990)
5110	10	General Fund	8,512,058.82		2,993,071.27	11,505,130.09	
5110	20	Special Revenue Funds					
5110	30	Capital Projects Funds					
5110	40	Debt Service Fund					
5110	90	Permanent Fund					
5120	10	General Fund	19,050,000.00		65,745.63	19,115,745.63	
5120	20	Special Revenue Funds					
5120	30	Capital Projects Funds					
5120	40	Debt Service Fund					
Total Debt Payments - Governmental Funds			\$27,562,058.82		\$3,058,816.90	\$30,620,875.72	
Function	Fund		Principal (910)	Principal (920)	Interest (830)	Total (Principal +Interest)	
5110	50	Enterprise Fund					
5110	60	Internal Service Fund					
5120	50	Enterprise Fund					
5120	60	Internal Service Fund					
Total Debt Payments - Proprietary Funds							

LEA : 112679002     York City SD

Printed 11/20/2020 9:10:19 AM

**Debt Details**  
**Governmental Funds/ Activities**

Debt Category	Debt Issue Date (MM/YYYY)	Principal Amounts Only				Current Portion Due Within One Year (Principal and Interest)	Interest Paid During Fiscal Year
		Debt at Beginning of Fiscal Year	Additions	Reductions / Repayments	Debt at End of Fiscal Year		
General Obligation Bonds/Notes – CIB	02/2020		17,470,000.00	370,000.00	17,100,000.00	1,273,120.00	215,498.00
General Obligation Bonds/Notes – CIB	05/2019	8,560,000.00		370,000.00	8,190,000.00	1,076,147.50	183,547.50
General Obligation Bonds/Notes – CIB	02/2017	9,715,000.00		9,715,000.00			109,293.75
General Obligation Bonds/Notes – CIB	05/2017	9,335,000.00		9,335,000.00			128,356.25
General Obligation Bonds/Notes – CIB	04/2016	5,495,000.00		970,000.00	4,525,000.00	1,111,950.00	150,750.00
General Obligation Bonds/Notes – CIB	03/2015	5,515,000.00		995,000.00	4,520,000.00	1,118,480.00	132,360.00
General Obligation Bonds/Notes – CIB	11/2013	4,095,000.00		5,000.00	4,090,000.00	137,875.00	133,000.00
General Obligation Bonds/Notes – CIB	05/2013	4,970,000.00		1,160,000.00	3,810,000.00	1,315,087.50	131,187.50
General Obligation Bonds/Notes – CIB	11/2012	240,000.00		135,000.00	105,000.00	108,150.00	6,727.50
General Obligation Bonds/Notes – CIB	05/2011	7,990,000.00		985,000.00	7,005,000.00	1,473,340.00	488,340.00
General Obligation Bonds/Notes – CIB	10/2010	13,023,529.00		1,447,059.00	11,576,470.00	2,677,059.00	1,230,000.00
General Obligation Bonds/Notes – CIB	07/2009	5,922,000.00		1,775,000.00	4,147,000.00	1,907,403.00	84,010.73
Other Long Term Debt/Liabilities		1,500,000.00		300,000.00	1,200,000.00	300,000.00	
Compensated Absences		1,929,771.00	442,476.00		2,372,247.00		
Other Post-Employment Benefits (OPEB)		15,240,780.00			15,240,780.00		
Net Pension Liability		149,612,800.00			149,612,800.00		
<b>Totals for Debt Entered:</b>		<b>\$243,143,880.00</b>	<b>\$17,912,476.00</b>	<b>\$27,562,059.00</b>	<b>\$233,494,297.00</b>	<b>\$12,498,612.00</b>	<b>\$2,993,071.23</b>

**Bond Details**  
**Proprietary Funds**

Debt Category	Debt Issue Date (MM/YYYY)	Principal Amounts Only				Current Portion Due Within One Year (Principal and Interest)	Interest Paid During Fiscal Year
		Debt at Beginning of Fiscal Year	Additions	Reductions / Repayments	Debt at End of Fiscal Year		
Compensated Absences		28,101.00	4,136.00		32,237.00		
Other Post-Employment Benefits (OPEB)		471,364.00			471,364.00		
Net Pension Liability		4,627,000.00			4,627,000.00		
<b>Totals for Debt Entered:</b>		<b>\$5,126,465.00</b>	<b>\$4,136.00</b>		<b>\$5,130,601.00</b>		

LEA : 112679002     York City SD

Printed 11/20/2020 9:10:26 AM

General Fund (10)

Section 1: Tuition/Purchased Services as Reported within Expenditure Detail	Amount
Tuition Reported in General Fund Expenditures 1000-560	31,771,222.06
Purchased Services in General Fund Expenditures 1000-594 and 1000-597	391,388.64
<b>Section 1 Total</b>	<b>\$32,162,610.70</b>

Section 2: Tuition Paid to Institution Types During Fiscal Year	Tuition Paid For Nonspecial Education	Tuition Paid For Special Education	Total
1    1306 Institutions			
2    Institutionalized Children's Programs			
3    Juveniles Incarcerated in Adult Facilities			
4    Residential Treatment Facilities			
5    Other Local Education Agencies	104,813.48	309,871.65	414,685.13
6    Brick and Mortar Charter Schools	12,509,531.51	4,880,195.92	17,389,727.43
7    Cyber Charter Schools	4,159,841.43	3,109,772.25	7,269,613.68
8    Career and Technology Centers	4,978,697.62		4,978,697.62
9    Approved Private Schools			
10   PA Chartered Schools for the Deaf and Blind			
11   Private Residential Rehabilitative Institutions	195,945.51	880,543.41	1,076,488.92
12   Juvenile Detention Centers	309,365.47		309,365.47
13   Special Program Jointures			
14   Other Tuition Not Included Elsewhere In This Section	151,028.90	573,003.55	724,032.45
<b>Section 2 Total</b>	<b>\$22,409,223.92</b>	<b>\$9,753,386.78</b>	<b>\$32,162,610.70</b>

LEA : 112679002      York City SD

Printed 11/20/2020 9:10:33 AM

Food Service / Cafeteria Operations Fund (51)

3000 Operation of Non-Instructional Services		Total
100 <u>Personnel Services – Salaries</u>		
100 Personnel Services – Salaries		1,316,116.00
Total Personnel Services – Salaries		\$1,316,116.00
200 <u>Personnel Services – Employee Benefits</u>		
210 Group Insurance – Contracted Provider		494,594.00
220 Social Security Contributions		98,409.00
230 PSERS Retirement Contributions		450,398.00
250 Unemployment Compensation		1,907.00
260 Workers' Compensation		23,689.00
299 All Other Employee Benefits		4,136.00
Total Personnel Services – Employee Benefits		\$1,073,133.00
400 <u>Purchased Property Services</u>		
410 Cleaning Services		1,351.00
430 Repairs and Maintenance Services		72,567.00
Total Purchased Property Services		\$73,918.00
500 <u>Other Purchased Services</u>		
520 Insurance – General		14,790.00
530 Communications		1,726.00
540 Advertising		867.00
542 Public Relations Related to Federal Grant Awards		2,745.00
570 Food Service Management		1,924,324.00
580 Travel		878.00
599 Other Miscellaneous Purchased Services		6,927.00
Total Other Purchased Services		\$1,952,257.00
600 <u>Supplies</u>		
610 General Supplies		117,117.00
620 Energy		2,839.00
630 Food		355,269.00
Total Supplies		\$475,225.00
700 <u>Property</u>		
740 Depreciation		41,761.00
Total Property		\$41,761.00
800 <u>Other Objects</u>		
810 Dues and Fees		5,508.00
890 Miscellaneous Expenditures		35,736.00
Total Other Objects		\$41,244.00
Total 3000 Operation of Non-Instructional Services		\$4,973,654.00

LEA : 112679002      York City SD

Printed 11/20/2020 9:10:33 AM

Food Service / Cafeteria Operations Fund (51)

3100 Food Services	Elementary	Secondary	Federal	Total
100 <u>Personnel Services – Salaries</u>				
100 Personnel Services – Salaries			1,150,008.00	1,316,116.00
<b>Total Personnel Services – Salaries</b>			<b>\$1,150,008.00</b>	<b>\$1,316,116.00</b>
200 <u>Personnel Services – Employee Benefits</u>				
210 Group Insurance – Contracted Provider			432,171.00	494,594.00
220 Social Security Contributions			85,989.00	98,409.00
230 PSERS Retirement Contributions			393,553.00	450,398.00
250 Unemployment Compensation			1,666.00	1,907.00
260 Workers' Compensation			20,699.00	23,689.00
299 All Other Employee Benefits			3,614.00	4,136.00
<b>Total Personnel Services – Employee Benefits</b>			<b>\$937,692.00</b>	<b>\$1,073,133.00</b>
400 <u>Purchased Property Services</u>				
410 Cleaning Services			1,180.00	1,351.00
430 Repairs and Maintenance Services			63,408.00	72,567.00
<b>Total Purchased Property Services</b>			<b>\$64,588.00</b>	<b>\$73,918.00</b>
500 <u>Other Purchased Services</u>				
520 Insurance – General			12,924.00	14,790.00
530 Communications			1,508.00	1,726.00
540 Advertising			757.00	867.00
542 Public Relations Related to Federal Grant Awards			2,398.00	2,745.00
570 Food Service Management			1,681,454.00	1,924,324.00
580 Travel			767.00	878.00
599 Other Miscellaneous Purchased Services			6,053.00	6,927.00
<b>Total Other Purchased Services</b>			<b>\$1,705,861.00</b>	<b>\$1,952,257.00</b>
600 <u>Supplies</u>				
610 General Supplies			102,336.00	117,117.00
620 Energy			2,481.00	2,839.00
630 Food			310,431.00	355,269.00
<b>Total Supplies</b>			<b>\$415,248.00</b>	<b>\$475,225.00</b>
700 <u>Property</u>				
740 Depreciation			36,490.00	41,761.00
<b>Total Property</b>			<b>\$36,490.00</b>	<b>\$41,761.00</b>
800 <u>Other Objects</u>				
810 Dues and Fees			4,813.00	5,508.00
890 Miscellaneous Expenditures			31,226.00	35,736.00
<b>Total Other Objects</b>			<b>\$36,039.00</b>	<b>\$41,244.00</b>
<b>Total 3100 Food Services</b>			<b>\$4,345,926.00</b>	<b>\$4,973,654.00</b>

	<u>Food Service(51)</u>	<u>Child Care Operations(52)</u>	<u>Other Enterprise(58)</u>	<u>Internal Service(60)</u>	<u>Total</u>
<b>3000 <u>Operation of Non-Instructional Services</u></b>					
3100 Food Services	4,973,654.00				4,973,654.00
<b>Total Operation of Non-Instructional Services</b>	<b>\$4,973,654.00</b>				<b>\$4,973,654.00</b>
<b>TOTAL ACTUAL EXPENDITURES &amp; OTHER FINANCING USES</b>	<b>\$4,973,654.00</b>				<b>\$4,973,654.00</b>

LEA : 112679002 York City SD

Printed 11/20/2020 9:10:54 AM

Fund	School	School Number	Local Personnel	Local Nonpersonnel	State Personnel	State Nonpersonnel	Federal Personnel	Federal Nonpersonnel	Total	Explanation
10										
	Davis Sch	8237	1,765,133.00	1,088,559.00	4,871,768.00	3,004,422.00	423,632.00	261,254.00	11,414,768.00	
	Devers Sch	8238	2,457,146.00	1,515,323.00	6,781,722.00	4,182,292.00	589,715.00	363,678.00	15,889,876.00	
	Edgar Fahs Smith STEAM Academy	8398	1,340,565.00	826,727.00	3,699,960.00	2,281,767.00	321,736.00	198,415.00	8,669,170.00	
	Ferguson Sch	8239	2,393,628.00	1,476,151.00	6,606,413.00	4,074,178.00	574,471.00	354,276.00	15,479,117.00	
	Goode Sch	8240	2,136,212.00	1,317,403.00	5,895,946.00	3,636,033.00	512,691.00	316,177.00	13,814,462.00	
	Hannah Penn	8291	2,219,789.00	1,368,945.00	6,126,617.00	3,778,288.00	532,749.00	328,547.00	14,354,935.00	
	Jackson Sch	8241	2,066,008.00	1,274,108.00	5,702,183.00	3,516,539.00	495,842.00	305,786.00	13,360,466.00	
	McKinley Sch	8242	2,066,008.00	1,274,108.00	5,702,183.00	3,516,539.00	495,842.00	305,786.00	13,360,466.00	
	William Penn SHS	4647	5,048,015.00	3,113,114.00	13,932,519.00	8,592,191.00	1,211,524.00	747,147.00	32,644,510.00	
Total			21,492,504.00	13,254,438.00	59,319,311.00	36,582,249.00	5,158,202.00	3,181,066.00	138,987,770.00	

	<u>Nonspecial Education</u>	<u>Special Education</u>
<b>1000 Instruction</b>		
1400 Other Instructional Programs - Elementary / Secondary	309,365.00	
<b>Total Instruction</b>	<b>\$309,365.00</b>	
<b>TOTAL ACTUAL EXPENDITURES &amp; OTHER FINANCING USES</b>	<b>\$309,365.00</b>	



LEA : 112679002    York City SD

Printed 11/20/2020 9:11:27 AM

1000 Instruction

500 Other Purchased Services

561 Tuition To Other School Districts Within the State	309,365.00
<b>Total Other Purchased Services</b>	<b>\$309,365.00</b>
<b>Total 1000 Instruction</b>	<b>\$309,365.00</b>

LEA : 112679002    York City SD

Printed 11/20/2020 9:11:27 AM

1400 Other Instructional Programs - Elementary / Secondary	<u>Nonspecial Education</u>	<u>Special Education</u>
500 <u>Other Purchased Services</u>		
561 Tuition To Other School Districts Within the State	309,365.00	
Total Other Purchased Services	\$309,365.00	
Total 1400 Other Instructional Programs - Elementary / Secondary	\$309,365.00	

LEA : 112679002    York City SD

Printed 11/20/2020 9:11:27 AM

1440 Alternative Regular Education Programs	<u>Nonspecial Education</u>	<u>Special Education</u>
500 <u>Other Purchased Services</u>		
561 Tuition To Other School Districts Within the State	309,365.00	
Total Other Purchased Services	\$309,365.00	
Total 1440 Alternative Regular Education Programs	\$309,365.00	

LEA : 112679002    York City SD

Printed 11/20/2020 9:11:27 AM

1441 Adjudicated / Court-Placed Programs	<u>Nonspecial Education</u>	<u>Special Education</u>
500 <u>Other Purchased Services</u>		
561 Tuition To Other School Districts Within the State	309,365.00	
Total Other Purchased Services	\$309,365.00	
Total 1441 Adjudicated / Court-Placed Programs	\$309,365.00	